

PIRPAINTI BARAHAT COAL BLOCK SUMMARY

PART A

Sr. No.	Features	Details
1. Location		
	Coal Block	Pirpainti Barahat
	Latitude	25° 7' 41" N - 25° 11' 26" N (Provisional)
	Longitude	87° 18' 51" E - 87° 21' 36" E (Provisional)
	Topo Sheet No.	G45P8
	Coalfield	Rajmahal
	Villages	Doi, Majhgain, Kamardiha, Chaura, Udhua Chak, Lakramara, Dariapur, Dhankuria, Singarpur, Parsa, Nima, Ghori, Amor, Khirondha, Khrthi, Chitrasen Bahira, Khiraundhi, Siwanpur, Jitu Chak
	Tehsil/Taluka	Meherma
	District	Godda
	State	Jharkhand
2. Connectivity with Block		
	Nearest Rail Head	Pirpainti, the nearest railway station on the Sahibganj-Burdwan loop line of Eastern Railway connects Kolkata in the east and Patna (via Kahalgaon-Bhagalpur, Kiul) in the west.
	Road	A metalled road (NH-133) passing along the eastern boundary of the block connects the area to Pirpainti town in the north and Godda town in the south which are at a distance of 12 and 48 km. respectively. This road joins Bhagalpur-Dumka/Deoghar road at Hansdiha in the south and Sahibganj/Bhagalpur road at Pirpainti in the north.
	Airport	-
3. Area		
	Geological Block Area	18.83 sq.km. (As per shape file. Refer note below)
	Forest Area	Approx. 0% (As per FSI)
	Non-Forest Area	Approx. 100%
4. Climate and Topography		
	Average Annual Rainfall	1134mm
	Temperature (Min. — Max.)	5°C-46°C
	Local Surface Drainage Channels	The main drainage of the area is controlled by the river Ganga flowing about 12km.to the north of the block. However, three seasonal tributaries of Koa nalla are flowing to the north-east of the block. The high flood level of the river Ganga recorded near village Shakipura, near Kahalgaon is 31.72m.
	Rivers	
5. Exploration		
	Status	Explored in Detail
	Exploration Agency	CMPDI
	Total Number of Boreholes with meterage	135 Boreholes, 25473.60 m

	Borehole Density	Bhs/sq.km.			
	General Dip of Seams	2° - 5° North-Easterly.			
	General Strike Direction	NW - SE in General.			
	Faults	4 Faults with maximum throw of 65m.			
6.	Coal Seams & Reserve				
	Coal Seams	Thickness Range (m)	Depth Range (m)	Geological Reserve (MT)	Grade
	Seam X	2.24-6.68	Incrop-96m		G12
	Seam IX	4.72-8.98	Incrop-120m	11.617	G12-G9
	Seam VIII	1.20-9.40	Incrop-140m	27.013	G13-G9
	Seam VII	0.40-3.50	Incrop-160m	12.021	G11-G7
	Seam VI	0.25-4.48	Incrop-170m	28.279	G17-G9
	Seam V	0.14-3.33	Incrop-190m	9.548	G16- G10
	Seam IV	0.18-4.08	Incrop-210m	23.531	G13-G8
	Seam III	0.60-4.85	Incrop-240m	45.379	G13-G11
	Seam III TOP	0.13-1.15	Incrop-170m	0.856	G16-G10
	Seam III BOT	0.11-1.29	Incrop-178m	1.376	G14-G11
	Seam II TOP	10.04-28.63	Incrop-290m	121.7	G15-G9
	Seam II BOT	1.40-34.05	Incrop-320 m	100.813	G15-G9
	Seam II	2.07-61.13	Incrop-320 m	416.43	G14-G9
Total				798.563	
7.	Surface Constraints	NA			
8.	Grade of the block	G12 (Provisional) based on weighted average grade as per data available in GR prepared for PR.			
9.	Decision Support System (DSS) Analysis	-			
10.	Eco Sensitive Zone (ESZ) Analysis	The ESZ boundary of Udawa lake is located approx. 44 km away from S-E boundary of the block.			

PART B

Sr. No.	Features	Details
1	Tentative Peak rated Capacity	25.0 Mty

Note:

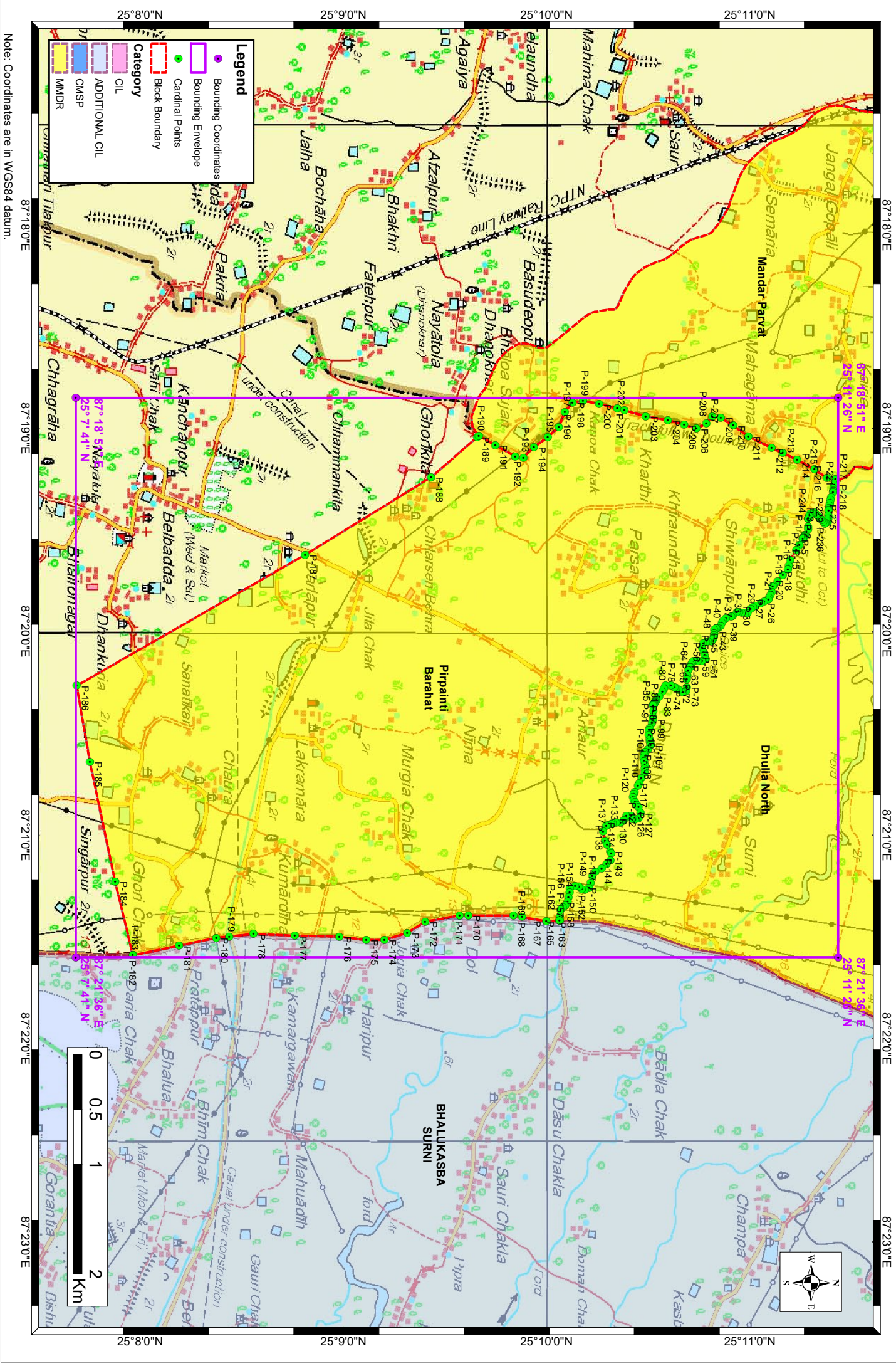
1. The above data is compiled from Geological Report, Mining Plan and the data furnished by the prior allottee in Annexure-I/II, as available. For clarifications with regard to above data, please refer aforesaid source documents.
2. The block boundary of Pirpainti Barahat coal block has been rationalized with adjacent Mandar Parvat coal block taking Bihar-Jharkhand state boundary as common boundary to make it free from administrative issues. The revised boundary and its cardinal points are given as part of this coal block summary.
3. The data is taken from geological report prepared for project report (GR for PR).

Disclaimer:

1. The analysis is done on Beta-version (Trial Version) of Decision Support System (DSS) of FSI/ MOEF.
2. The Decision Rules for various parameters of this DSS System are controlled by FSI.
3. CMPDI only runs this DSS to obtain the status of any block based on these Decision Rules.
4. The database of the Decision Rules is updated by FSI from time to time.
5. CMPDI does not own any responsibility for variation in the results which are based on the decision Rules of the FSI DSS in case of any updation of the database at FSI end.
6. ESZ analysis and tiger habitat/ corridor given here is based on the information available in public domain. Bidders are encouraged to verify this information and any other information additionally available.

Pirpainti Barahat Block, Rajmahal Coalfields

FOR INTERNAL/RESTRICTED USE ONLY



Note: Coordinates are in WGS84 datum.

25°8'0"N 25°9'0"N 25°10'0"N 25°11'0"N

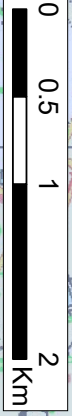
25°8'0"N 25°9'0"N 25°10'0"N 25°11'0"N

87°18'0"E 87°19'0"E 87°20'0"E 87°21'0"E 87°22'0"E 87°23'0"E

87°18'0"E 87°19'0"E 87°20'0"E 87°21'0"E 87°22'0"E 87°23'0"E

Legend

- Bounding Coordinates
 - Bounding Envelope
 - Cardinal Points
 - Block Boundary
- Category**
- CIL
 - ADDITIONAL CIL
 - CMSP
 - VMDR



Provisional Cardinal Points for Pirpainti Barahat Block

POINT NO	Longitude (WGS84)	Latitude (WGS84)
P-1	87° 19' 26.523" E	25° 11' 17.172" N
P-2	87° 19' 26.648" E	25° 11' 17.120" N
P-3	87° 19' 29.077" E	25° 11' 17.120" N
P-4	87° 19' 29.860" E	25° 11' 17.120" N
P-5	87° 19' 31.376" E	25° 11' 16.278" N
P-6	87° 19' 31.393" E	25° 11' 16.268" N
P-7	87° 19' 31.778" E	25° 11' 16.054" N
P-8	87° 19' 32.027" E	25° 11' 15.916" N
P-9	87° 19' 32.195" E	25° 11' 15.822" N
P-10	87° 19' 32.360" E	25° 11' 15.722" N
P-11	87° 19' 32.446" E	25° 11' 15.669" N
P-12	87° 19' 32.506" E	25° 11' 15.633" N
P-13	87° 19' 32.540" E	25° 11' 15.612" N
P-14	87° 19' 32.587" E	25° 11' 15.583" N
P-15	87° 19' 34.329" E	25° 11' 14.526" N
P-16	87° 19' 35.771" E	25° 11' 13.651" N
P-17	87° 19' 38.855" E	25° 11' 11.852" N
P-18	87° 19' 40.499" E	25° 11' 11.460" N
P-19	87° 19' 41.553" E	25° 11' 11.209" N
P-20	87° 19' 43.340" E	25° 11' 9.666" N
P-21	87° 19' 45.139" E	25° 11' 8.093" N
P-22	87° 19' 46.419" E	25° 11' 6.955" N
P-23	87° 19' 46.693" E	25° 11' 6.712" N
P-24	87° 19' 48.234" E	25° 11' 6.455" N
P-25	87° 19' 49.144" E	25° 11' 6.027" N
P-26	87° 19' 50.029" E	25° 11' 5.611" N
P-27	87° 19' 50.419" E	25° 11' 5.427" N
P-28	87° 19' 51.033" E	25° 11' 4.199" N
P-29	87° 19' 51.577" E	25° 11' 3.130" N
P-30	87° 19' 52.346" E	25° 11' 1.701" N
P-31	87° 19' 52.603" E	25° 11' 0.801" N
P-32	87° 19' 53.246" E	25° 11' 0.159" N
P-33	87° 19' 54.531" E	25° 10' 59.260" N
P-34	87° 19' 54.419" E	25° 10' 58.532" N
P-35	87° 19' 54.274" E	25° 10' 57.589" N
P-36	87° 19' 54.203" E	25° 10' 56.818" N
P-37	87° 19' 54.145" E	25° 10' 56.176" N
P-38	87° 19' 55.218" E	25° 10' 54.908" N
P-39	87° 19' 55.558" E	25° 10' 54.505" N
P-40	87° 19' 56.004" E	25° 10' 52.904" N
P-41	87° 19' 56.689" E	25° 10' 52.047" N
P-42	87° 19' 57.289" E	25° 10' 51.704" N
P-43	87° 19' 58.317" E	25° 10' 51.276" N
P-44	87° 19' 58.698" E	25° 10' 50.666" N
P-45	87° 19' 58.848" E	25° 10' 50.399" N
P-46	87° 19' 58.986" E	25° 10' 50.144" N
P-47	87° 19' 58.983" E	25° 10' 50.136" N

Provisional Cardinal Points for Pirpainti Barahat Block

POINT NO	Longitude (WGS84)	Latitude (WGS84)
P-48	87° 19' 59.069" E	25° 10' 49.990" N
P-49	87° 19' 59.345" E	25° 10' 49.477" N
P-50	87° 20' 0.454" E	25° 10' 49.419" N
P-51	87° 20' 0.972" E	25° 10' 49.392" N
P-52	87° 20' 1.561" E	25° 10' 49.256" N
P-53	87° 20' 2.086" E	25° 10' 49.135" N
P-54	87° 20' 2.771" E	25° 10' 48.621" N
P-55	87° 20' 2.880" E	25° 10' 47.584" N
P-56	87° 20' 2.942" E	25° 10' 46.993" N
P-57	87° 20' 3.371" E	25° 10' 46.136" N
P-58	87° 20' 4.656" E	25° 10' 45.879" N
P-59	87° 20' 5.941" E	25° 10' 46.308" N
P-60	87° 20' 6.883" E	25° 10' 46.565" N
P-61	87° 20' 8.082" E	25° 10' 46.822" N
P-62	87° 20' 8.510" E	25° 10' 45.879" N
P-63	87° 20' 8.510" E	25° 10' 44.595" N
P-64	87° 20' 8.682" E	25° 10' 43.310" N
P-65	87° 20' 9.213" E	25° 10' 42.942" N
P-66	87° 20' 9.795" E	25° 10' 42.539" N
P-67	87° 20' 10.225" E	25° 10' 42.335" N
P-68	87° 20' 10.399" E	25° 10' 42.253" N
P-69	87° 20' 10.454" E	25° 10' 42.226" N
P-70	87° 20' 11.423" E	25° 10' 41.768" N
P-71	87° 20' 12.888" E	25° 10' 41.506" N
P-72	87° 20' 13.821" E	25° 10' 41.339" N
P-73	87° 20' 16.305" E	25° 10' 41.339" N
P-74	87° 20' 17.419" E	25° 10' 41.168" N
P-75	87° 20' 17.847" E	25° 10' 40.140" N
P-76	87° 20' 17.110" E	25° 10' 38.981" N
P-77	87° 20' 16.648" E	25° 10' 38.256" N
P-78	87° 20' 16.382" E	25° 10' 37.751" N
P-79	87° 20' 15.791" E	25° 10' 36.628" N
P-80	87° 20' 15.791" E	25° 10' 35.001" N
P-81	87° 20' 16.704" E	25° 10' 34.586" N
P-82	87° 20' 17.676" E	25° 10' 34.144" N
P-83	87° 20' 19.218" E	25° 10' 33.202" N
P-84	87° 20' 20.192" E	25° 10' 32.400" N
P-85	87° 20' 20.431" E	25° 10' 32.202" N
P-86	87° 20' 20.640" E	25° 10' 32.048" N
P-87	87° 20' 20.793" E	25° 10' 31.935" N
P-88	87° 20' 20.928" E	25° 10' 31.835" N
P-89	87° 20' 21.058" E	25° 10' 31.739" N
P-90	87° 20' 21.143" E	25° 10' 31.677" N
P-91	87° 20' 21.183" E	25° 10' 31.646" N
P-92	87° 20' 21.273" E	25° 10' 31.580" N
P-93	87° 20' 21.368" E	25° 10' 31.510" N
P-94	87° 20' 21.410" E	25° 10' 31.479" N

Provisional Cardinal Points for Pirpainti Barahat Block

POINT NO	Longitude (WGS84)	Latitude (WGS84)
P-95	87° 20' 21.449" E	25° 10' 31.453" N
P-96	87° 20' 21.614" E	25° 10' 31.329" N
P-97	87° 20' 23.310" E	25° 10' 31.431" N
P-98	87° 20' 24.960" E	25° 10' 31.396" N
P-99	87° 20' 25.725" E	25° 10' 31.380" N
P-100	87° 20' 26.907" E	25° 10' 31.020" N
P-101	87° 20' 28.440" E	25° 10' 30.391" N
P-102	87° 20' 28.912" E	25° 10' 30.198" N
P-103	87° 20' 30.454" E	25° 10' 30.095" N
P-104	87° 20' 31.707" E	25° 10' 30.332" N
P-105	87° 20' 32.355" E	25° 10' 30.455" N
P-106	87° 20' 33.046" E	25° 10' 30.619" N
P-107	87° 20' 33.435" E	25° 10' 30.712" N
P-108	87° 20' 34.720" E	25° 10' 29.889" N
P-109	87° 20' 35.336" E	25° 10' 28.913" N
P-110	87° 20' 35.867" E	25° 10' 28.816" N
P-111	87° 20' 36.391" E	25° 10' 28.721" N
P-112	87° 20' 37.032" E	25° 10' 28.605" N
P-113	87° 20' 38.207" E	25° 10' 28.765" N
P-114	87° 20' 39.294" E	25° 10' 28.913" N
P-115	87° 20' 40.501" E	25° 10' 28.858" N
P-116	87° 20' 41.534" E	25° 10' 28.810" N
P-117	87° 20' 43.161" E	25° 10' 27.954" N
P-118	87° 20' 44.573" E	25° 10' 27.302" N
P-119	87° 20' 45.389" E	25° 10' 26.926" N
P-120	87° 20' 47.273" E	25° 10' 25.898" N
P-121	87° 20' 47.883" E	25° 10' 25.682" N
P-122	87° 20' 48.729" E	25° 10' 25.384" N
P-123	87° 20' 49.586" E	25° 10' 25.641" N
P-124	87° 20' 50.279" E	25° 10' 26.112" N
P-125	87° 20' 51.089" E	25° 10' 26.663" N
P-126	87° 20' 51.728" E	25° 10' 27.097" N
P-127	87° 20' 53.355" E	25° 10' 27.697" N
P-128	87° 20' 55.068" E	25° 10' 27.097" N
P-129	87° 20' 55.497" E	25° 10' 25.983" N
P-130	87° 20' 55.154" E	25° 10' 25.212" N
P-131	87° 20' 54.297" E	25° 10' 24.870" N
P-132	87° 20' 54.212" E	25° 10' 23.499" N
P-133	87° 20' 55.582" E	25° 10' 22.728" N
P-134	87° 20' 56.268" E	25° 10' 21.700" N
P-135	87° 20' 56.353" E	25° 10' 20.501" N
P-136	87° 20' 56.542" E	25° 10' 19.433" N
P-137	87° 20' 56.610" E	25° 10' 19.045" N
P-138	87° 20' 57.036" E	25° 10' 18.087" N
P-139	87° 20' 57.295" E	25° 10' 17.503" N
P-140	87° 20' 58.837" E	25° 10' 16.646" N
P-141	87° 21' 1.664" E	25° 10' 17.246" N

Provisional Cardinal Points for Pirpainti Barahat Block

POINT NO	Longitude (WGS84)	Latitude (WGS84)
P-142	87° 21' 2.744" E	25° 10' 17.786" N
P-143	87° 21' 4.801" E	25° 10' 18.755" N
P-144	87° 21' 5.433" E	25° 10' 19.045" N
P-145	87° 21' 7.403" E	25° 10' 18.788" N
P-146	87° 21' 8.431" E	25° 10' 17.589" N
P-147	87° 21' 9.802" E	25° 10' 16.218" N
P-148	87° 21' 10.744" E	25° 10' 14.333" N
P-149	87° 21' 12.055" E	25° 10' 13.434" N
P-150	87° 21' 13.956" E	25° 10' 12.920" N
P-151	87° 21' 15.447" E	25° 10' 12.560" N
P-152	87° 21' 16.167" E	25° 10' 11.275" N
P-153	87° 21' 16.012" E	25° 10' 10.350" N
P-154	87° 21' 15.241" E	25° 10' 9.528" N
P-155	87° 21' 14.984" E	25° 10' 8.294" N
P-156	87° 21' 15.653" E	25° 10' 6.855" N
P-157	87° 21' 16.937" E	25° 10' 6.753" N
P-158	87° 21' 18.222" E	25° 10' 6.444" N
P-159	87° 21' 19.610" E	25° 10' 6.187" N
P-160	87° 21' 20.638" E	25° 10' 5.519" N
P-161	87° 21' 21.358" E	25° 10' 4.748" N
P-162	87° 21' 21.974" E	25° 10' 4.029" N
P-163	87° 21' 24.133" E	25° 10' 3.823" N
P-164	87° 21' 25.221" E	25° 10' 3.935" N
P-165	87° 21' 25.217" E	25° 10' 3.760" N
P-166	87° 21' 25.217" E	25° 10' 3.753" N
P-167	87° 21' 25.356" E	25° 9' 59.845" N
P-168	87° 21' 24.108" E	25° 9' 52.667" N
P-169	87° 21' 23.674" E	25° 9' 50.172" N
P-170	87° 21' 23.635" E	25° 9' 36.872" N
P-171	87° 21' 23.628" E	25° 9' 34.258" N
P-172	87° 21' 25.488" E	25° 9' 24.147" N
P-173	87° 21' 28.781" E	25° 9' 18.763" N
P-174	87° 21' 30.887" E	25° 9' 12.091" N
P-175	87° 21' 30.872" E	25° 9' 6.715" N
P-176	87° 21' 29.903" E	25° 8' 58.761" N
P-177	87° 21' 29.629" E	25° 8' 45.644" N
P-178	87° 21' 29.121" E	25° 8' 33.387" N
P-179	87° 21' 29.868" E	25° 8' 26.251" N
P-180	87° 21' 30.270" E	25° 8' 22.417" N
P-181	87° 21' 32.600" E	25° 8' 11.444" N
P-182	87° 21' 35.395" E	25° 7' 57.889" N
P-183	87° 21' 35.395" E	25° 7' 57.846" N
P-184	87° 21' 13.595" E	25° 7' 52.593" N
P-185	87° 20' 38.389" E	25° 7' 45.140" N
P-186	87° 20' 15.884" E	25° 7' 41.273" N
P-187	87° 19' 37.249" E	25° 8' 48.657" N
P-188	87° 19' 14.382" E	25° 9' 25.867" N

Provisional Cardinal Points for Pirpainti Barahat Block

POINT NO	Longitude (WGS84)	Latitude (WGS84)
P-189	87° 19' 2.524" E	25° 9' 39.494" N
P-190	87° 19' 2.094" E	25° 9' 39.987" N
P-191	87° 19' 4.990" E	25° 9' 44.809" N
P-192	87° 19' 8.218" E	25° 9' 50.651" N
P-193	87° 19' 8.603" E	25° 9' 53.059" N
P-194	87° 19' 5.586" E	25° 9' 56.162" N
P-195	87° 19' 2.572" E	25° 10' 0.297" N
P-196	87° 18' 59.556" E	25° 10' 3.573" N
P-197	87° 18' 55.213" E	25° 10' 5.302" N
P-198	87° 18' 52.383" E	25° 10' 7.545" N
P-199	87° 18' 51.824" E	25° 10' 10.643" N
P-200	87° 18' 52.781" E	25° 10' 15.458" N
P-201	87° 18' 54.118" E	25° 10' 20.788" N
P-202	87° 18' 54.686" E	25° 10' 22.875" N
P-203	87° 18' 56.409" E	25° 10' 29.213" N
P-204	87° 18' 57.560" E	25° 10' 35.748" N
P-205	87° 18' 58.895" E	25° 10' 40.562" N
P-206	87° 19' 0.039" E	25° 10' 44.172" N
P-207	87° 18' 58.534" E	25° 10' 47.100" N
P-208	87° 18' 56.459" E	25° 10' 48.825" N
P-209	87° 18' 56.844" E	25° 10' 51.405" N
P-210	87° 18' 59.122" E	25° 10' 55.013" N
P-211	87° 19' 2.347" E	25° 10' 59.479" N
P-212	87° 19' 5.768" E	25° 11' 6.353" N
P-213	87° 19' 7.247" E	25° 11' 9.620" N
P-214	87° 19' 9.191" E	25° 11' 13.915" N
P-215	87° 19' 12.055" E	25° 11' 18.980" N
P-216	87° 19' 14.697" E	25° 11' 22.677" N
P-217	87° 19' 14.941" E	25° 11' 25.158" N
P-218	87° 19' 16.594" E	25° 11' 24.890" N
P-219	87° 19' 17.811" E	25° 11' 24.693" N
P-220	87° 19' 18.286" E	25° 11' 24.616" N
P-221	87° 19' 18.500" E	25° 11' 24.581" N
P-222	87° 19' 18.553" E	25° 11' 24.572" N
P-223	87° 19' 18.775" E	25° 11' 24.493" N
P-224	87° 19' 20.352" E	25° 11' 23.930" N
P-225	87° 19' 21.003" E	25° 11' 23.800" N
P-226	87° 19' 21.947" E	25° 11' 23.611" N
P-227	87° 19' 22.730" E	25° 11' 23.454" N
P-228	87° 19' 23.407" E	25° 11' 23.319" N
P-229	87° 19' 23.976" E	25° 11' 23.205" N
P-230	87° 19' 24.207" E	25° 11' 23.159" N
P-231	87° 19' 25.598" E	25° 11' 23.105" N
P-232	87° 19' 26.675" E	25° 11' 23.064" N
P-233	87° 19' 27.547" E	25° 11' 23.030" N
P-234	87° 19' 27.948" E	25° 11' 22.330" N
P-235	87° 19' 28.061" E	25° 11' 22.131" N

Provisional Cardinal Points for Pirpainti Barahat Block

POINT NO	Longitude (WGS84)	Latitude (WGS84)
P-236	87° 19' 27.536" E	25° 11' 21.635" N
P-237	87° 19' 27.100" E	25° 11' 21.223" N
P-238	87° 19' 26.581" E	25° 11' 20.732" N
P-239	87° 19' 26.116" E	25° 11' 20.293" N
P-240	87° 19' 25.749" E	25° 11' 19.947" N
P-241	87° 19' 25.244" E	25° 11' 19.505" N
P-242	87° 19' 24.721" E	25° 11' 19.047" N
P-243	87° 19' 24.915" E	25° 11' 18.400" N
P-244	87° 19' 24.992" E	25° 11' 18.143" N
P-245	87° 19' 25.106" E	25° 11' 17.762" N
P-246	87° 19' 25.876" E	25° 11' 17.442" N