

Phuljhari (East & West) Coal Block Summary

PART A

Sl. No.	Features	Details
1.	Location	
	Coal Block	Phuljhari (East & West) Block,
	Latitude	20° 58' 51" N - 21° 01' 00" N (Provisional)
	Longitude	84° 54' 20" E - 84° 56' 27" E ((Provisional)
	Topo Sheet No.	F45M16 & F45S13 on R.F. 1:50000
	Coalfield	Talcher Coalfield
	Villages	Kosala and Simlisahi (As per Survey of India Toposheet)
	Tehsil/Taluka	Chhendipada
	District	Angul (Odisha)
	State	Odisha
2.	Connectivity with Block	
	Nearest Rail Head	Nearest railway station is Angul (Bhubaneshwar-Sambalpur line) situated at a distance of 30km from northern boundary of the block.
	Road	Nearest town connected by road is Angul, which is 30km away from block.
	Airport	Nearest airport is Biju Patnaik Airport and is located at about 175 km from the block.
3.	Area	
	Geological Block Area	9.44 km ² (As per shape file. Refer note below)
	Forest Area	13% (Approx.)
	Non-Forest Area	87% (Approx.)
4.	Climate and Topography	
	Average Annual Rainfall	743.80-1550.18mm
	Temperature (Min. - Max.)	Summer: 13.1°C to 43.1°C (during March to May). Winter: 10.8° C to 35.7°C (From January to February).
	Local Surface Drainage Channels	The main drainage in the block is provided by the meandering Singhara Jhor, flowing along the southern boundary of the block from west to east. Ponds and dug wells are common in this block which are utilized for irrigation and drinking purpose.
	Rivers	Singhara Jhor
5.	Exploration	
	Status	Explored
	Exploration Agency	CMPDI
	Total Number of Boreholes with meterage	46 (GSI: 4, CMPDI: 25, MAPL:17), 22388.55m (GSI: 2055.1m, CMPDI: 9948m, MAPL: 10385.45m)
	Borehole Density	5 Bh/km ²
	General Dip of Seams	Generally 6° to 7° with exception towards north.

	General Strike Direction	Generally ESE - WNW.			
6.	Coal Seams & Reserve (Proved + Indicated)				
	Coal Seams	Thickness Range (m)	Depth Range (m)	Geological Reserve (Mt)	Grade
	XI TOP	6.3-11.79	116.54-298.46	22.614	G12-G17
	XI BOT	1.16-6.51	119.14-306.79	6.494	G12-G17
	XI	5.96-17.73	61.25-335.11	191.576	G12-G17
	X	2.06-10.54	72.30-354.24	96.988	G12-G17
	IX	22.27-29.72	136.72-383.87	386.231	G11-G15
	VIII TOP	6.79-8.09	325.59-398.97	38.307	G10-G13
	VIII BOT	8.4-16.4	336.15-412.48	56.975	G11-G14
	VIII	8.45-30	158-354	210.377	G12-G15
	VII TOP	1.44-8.99	164-412.16	52.943	G10-G16
	VII BOT	0.91-7.74	171.2-424.1	51.181	G10-G17
	VII	5.74-15.77	246.15-426.01	57.155	G11-G16
	VI	0.35-7.5	183.35-434.1	34.670	G12-G16
	V TOP	0.97-7.5	194-442.76	28.537	G11-G17
	V BOT	1.47-11.82	205.7-455.35	49.180	G13-G17
	V	3.9-15.4	212-380.52	68.641	G14-G17
	IV	0.85-8.83	213.37-466.9	85.578	G12-G17
	LOCAL 3	0.35-3.08	231.06-477.3	20.530	G9-G16
	III TOP	1.14-12.9	231.9-503.37	111.758	G9-G16
	III MID	0.46-13.2	250.05-508.69	87.092	G9-G16
	III BOT	8.23-21.41	272.35-542.98	233.409	G10-G14
	II C	0.35-7.81	292.45-558.42	34.288	G9-G17
	II B	0.4-6.6	295.5-569.22	62.384	G11-G17
	II A	0.5-14.03	314.5-583.7	88.306	G10-G15
	LOCAL 2	0.3-3.66	327.95-586.97	33.590	G11-G15
	LOCAL 1	0.34-4.9	342.65-588.87	21.984	G10-G14
	I A	0.32-2.35	457.23-640.43	13.756	G7-G14
	I B	0.52-2.29	408.13-646.46		
	I C	0.46-1.06	515.57-708.71		
	I D	1.91-7.32	465.31-713.31	52.410	G5-G11
	I E	0.5-2.63	470.21-724.69	13.883	G7-G12
	I F	0.46-1.06	476.79-733.4		
	I G	0.4-2.88	514.13-743.81		
			Total	2210.837	
7.	Surface Constraints	-			
8.	Grade of the block	G13 (Provisional) based on weighted average grade as per data available in GR.			
9.	Decision Support System (DSS) Analysis	Wildlife info: The polygon touches Wildlife Habitat(s)- Sloth Bear, Dhole			
10.	Eco Sensitive Zone (ESZ)	The ESZ of Mahanadi Elephant region is approx. 11 km away from eastern block boundary. Also, tiger corridor between TRPA of Simlipal-Satkosia is 18 km away in the northern direction & 11 km in the eastern direction from the block.			

PART B

Sr.No.	Features	Details
1.	Tentative Peak Rated Mine Capacity	10 MTPA

Note:

1. The boundaries of the blocks have been taken from GR after conversion to WGS84 system by feature matching. However, the boundary and the area of the combined block may be changed after DGPS survey on the ground.

Disclaimer:

1. The analysis is done on Beta-version (Trial Version) of Decision Support System (DSS) of FSI / MOEF.
2. The Decision Rules for various parameters of this DSS System are controlled by FSI.
3. CMPDI only runs this DSS to obtain the status of any block based on these Decision Rules.
4. The database of the Decision Rules is updated by FSI from time to time.
5. CMPDI does not own any responsibility for variation in the results which are based on the Decision Rules of the FSI DSS in case of any updation of the database at FSI end.
6. ESZ analysis and tiger habitat/ corridor given here is based on the information available in public domain. Bidders are encouraged to verify this information and any other information additionally available.

84°54'0"E

84°55'0"E

84°56'0"E

84°57'0"E

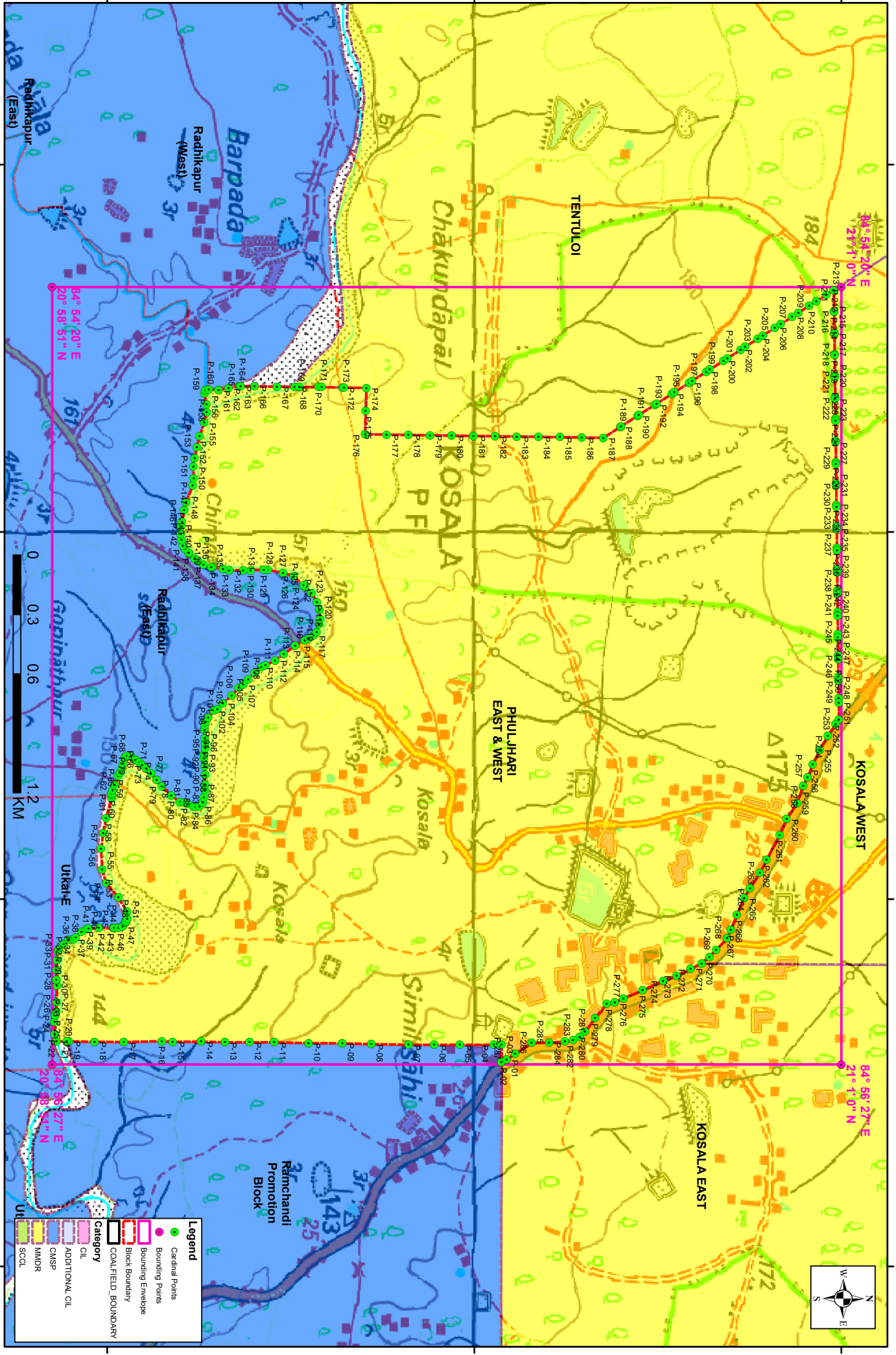
21°10'N

21°00'N

20°59'0"N

Phulhari East & West Block, Talcher Coalfield

FOR INTERNAL/RESTRICTED USE ONLY



Legend

- Cardinal Points
- Bounding Points
- Bounding Envelope
- Block Boundary
- COALFIELD BOUNDARY

Category

- OIL
- ADDITIONAL OIL
- CANSR
- MIMDR
- SCDL

Note: The map is prepared on WGS84 coordinate system.

Provisional Cardinal Points for PHULHARI EAST & WEST Block

POINT NO	Longitude (WGS84)	Latitude (WGS84)
P-1	84° 56' 26.196" E	21° 0' 5.251" N
P-2	84° 56' 26.631" E	21° 0' 4.448" N
P-3	84° 56' 23.798" E	21° 0' 4.456" N
P-4	84° 56' 23.792" E	21° 0' 3.205" N
P-5	84° 56' 23.771" E	20° 59' 57.644" N
P-6	84° 56' 23.776" E	20° 59' 53.454" N
P-7	84° 56' 23.781" E	20° 59' 49.264" N
P-8	84° 56' 23.675" E	20° 59' 43.165" N
P-9	84° 56' 23.539" E	20° 59' 38.430" N
P-10	84° 56' 23.508" E	20° 59' 32.934" N
P-11	84° 56' 23.381" E	20° 59' 27.309" N
P-12	84° 56' 23.376" E	20° 59' 23.284" N
P-13	84° 56' 23.370" E	20° 59' 19.258" N
P-14	84° 56' 23.267" E	20° 59' 15.348" N
P-15	84° 56' 23.301" E	20° 59' 10.707" N
P-16	84° 56' 23.185" E	20° 59' 8.946" N
P-17	84° 56' 23.343" E	20° 59' 2.724" N
P-18	84° 56' 23.291" E	20° 58' 57.940" N
P-19	84° 56' 23.213" E	20° 58' 53.709" N
P-20	84° 56' 23.216" E	20° 58' 53.402" N
P-21	84° 56' 23.229" E	20° 58' 51.719" N
P-22	84° 56' 22.075" E	20° 58' 51.405" N
P-23	84° 56' 20.058" E	20° 58' 51.359" N
P-24	84° 56' 18.947" E	20° 58' 51.477" N
P-25	84° 56' 18.943" E	20° 58' 51.478" N
P-26	84° 56' 18.495" E	20° 58' 51.675" N
P-27	84° 56' 16.847" E	20° 58' 51.728" N
P-28	84° 56' 14.153" E	20° 58' 51.763" N
P-29	84° 56' 13.220" E	20° 58' 51.671" N
P-30	84° 56' 13.118" E	20° 58' 51.683" N
P-31	84° 56' 11.596" E	20° 58' 51.702" N
P-32	84° 56' 9.971" E	20° 58' 51.777" N
P-33	84° 56' 8.532" E	20° 58' 51.911" N
P-34	84° 56' 8.250" E	20° 58' 52.069" N
P-35	84° 56' 7.346" E	20° 58' 52.899" N
P-36	84° 56' 6.587" E	20° 58' 53.705" N
P-37	84° 56' 6.584" E	20° 58' 54.414" N
P-38	84° 56' 6.313" E	20° 58' 54.867" N
P-39	84° 56' 5.288" E	20° 58' 55.798" N
P-40	84° 56' 4.908" E	20° 58' 56.560" N
P-41	84° 56' 4.803" E	20° 58' 56.955" N
P-42	84° 56' 4.712" E	20° 58' 58.641" N
P-43	84° 56' 4.706" E	20° 59' 1.006" N
P-44	84° 56' 4.674" E	20° 59' 1.053" N
P-45	84° 56' 4.675" E	20° 59' 1.120" N
P-46	84° 56' 4.674" E	20° 59' 1.869" N
P-47	84° 56' 4.506" E	20° 59' 2.521" N

Provisional Cardinal Points for PHULHARI EAST & WEST Block

POINT NO	Longitude (WGS84)	Latitude (WGS84)
P-48	84° 56' 3.863" E	20° 59' 3.006" N
P-49	84° 56' 3.664" E	20° 59' 2.980" N
P-50	84° 56' 3.608" E	20° 59' 3.111" N
P-51	84° 56' 3.191" E	20° 59' 3.287" N
P-52	84° 56' 1.970" E	20° 59' 3.242" N
P-53	84° 55' 59.696" E	20° 59' 1.812" N
P-54	84° 55' 57.357" E	20° 58' 59.852" N
P-55	84° 55' 55.149" E	20° 58' 59.176" N
P-56	84° 55' 51.737" E	20° 58' 58.982" N
P-57	84° 55' 49.190" E	20° 58' 59.343" N
P-58	84° 55' 46.802" E	20° 58' 59.819" N
P-59	84° 55' 43.448" E	20° 59' 0.678" N
P-60	84° 55' 42.937" E	20° 59' 0.809" N
P-61	84° 55' 42.782" E	20° 59' 0.704" N
P-62	84° 55' 42.165" E	20° 59' 0.889" N
P-63	84° 55' 41.398" E	20° 59' 1.216" N
P-64	84° 55' 39.867" E	20° 59' 1.784" N
P-65	84° 55' 39.388" E	20° 59' 2.110" N
P-66	84° 55' 38.594" E	20° 59' 2.424" N
P-67	84° 55' 37.825" E	20° 59' 2.584" N
P-68	84° 55' 36.824" E	20° 59' 2.899" N
P-69	84° 55' 36.607" E	20° 59' 3.262" N
P-70	84° 55' 36.748" E	20° 59' 3.880" N
P-71	84° 55' 37.226" E	20° 59' 4.579" N
P-72	84° 55' 37.234" E	20° 59' 4.606" N
P-73	84° 55' 37.278" E	20° 59' 4.654" N
P-74	84° 55' 37.637" E	20° 59' 5.282" N
P-75	84° 55' 38.075" E	20° 59' 5.688" N
P-76	84° 55' 38.643" E	20° 59' 6.356" N
P-77	84° 55' 39.473" E	20° 59' 7.164" N
P-78	84° 55' 40.565" E	20° 59' 8.073" N
P-79	84° 55' 41.546" E	20° 59' 8.945" N
P-80	84° 55' 43.095" E	20° 59' 10.484" N
P-81	84° 55' 44.126" E	20° 59' 11.901" N
P-82	84° 55' 44.259" E	20° 59' 12.605" N
P-83	84° 55' 44.464" E	20° 59' 13.120" N
P-84	84° 55' 44.837" E	20° 59' 14.047" N
P-85	84° 55' 44.932" E	20° 59' 14.494" N
P-86	84° 55' 44.844" E	20° 59' 15.114" N
P-87	84° 55' 44.188" E	20° 59' 15.617" N
P-88	84° 55' 43.401" E	20° 59' 15.776" N
P-89	84° 55' 42.157" E	20° 59' 15.990" N
P-90	84° 55' 41.277" E	20° 59' 15.978" N
P-91	84° 55' 39.702" E	20° 59' 15.988" N
P-92	84° 55' 38.318" E	20° 59' 15.914" N
P-93	84° 55' 37.039" E	20° 59' 15.806" N
P-94	84° 55' 36.298" E	20° 59' 15.862" N

Provisional Cardinal Points for PHULHARI EAST & WEST Block

POINT NO	Longitude (WGS84)	Latitude (WGS84)
P-95	84° 55' 35.282" E	20° 59' 16.010" N
P-96	84° 55' 34.444" E	20° 59' 16.053" N
P-97	84° 55' 33.770" E	20° 59' 15.967" N
P-98	84° 55' 32.396" E	20° 59' 15.923" N
P-99	84° 55' 31.640" E	20° 59' 15.941" N
P-100	84° 55' 31.050" E	20° 59' 16.112" N
P-101	84° 55' 30.334" E	20° 59' 16.504" N
P-102	84° 55' 29.227" E	20° 59' 17.426" N
P-103	84° 55' 28.956" E	20° 59' 18.022" N
P-104	84° 55' 27.959" E	20° 59' 18.931" N
P-105	84° 55' 26.746" E	20° 59' 20.370" N
P-106	84° 55' 25.517" E	20° 59' 21.462" N
P-107	84° 55' 24.999" E	20° 59' 22.253" N
P-108	84° 55' 24.107" E	20° 59' 23.050" N
P-109	84° 55' 22.996" E	20° 59' 24.106" N
P-110	84° 55' 22.106" E	20° 59' 25.213" N
P-111	84° 55' 21.799" E	20° 59' 25.886" N
P-112	84° 55' 20.985" E	20° 59' 27.456" N
P-113	84° 55' 20.005" E	20° 59' 28.882" N
P-114	84° 55' 18.552" E	20° 59' 30.718" N
P-115	84° 55' 17.784" E	20° 59' 32.271" N
P-116	84° 55' 17.445" E	20° 59' 32.962" N
P-117	84° 55' 16.946" E	20° 59' 33.760" N
P-118	84° 55' 16.354" E	20° 59' 34.237" N
P-119	84° 55' 15.120" E	20° 59' 34.631" N
P-120	84° 55' 14.189" E	20° 59' 34.802" N
P-121	84° 55' 12.796" E	20° 59' 34.707" N
P-122	84° 55' 11.437" E	20° 59' 34.267" N
P-123	84° 55' 9.966" E	20° 59' 33.381" N
P-124	84° 55' 9.069" E	20° 59' 32.324" N
P-125	84° 55' 8.759" E	20° 59' 32.088" N
P-126	84° 55' 7.235" E	20° 59' 30.507" N
P-127	84° 55' 6.673" E	20° 59' 28.755" N
P-128	84° 55' 6.201" E	20° 59' 26.231" N
P-129	84° 55' 6.173" E	20° 59' 25.608" N
P-130	84° 55' 6.228" E	20° 59' 23.461" N
P-131	84° 55' 6.266" E	20° 59' 22.256" N
P-132	84° 55' 6.273" E	20° 59' 19.955" N
P-133	84° 55' 6.060" E	20° 59' 18.945" N
P-134	84° 55' 5.792" E	20° 59' 17.214" N
P-135	84° 55' 5.732" E	20° 59' 17.038" N
P-136	84° 55' 5.319" E	20° 59' 15.756" N
P-137	84° 55' 4.810" E	20° 59' 14.829" N
P-138	84° 55' 4.371" E	20° 59' 14.265" N
P-139	84° 55' 3.551" E	20° 59' 13.401" N
P-140	84° 55' 3.444" E	20° 59' 13.327" N
P-141	84° 55' 2.837" E	20° 59' 12.730" N

Provisional Cardinal Points for PHULHARI EAST & WEST Block

POINT NO	Longitude (WGS84)	Latitude (WGS84)
P-142	84° 55' 2.239" E	20° 59' 12.368" N
P-143	84° 55' 1.345" E	20° 59' 12.136" N
P-144	84° 55' 0.313" E	20° 59' 12.013" N
P-145	84° 54' 59.100" E	20° 59' 12.064" N
P-146	84° 54' 58.368" E	20° 59' 12.197" N
P-147	84° 54' 56.424" E	20° 59' 12.595" N
P-148	84° 54' 55.124" E	20° 59' 12.913" N
P-149	84° 54' 52.456" E	20° 59' 13.961" N
P-150	84° 54' 51.248" E	20° 59' 14.140" N
P-151	84° 54' 49.305" E	20° 59' 14.083" N
P-152	84° 54' 47.951" E	20° 59' 14.297" N
P-153	84° 54' 46.121" E	20° 59' 14.652" N
P-154	84° 54' 44.365" E	20° 59' 15.109" N
P-155	84° 54' 42.172" E	20° 59' 15.845" N
P-156	84° 54' 40.489" E	20° 59' 16.268" N
P-157	84° 54' 39.133" E	20° 59' 16.241" N
P-158	84° 54' 37.408" E	20° 59' 15.907" N
P-159	84° 54' 36.860" E	20° 59' 16.048" N
P-160	84° 54' 36.708" E	20° 59' 16.588" N
P-161	84° 54' 36.847" E	20° 59' 18.168" N
P-162	84° 54' 36.531" E	20° 59' 19.824" N
P-163	84° 54' 36.184" E	20° 59' 21.633" N
P-164	84° 54' 36.150" E	20° 59' 21.729" N
P-165	84° 54' 36.150" E	20° 59' 21.807" N
P-166	84° 54' 36.195" E	20° 59' 24.086" N
P-167	84° 54' 36.250" E	20° 59' 27.745" N
P-168	84° 54' 36.293" E	20° 59' 30.650" N
P-169	84° 54' 36.305" E	20° 59' 31.404" N
P-170	84° 54' 36.352" E	20° 59' 34.560" N
P-171	84° 54' 36.360" E	20° 59' 35.062" N
P-172	84° 54' 36.411" E	20° 59' 38.470" N
P-173	84° 54' 36.415" E	20° 59' 38.721" N
P-174	84° 54' 36.470" E	20° 59' 42.380" N
P-175	84° 54' 40.261" E	20° 59' 42.268" N
P-176	84° 54' 44.053" E	20° 59' 42.156" N
P-177	84° 54' 44.105" E	20° 59' 45.697" N
P-178	84° 54' 44.156" E	20° 59' 49.237" N
P-179	84° 54' 44.208" E	20° 59' 52.778" N
P-180	84° 54' 44.260" E	20° 59' 56.318" N
P-181	84° 54' 44.312" E	20° 59' 59.859" N
P-182	84° 54' 44.363" E	21° 0' 3.399" N
P-183	84° 54' 44.415" E	21° 0' 6.940" N
P-184	84° 54' 44.467" E	21° 0' 10.480" N
P-185	84° 54' 44.519" E	21° 0' 14.021" N
P-186	84° 54' 44.571" E	21° 0' 17.562" N
P-187	84° 54' 44.622" E	21° 0' 21.102" N
P-188	84° 54' 42.826" E	21° 0' 23.906" N

Provisional Cardinal Points for PHULHARI EAST & WEST Block

POINT NO	Longitude (WGS84)	Latitude (WGS84)
P-189	84° 54' 42.765" E	21° 0' 24.000" N
P-190	84° 54' 41.030" E	21° 0' 26.709" N
P-191	84° 54' 40.908" E	21° 0' 26.899" N
P-192	84° 54' 39.233" E	21° 0' 29.513" N
P-193	84° 54' 39.051" E	21° 0' 29.797" N
P-194	84° 54' 37.437" E	21° 0' 32.317" N
P-195	84° 54' 37.194" E	21° 0' 32.696" N
P-196	84° 54' 35.640" E	21° 0' 35.121" N
P-197	84° 54' 35.337" E	21° 0' 35.594" N
P-198	84° 54' 33.844" E	21° 0' 37.924" N
P-199	84° 54' 33.480" E	21° 0' 38.492" N
P-200	84° 54' 32.048" E	21° 0' 40.728" N
P-201	84° 54' 31.623" E	21° 0' 41.391" N
P-202	84° 54' 30.251" E	21° 0' 43.532" N
P-203	84° 54' 29.766" E	21° 0' 44.289" N
P-204	84° 54' 28.455" E	21° 0' 46.335" N
P-205	84° 54' 27.909" E	21° 0' 47.187" N
P-206	84° 54' 26.658" E	21° 0' 49.139" N
P-207	84° 54' 26.051" E	21° 0' 50.086" N
P-208	84° 54' 24.862" E	21° 0' 51.943" N
P-209	84° 54' 24.194" E	21° 0' 52.984" N
P-210	84° 54' 23.065" E	21° 0' 54.746" N
P-211	84° 54' 22.337" E	21° 0' 55.882" N
P-212	84° 54' 21.268" E	21° 0' 57.550" N
P-213	84° 54' 20.480" E	21° 0' 58.781" N
P-214	84° 54' 23.990" E	21° 0' 58.822" N
P-215	84° 54' 24.028" E	21° 0' 58.822" N
P-216	84° 54' 27.499" E	21° 0' 58.862" N
P-217	84° 54' 27.576" E	21° 0' 58.863" N
P-218	84° 54' 31.009" E	21° 0' 58.903" N
P-219	84° 54' 31.124" E	21° 0' 58.905" N
P-220	84° 54' 34.519" E	21° 0' 58.944" N
P-221	84° 54' 34.671" E	21° 0' 58.946" N
P-222	84° 54' 38.028" E	21° 0' 58.985" N
P-223	84° 54' 38.219" E	21° 0' 58.987" N
P-224	84° 54' 41.538" E	21° 0' 59.025" N
P-225	84° 54' 41.767" E	21° 0' 59.028" N
P-226	84° 54' 45.048" E	21° 0' 59.066" N
P-227	84° 54' 45.315" E	21° 0' 59.069" N
P-228	84° 54' 48.558" E	21° 0' 59.107" N
P-229	84° 54' 48.863" E	21° 0' 59.110" N
P-230	84° 54' 52.067" E	21° 0' 59.147" N
P-231	84° 54' 52.411" E	21° 0' 59.151" N
P-232	84° 54' 55.577" E	21° 0' 59.188" N
P-233	84° 54' 55.959" E	21° 0' 59.193" N
P-234	84° 54' 59.087" E	21° 0' 59.229" N
P-235	84° 54' 59.507" E	21° 0' 59.234" N

Provisional Cardinal Points for PHULHARI EAST & WEST Block

POINT NO	Longitude (WGS84)	Latitude (WGS84)
P-236	84° 55' 2.597" E	21° 0' 59.269" N
P-237	84° 55' 3.055" E	21° 0' 59.275" N
P-238	84° 55' 6.106" E	21° 0' 59.310" N
P-239	84° 55' 6.603" E	21° 0' 59.316" N
P-240	84° 55' 9.616" E	21° 0' 59.350" N
P-241	84° 55' 10.151" E	21° 0' 59.357" N
P-242	84° 55' 13.126" E	21° 0' 59.391" N
P-243	84° 55' 13.698" E	21° 0' 59.398" N
P-244	84° 55' 16.636" E	21° 0' 59.431" N
P-245	84° 55' 17.246" E	21° 0' 59.438" N
P-246	84° 55' 20.145" E	21° 0' 59.472" N
P-247	84° 55' 20.794" E	21° 0' 59.479" N
P-248	84° 55' 23.655" E	21° 0' 59.512" N
P-249	84° 55' 24.342" E	21° 0' 59.520" N
P-250	84° 55' 27.165" E	21° 0' 59.553" N
P-251	84° 55' 27.890" E	21° 0' 59.561" N
P-252	84° 55' 30.675" E	21° 0' 59.593" N
P-253	84° 55' 31.442" E	21° 0' 59.056" N
P-254	84° 55' 33.266" E	21° 0' 57.798" N
P-255	84° 55' 35.639" E	21° 0' 56.450" N
P-256	84° 55' 38.014" E	21° 0' 55.317" N
P-257	84° 55' 40.070" E	21° 0' 54.488" N
P-258	84° 55' 41.439" E	21° 0' 53.749" N
P-259	84° 55' 44.319" E	21° 0' 52.785" N
P-260	84° 55' 46.918" E	21° 0' 51.049" N
P-261	84° 55' 49.522" E	21° 0' 49.915" N
P-262	84° 55' 53.539" E	21° 0' 47.783" N
P-263	84° 55' 55.731" E	21° 0' 46.695" N
P-264	84° 55' 58.239" E	21° 0' 45.080" N
P-265	84° 55' 59.827" E	21° 0' 44.141" N
P-266	84° 56' 2.540" E	21° 0' 42.912" N
P-267	84° 56' 5.052" E	21° 0' 41.930" N
P-268	84° 56' 6.414" E	21° 0' 41.331" N
P-269	84° 56' 8.289" E	21° 0' 39.530" N
P-270	84° 56' 9.437" E	21° 0' 38.465" N
P-271	84° 56' 10.472" E	21° 0' 37.195" N
P-272	84° 56' 11.394" E	21° 0' 35.357" N
P-273	84° 56' 12.506" E	21° 0' 33.079" N
P-274	84° 56' 13.316" E	21° 0' 30.906" N
P-275	84° 56' 14.859" E	21° 0' 27.515" N
P-276	84° 56' 16.185" E	21° 0' 24.410" N
P-277	84° 56' 16.862" E	21° 0' 22.961" N
P-278	84° 56' 17.073" E	21° 0' 21.643" N
P-279	84° 56' 19.451" E	21° 0' 19.745" N
P-280	84° 56' 21.676" E	21° 0' 18.080" N
P-281	84° 56' 22.513" E	21° 0' 17.249" N
P-282	84° 56' 23.018" E	21° 0' 16.144" N

Provisional Cardinal Points for PHULHARI EAST & WEST Block

POINT NO	Longitude (WGS84)	Latitude (WGS84)
P-283	84° 56' 23.284" E	21° 0' 14.818" N
P-284	84° 56' 23.404" E	21° 0' 12.236" N
P-285	84° 56' 23.476" E	21° 0' 9.397" N
P-286	84° 56' 25.244" E	21° 0' 6.676" N