

North West of Belgaon Block Summary

PART A

Sr. No.	Features	Details
1.	Location	
	Coal Block	North West of Belgaon Block
	Latitude	20° 18' 51" N - 20° 23' 36" N (Provisional)
	Longitude	78° 57' 43" E - 79° 01' 17" E (Provisional)
	Topo Sheet No.	55 P/3 & 55 L/15
	Coalfield	Wardha Valley Coalfield
	Villages	Jhamni Buzurg, Telegaon, Mangli, Atmurdi, Umri, Temurda
	Tehsil/Taluka	Warora
	District	Chandrapur
	State	Maharashtra
2.	Connectivity with Block	
	Nearest Rail Head	The nearest town and Railway Station is Warora town, a Tehsil place.
	Road	The blocks is located approx. 90km south of Nagpur and 55 km from Chandrapur District headquarter, bounded by Nagpur-Chandrapur state highway no.264 in the east. Major township Warora is approx. 15 km south of the block on the National Highway. The block is also traversed by a number of roads connecting Jhamni Buzurg village situated in the central part of the block, with villages like Telegaon, Mangli, Atmurdi and Umri and are mostly connected by motorable roads.
	Airport	Nagpur airport at about 90 km north of the block.
3.	Area	
	Geological Block Area	30.79 Sq. Km. (Revised area-Please refer Note #5 below)
	Green Cover	Approx. 5% (As per FSI Map)
	Non-Forest Area	Approx. 95%
4.	Climate and Topography	
	Average Annual Rainfall	1000-1200 mm
	Temperature (Min. — Max.)	7°C-48°C
	Local Surface Drainage Channels	The block is traversed by Daiwal Nadi and Asulhira Nadi which flow east-west direction in the middle of the block. Several Nalas flow in the block which meeti these Rivers and Lendi Nala in the south.
	Rivers	Daiwal & Asulhira Nadi
5.	Exploration	
	Status	Regionally Explored

	Exploration Agency	MECL, GSI, CMPDI			
	Total Number of Boreholes with meterage	53 boreholes & 16631.70 m			
	Borehole Density	About 1.7 boreholes per sq. km			
	General Dip of Seams	The dip of the beds vary from 3.4° to 4.7° due North-East.			
	General Strike Direction	The strike of the bed in the southern part is N30°W to S30°E, it is N50°W to S50°E in the middle.			
	Faults	As per the structure reported on the Geological report on Temurda Block, faults F1-F1 & F2-F2 have been tentatively extended up to the North (North-west) of Belgaon block. Throw ranging between 40 m -135 m.			
6.	Coal Seams & Resources				
	Coal Seams	Thickness Range (m)	Depth Range (m)	Resources (MT)	Grade
	Local Band	0.05-0.59	226.57-570.86		
	Top Section	0.17-0.81	288.98-493.26		G7-G8
	Middle Section	0.18-2.10	295.51-351.04		G4-G14
	Bottom Section	2.62-3.73	302.10-378.37		G4-G10
	Middle+Bottom Section	4.66-6.00	401.70-500.80		G7-G14
	Total			120.00	
7.	Surface Constraints	Daiwal.& Asulhira rivers & Lendi Nala flowing from the block.			
8.	Grade of coal	G8 (Provisional) based on weighted average grade of seam-wise grade-wise data given in the regional GRs of Temurda Block and Chikni Sector.			
9.	Decision Support System (DSS) Analysis	Hydrology info: The polygon touches major river(s). Wildlife info: The polygon touches Wildlife Habitat(s), Sloth Bear, and Great Indian Bustard.			
10.	Eco Sensitive Zone (ESZ) Analysis	Approx. 18.3 km to Tadoba-Andhari Tiger Corridor in East direction.			

Note:

1. The above data is compiled from Geological Report, Mining Plan and the data furnished by the prior allottee in Annexure-I/II, as available. For clarifications with regard to above data, please refer aforesaid source documents.
2. The boundary of the block has been taken from GR after conversion to WGS84 system by feature matching. The block boundary is provisional and the cardinal points, bounding co-ordinates are approximate.

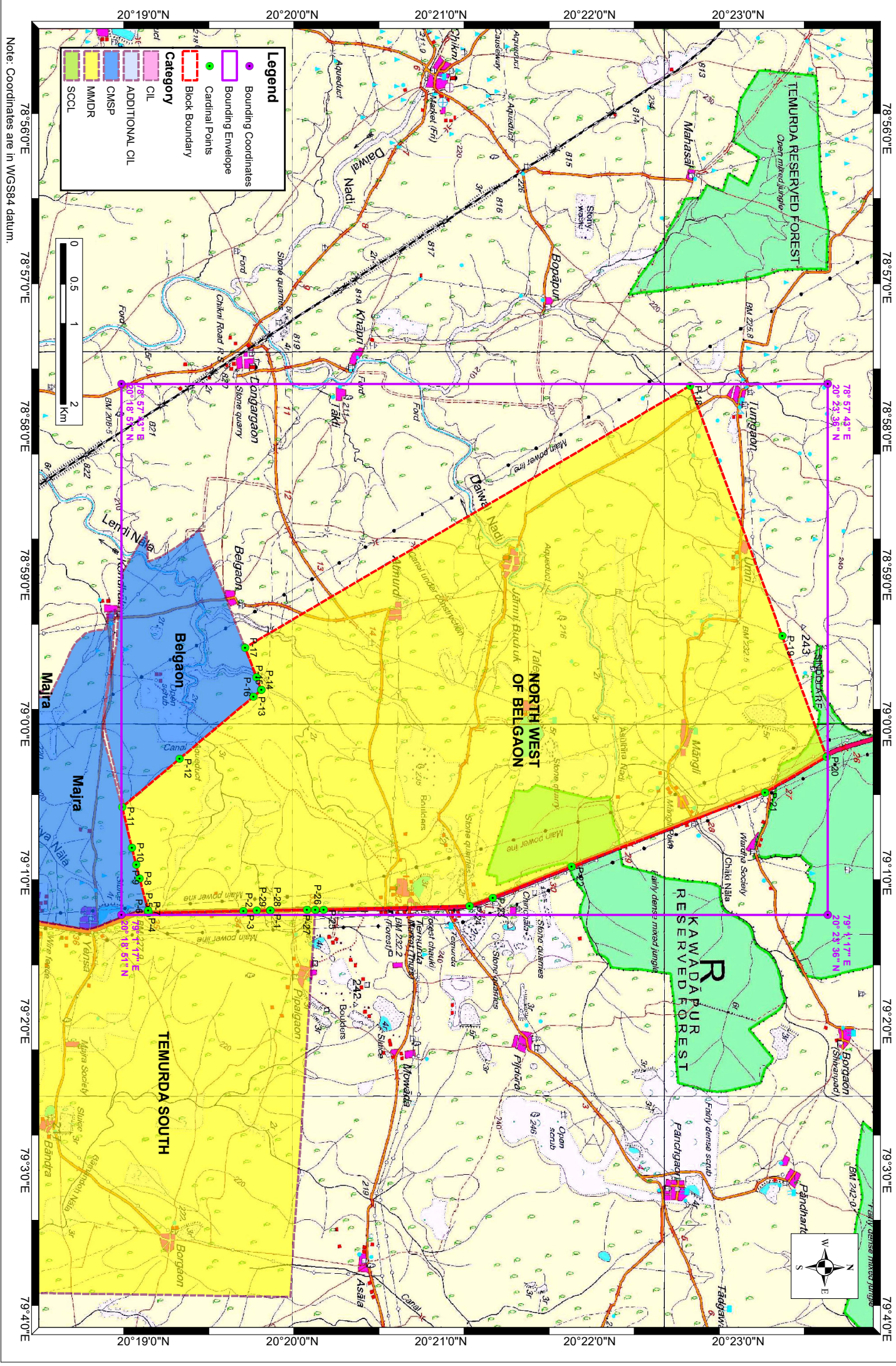
3. There is a difference in area in the shape file and GR. Area in the shape file is based on feature mapped plan of the block as given in the GR. So, the area is tentative and field DGPS survey is required to ascertain the exact area.
4. The summary has been compiled from **1.** “Geological Note on North (North-West) of Belgaon (Captive) Block, Wardha Valley Coalfield, District-Chandrapur, Maharashtra, CMPDI-2016”, **2.** “Geological Report on Regional Exploration for Coal, Temurda Block, Wardha Valley Coalfield, District- Chandrapur, Maharashtra, MECL-2013” & **3.** “Final Report on Exploration for Coal by Scout Drilling in the Chikni Sector, Wardha Valley Coalfield, Chandrapur District, Maharashtra, GSI-2009.” And drilling data by CMPDI.
5. The block boundary is revised to annex the area left out between Temurda South and Belgaon blocks in the south.

Disclaimer:

1. The analysis is done on Beta-version (Trial Version) of Decision Support System (DSS) of FSI/ MOEF.
2. The Decision Rules for various parameters of this DSS System are controlled by FSI.
3. CMPDI only runs this DSS to obtain the status of any block based on these Decision Rules.
4. The database of the Decision Rules is updated by FSI from time to time.
5. CMPDI does not own any responsibility for variation in the results which are based on the decision Rules of the FSI DSS in case of any updation of the database at FSI end.
6. ESZ analysis and tiger habitat/ corridor given here is based on the information available in public domain. Bidders are encouraged to verify this information and any other information additionally available.

North West of Belgaon Block, Wardha Valley Coalfield

FOR INTERNAL/RESTRICTED USE ONLY



20°19'0"N 20°20'0"N 20°21'0"N 20°22'0"N 20°23'0"N

78°56'0"E 78°57'0"E 78°58'0"E 78°59'0"E 79°0'0"E 79°1'0"E 79°2'0"E 79°3'0"E 79°4'0"E

Legend

- Bounding Coordinates
- Bounding Envelope
- Cardinal Points
- Block Boundary
- Category
- ADDITIONAL CIL
- CIL
- CMSP
- MMDR
- SCCL

0 0.5 1 2 km

Note: Coordinates are in WGS84 datum.

78°56'0"E 78°57'0"E 78°58'0"E 78°59'0"E 79°0'0"E 79°1'0"E 79°2'0"E 79°3'0"E 79°4'0"E

20°19'0"N 20°20'0"N 20°21'0"N 20°22'0"N 20°23'0"N

78°56'0"E 78°57'0"E 78°58'0"E 78°59'0"E 79°0'0"E 79°1'0"E 79°2'0"E 79°3'0"E 79°4'0"E

20°19'0"N 20°20'0"N 20°21'0"N 20°22'0"N 20°23'0"N

78°56'0"E 78°57'0"E 78°58'0"E 78°59'0"E 79°0'0"E 79°1'0"E 79°2'0"E 79°3'0"E 79°4'0"E

20°19'0"N 20°20'0"N 20°21'0"N 20°22'0"N 20°23'0"N

78°56'0"E 78°57'0"E 78°58'0"E 78°59'0"E 79°0'0"E 79°1'0"E 79°2'0"E 79°3'0"E 79°4'0"E

20°19'0"N 20°20'0"N 20°21'0"N 20°22'0"N 20°23'0"N

78°56'0"E 78°57'0"E 78°58'0"E 78°59'0"E 79°0'0"E 79°1'0"E 79°2'0"E 79°3'0"E 79°4'0"E

20°19'0"N 20°20'0"N 20°21'0"N 20°22'0"N 20°23'0"N

78°56'0"E 78°57'0"E 78°58'0"E 78°59'0"E 79°0'0"E 79°1'0"E 79°2'0"E 79°3'0"E 79°4'0"E

20°19'0"N 20°20'0"N 20°21'0"N 20°22'0"N 20°23'0"N

78°56'0"E 78°57'0"E 78°58'0"E 78°59'0"E 79°0'0"E 79°1'0"E 79°2'0"E 79°3'0"E 79°4'0"E

20°19'0"N 20°20'0"N 20°21'0"N 20°22'0"N 20°23'0"N

78°56'0"E 78°57'0"E 78°58'0"E 78°59'0"E 79°0'0"E 79°1'0"E 79°2'0"E 79°3'0"E 79°4'0"E

20°19'0"N 20°20'0"N 20°21'0"N 20°22'0"N 20°23'0"N

78°56'0"E 78°57'0"E 78°58'0"E 78°59'0"E 79°0'0"E 79°1'0"E 79°2'0"E 79°3'0"E 79°4'0"E

20°19'0"N 20°20'0"N 20°21'0"N 20°22'0"N 20°23'0"N

78°56'0"E 78°57'0"E 78°58'0"E 78°59'0"E 79°0'0"E 79°1'0"E 79°2'0"E 79°3'0"E 79°4'0"E

20°19'0"N 20°20'0"N 20°21'0"N 20°22'0"N 20°23'0"N

78°56'0"E 78°57'0"E 78°58'0"E 78°59'0"E 79°0'0"E 79°1'0"E 79°2'0"E 79°3'0"E 79°4'0"E

20°19'0"N 20°20'0"N 20°21'0"N 20°22'0"N 20°23'0"N

78°56'0"E 78°57'0"E 78°58'0"E 78°59'0"E 79°0'0"E 79°1'0"E 79°2'0"E 79°3'0"E 79°4'0"E

20°19'0"N 20°20'0"N 20°21'0"N 20°22'0"N 20°23'0"N

78°56'0"E 78°57'0"E 78°58'0"E 78°59'0"E 79°0'0"E 79°1'0"E 79°2'0"E 79°3'0"E 79°4'0"E

20°19'0"N 20°20'0"N 20°21'0"N 20°22'0"N 20°23'0"N

78°56'0"E 78°57'0"E 78°58'0"E 78°59'0"E 79°0'0"E 79°1'0"E 79°2'0"E 79°3'0"E 79°4'0"E

20°19'0"N 20°20'0"N 20°21'0"N 20°22'0"N 20°23'0"N

78°56'0"E 78°57'0"E 78°58'0"E 78°59'0"E 79°0'0"E 79°1'0"E 79°2'0"E 79°3'0"E 79°4'0"E

20°19'0"N 20°20'0"N 20°21'0"N 20°22'0"N 20°23'0"N

78°56'0"E 78°57'0"E 78°58'0"E 78°59'0"E 79°0'0"E 79°1'0"E 79°2'0"E 79°3'0"E 79°4'0"E

Provisional Cardinal Points for NORTH WEST OF BELGAON Block

POINT NO	Longitude (WGS84)	Latitude (WGS84)
P-1	79° 1' 15.242" E	20° 19' 51.152" N
P-2	79° 1' 15.322" E	20° 19' 45.598" N
P-3	79° 1' 15.437" E	20° 19' 40.226" N
P-4	79° 1' 16.248" E	20° 19' 1.996" N
P-5	79° 1' 15.895" E	20° 19' 1.936" N
P-6	79° 1' 15.894" E	20° 19' 1.936" N
P-7	79° 1' 15.385" E	20° 19' 1.848" N
P-8	79° 1' 2.290" E	20° 18' 58.374" N
P-9	79° 0' 56.960" E	20° 18' 56.961" N
P-10	79° 0' 49.937" E	20° 18' 55.285" N
P-11	79° 0' 33.557" E	20° 18' 51.338" N
P-12	79° 0' 14.052" E	20° 19' 14.533" N
P-13	78° 59' 49.054" E	20° 19' 44.270" N
P-14	78° 59' 46.352" E	20° 19' 47.484" N
P-15	78° 59' 46.351" E	20° 19' 47.484" N
P-16	78° 59' 41.177" E	20° 19' 45.497" N
P-17	78° 59' 29.212" E	20° 19' 40.900" N
P-18	78° 57' 43.671" E	20° 22' 40.506" N
P-19	78° 59' 24.513" E	20° 23' 17.616" N
P-20	79° 0' 13.292" E	20° 23' 35.539" N
P-21	79° 0' 27.675" E	20° 23' 10.656" N
P-22	79° 0' 57.548" E	20° 21' 52.590" N
P-23	79° 1' 10.076" E	20° 21' 20.789" N
P-24	79° 1' 13.395" E	20° 21' 11.473" N
P-25	79° 1' 14.930" E	20° 20' 12.684" N
P-26	79° 1' 14.980" E	20° 20' 9.179" N
P-27	79° 1' 15.028" E	20° 20' 5.867" N
P-28	79° 1' 15.242" E	20° 19' 51.153" N

Note: The provisional cardinal points are in WGS84 coordinate system. These points are extracted through ArcGIS software after georeferencing of block boundary and onground DGPS survey is required to ascertain the exact location of the points.