

## NORTH WEST OF MADHERI BLOCK SUMMARY

### PART A

Sr. No.	Features	Details
<b>1.</b>	<b>Location</b>	
	Coal Block	<b>North West of Madheri</b>
	Latitude	20° 20' 41" N - 20° 24' 3" N (Provisional)
	Longitude	78° 43' 29" E - 78° 49' 33" E (Provisional)
	Topo Sheet No.	55L/15
	Coalfield	Wardha Valley
	Villages	Pipri, Janghona, Khapri, Sukali, Parsoda, Selu, Veni, Yeli, Shekapur, Bori, Dhanora
	Tehsil/Taluka	Hinganghat
	District	Chandrapur
	State	Maharashtra
<b>2.</b>	<b>Connectivity with Block</b>	
	Nearest Rail Head	The nearest railway station is Nagri which is about 5-10 Kms from the eastern boundary of the block by road.
	Road	The Block is connected to Tahsil town Warora by an all-weather metal road and the Jamb-Warora-Yeotmal-Rajura State Highway road (SH 264) lies around 45-50 kms from eastern side the block.
	Airport	The nearest airport, Nagpur Airport is situated in Nagpur at a distance of about 90 km from the block.
<b>3.</b>	<b>Area</b>	
	Geological Block Area	36.61 sq.km. (As per shape file, Please refer Note below)
	Green Area	Approx. 2% (As per FSI Map)
	Non-Forest Area	Approx. 98 % (As per FSI Map)
<b>4.</b>	<b>Climate and Topography</b>	
	Average Annual Rainfall	mm –mm
	Temperature (Min. — Max.)	15°C-50°C
	Local Surface Drainage Channels	Overall the block experiences the gently undulating topography with exposures of Deccan traps. Few seasonal nalas and barren lands have also been found.
	Rivers	Vena river flows along eastern boundary of the block
<b>5.</b>	<b>Exploration</b>	
	Status	Regionally Explored

	Exploration Agency	DGM/CMPDI			
	Total Number of Boreholes with meterage	Bh.-55, Meterage-9119.5m (Total depth of 1 bh. of DGM is not available)			
	Borehole Density	Approx. 1.5 Boreholes/sq.km.			
	General Dip of Seams	The amount varies from 5°-6° towards NE.			
	General Strike Direction	NW-SE			
	Faults	9 faults are interpreted based on exploration data. Throw varies from 25m to 150m			
<b>6.</b>	<b>Coal Seams &amp; Reserve</b>				
	Coal Seams	Thickness Range (m)	Depth Range (m)	Geological Reserve (MT)	Grade
	Top	2.92-16.50	53.00-171.48		
	Bottom	0.13-2.20	67.00-189.00		
		<b>Total Reserve</b>		<b>200</b>	
<b>7.</b>	<b>Surface Constraints</b>	No major constraints			
<b>8.</b>	<b>Grade of the block</b>	Tentative weighted average grade G10 based on regional geological reports in and around the block			
<b>9.</b>	<b>Decision Support System (DSS) Analysis</b>	Hydrology: The polygon touches major river(s).			
<b>10.</b>	<b>Eco Sensitive Zone (ESZ) Analysis</b>	The ESZ boundary of Tadoba Andher and TA-PA of TADOBA TIGER RESERVE is Approx.38 kms away from Eastern block boundary and ESZ boundary of Tppeshwar WLS is Approx.43 kms away from S-W block boundary .Also, the tiger corridor between Kanha & Indravati is Approx. 70 kms away from Eastern block boundary and TA-PA of Bor is Approx.59 kms away from Northern block boundary.			
<b>11.</b>	<b>CBA Land Acquisition Status</b>	No information available.			

**Note:**

1. The above data is compiled from Geological Report, Mining Plan and the data furnished by the prior allottee in Annexure-I/II, as available. For clarifications with regard to above data, please refer aforesaid source documents.
2. The boundary of the block has been taken from GR after conversion to WGS84 system by feature matching. The block boundary is provisional and the cardinal points, bounding co-ordinates are approximate.
3. There is a difference in area in the shape file and GR. Area in the shape file is based on feature mapped plan of the block as given in the GR. So, the area is tentative and field DGPS survey is required to ascertain the exact area.

4. Geological report of the area is not available. Hence grade, seam sequence and other geological data are likely to vary on further exploration.

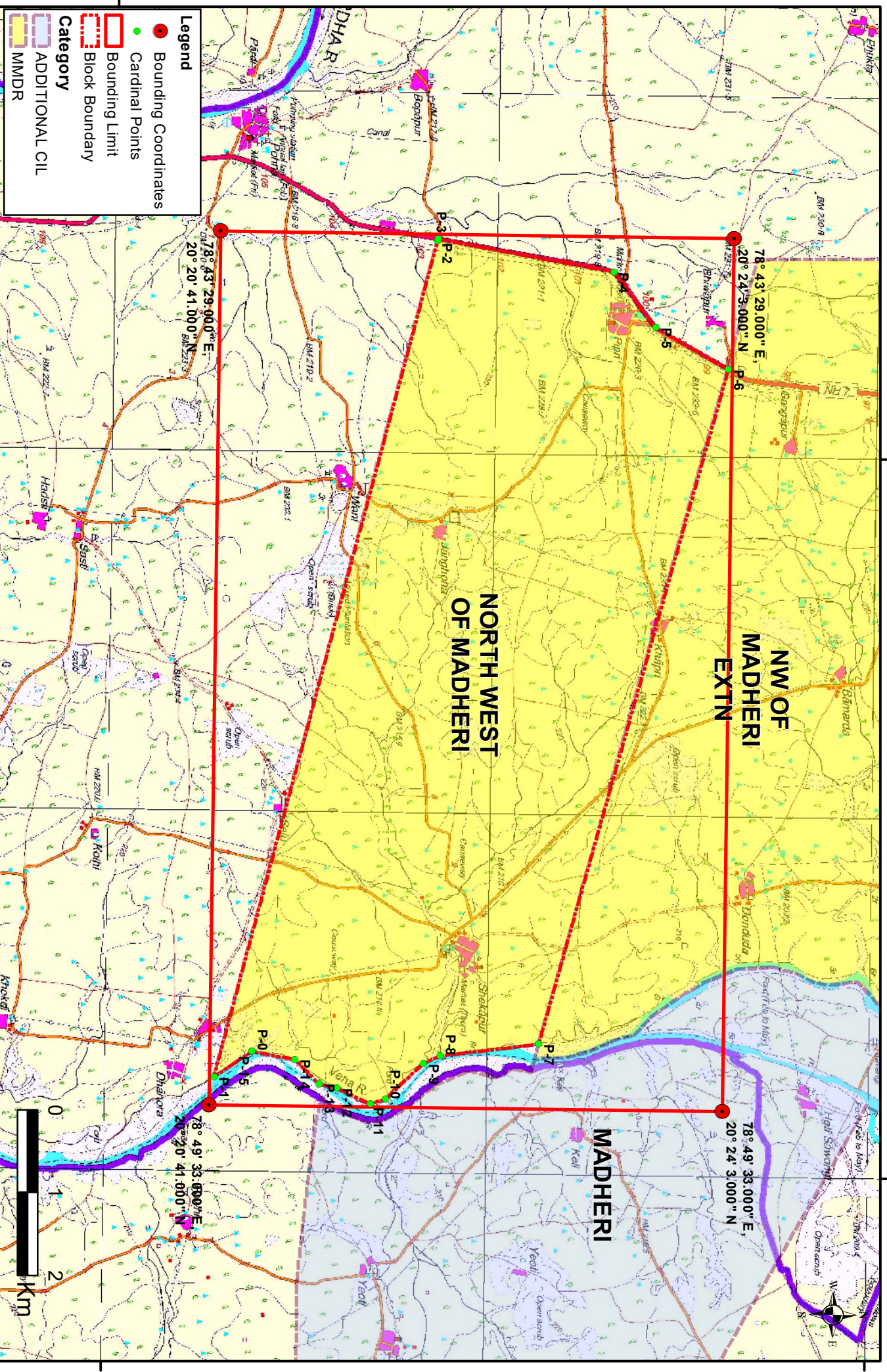
**Disclaimer:**

1. The analysis is done on Beta-version (Trial Version) of Decision Support System (DSS) of FSI/MOEF.
2. The Decision Rules for various parameters of this DSS System are controlled by FSI.
3. CMPDI only runs this DSS to obtain the status of any block based on these Decision Rules.
4. The database of the Decision Rules is updated by FSI from time to time.
5. CMPDI does not own any responsibility for variation in the results which are based on the decision Rules of the FSI DSS in case of any updation of the database at FSI end.
6. ESZ analysis and tiger habitat/ corridor given here is based on the information available in public domain. Bidders are encouraged to verify this information and any other information additionally available.



North West of Madheri block, Wardha Valley Coalfield

FOR INTERNAL/RESTRICTED USE ONLY



**Legend**

- Bounding Coordinates
- Cardinal Points
- Bounding Limit
- Block Boundary
- Category
- ADDITIONAL CIL
- MMDR

Note: Coordinates are in WGS84 datum

20°20'0"N

20°20'0"N

78°45'0"E

78°50'0"E

78°45'0"E

78°50'0"E

78° 43' 29.000" E,  
20° 20' 41.000" N

78° 49' 33.000" E,  
20° 20' 41.000" N

78° 43' 29.000" E,  
20° 24' 3.000" N

78° 49' 33.000" E,  
20° 24' 3.000" N

NW OF  
MADHERI  
EXTN

NORTH WEST  
OF MADHERI

MADHERI



**Provisional Cardinal Points for NORTH WEST OF MADHERI Block**

POINT NO	Longitude (WGS84)	Latitude (WGS84)
P-1	78° 49' 10.424" E	20° 20' 57.702" N
P-2	78° 49' 21.251" E	20° 20' 42.839" N
P-3	78° 43' 31.693" E	20° 22' 6.365" N
P-4	78° 43' 30.893" E	20° 22' 6.537" N
P-5	78° 43' 43.563" E	20° 23' 15.770" N
P-6	78° 44' 6.660" E	20° 23' 32.746" N
P-7	78° 44' 23.664" E	20° 24' 1.344" N
P-8	78° 49' 5.893" E	20° 22' 50.372" N
P-9	78° 49' 11.228" E	20° 22' 11.661" N
P-10	78° 49' 14.430" E	20° 22' 5.208" N
P-11	78° 49' 29.505" E	20° 21' 50.375" N
P-12	78° 49' 31.565" E	20° 21' 44.352" N
P-13	78° 49' 25.191" E	20° 21' 31.220" N
P-14	78° 49' 23.738" E	20° 21' 24.333" N
P-15	78° 49' 13.463" E	20° 21' 14.560" N