

NIGWANI BAKELI-A BLOCK SUMMARY

PART A

Sr. No	Features	Details
1.	Location	
	Coal Block	Nigwani Bakeli-A
	Latitude	23° 22' 30" N - 23° 25' 23" N (Provisional)
	Longitude	81° 15' 26" E - 81° 20' 28" E (Provisional)
	Topo Sheet No.	F44D3
	Coalfield	Sohagpur Coalfield
	Villages	Jamudi, Neusa, Madha Tola, Mohtarai, Ghaghadar, Dhaurai
	Tehsil/Taluka	Pali
	District	Umaria
	State	Madhya Pradesh
2.	Connectivity with Block	
	Nearest Rail Head	Shahdol is the nearest Railway station situated in the Bilaspur-Katni section of South East Central Railway.
	Road	The area is well connected by road to Shahdol, the district headquarter, which is located about 5 kms towards south. Shahdol-Rewa highway is passing through the central part of the area. Fair weather, jeepable, unmetalled and metalled roads also connect different villages in the area.
	Airport & Seaport	-
3.	Area	
	Geological Block Area	28.3 sqkm (As per shape file refer note below)
	Green Cover	Approx. 2 % (As per FSI)
	Non-Forest Area	Approx. 98 % (As per FSI)
4.	Climate and Topography	
	Average Annual Rainfall	-
	Temperature (Min. — Max.)	11°C to 40°C
	Local Surface Drainage Channels	Son River is flowing around the north-eastern corner of the area. In the western part Murna nala & Gahira Nala are northerly flowing first to fifth order streams. Whereas the eastern part is drained by northerly flowing Patase Nadi and Makarkund Nadi, which are first to fourth order streams. The drainage pattern of the area is sub-dendritic to dendritic. In addition to this trellis pattern is also observed in the eastern & north central part of the area.
	Rivers	Son River, Gahira Nadi
5.	Exploration	
	Status	Under Regional Exploration

	Exploration Agency	GSI, MECL			
	Total Number of Boreholes with meterage	25 Boreholes, 12408.50 m			
	Borehole Density	Approx. 0.9 BHs/sqkm			
	General Dip of Seams	Block is under regional exploration. Structure is not finalized yet.			
	General Strike Direction	Block is under regional exploration. Structure is not finalized yet.			
6. Coal Seams & Reserve					
	Coal Seams	Thickness Range (m)	Depth Range (m)	Geological Reserve (MT) (Indicated)	Grade
	IV	0.68-1.73	244.00-522.46		A-E
	L2	0.74	556.92-557.66		F
	IIIA	2.65-4.03	295.33-584.20		A-F
	IIIB	0.30-1.00	358.50-588.47		A-E
	II	0.28-0.70	317.97-503.70		A-E
	I	1.08-1.25	403.08-626.95		D
	Local	0.24-1.17	408.10-673.05		A-D
		Total		300 (Tentative)	
7.	Surface Constraints	NA			
8.	Grade of coal	G8 (Provisional), based on weighted average grade as per grade-wise data in regional GR on Nigwani Bakeli Block by GSI.			
9.	Decision Support System (DSS) Analysis	Hydrology Info: Polygon touches Murna Nadi, Gahira Nadi and Murna Nala. Wildlife Info:Sloth Bear & Dhole			
10.	Eco Sensitive Zone (ESZ) Analysis	The Bandhavgarh ESZ is 6.85 km NW from the block boundary. The Bandhavgarh-Achanakmar Tiger corridor is 6.35 km west of the block boundary. The Bandhavgarh-Guru Ghasidas Corridor is 9.20 kms north of the block boundary.			

Note:

1. The above data is compiled from Geological Report, Mining Plan and the data furnished by the prior allottee in Annexure-I/II, as available. For clarifications with regard to above data, please refer aforesaid source documents.
2. The boundary of the block has been taken from GR after conversion to WGS84 system by feature matching. The block boundary is provisional and the cardinal points, bounding co-ordinates are approximate.
3. There is a difference in area in the shape file and GR. Area in the shape file is based on feature mapped plan of the block as given in the GR. So, the area is tentative and field DGPS survey is required to ascertain the exact area.
4. Part of the block is under regional exploration. Structure of the block is yet to be finalized. Seam sequence is taken from regional geological report on Nigwani Bakeli block by GSI.

Disclaimer:

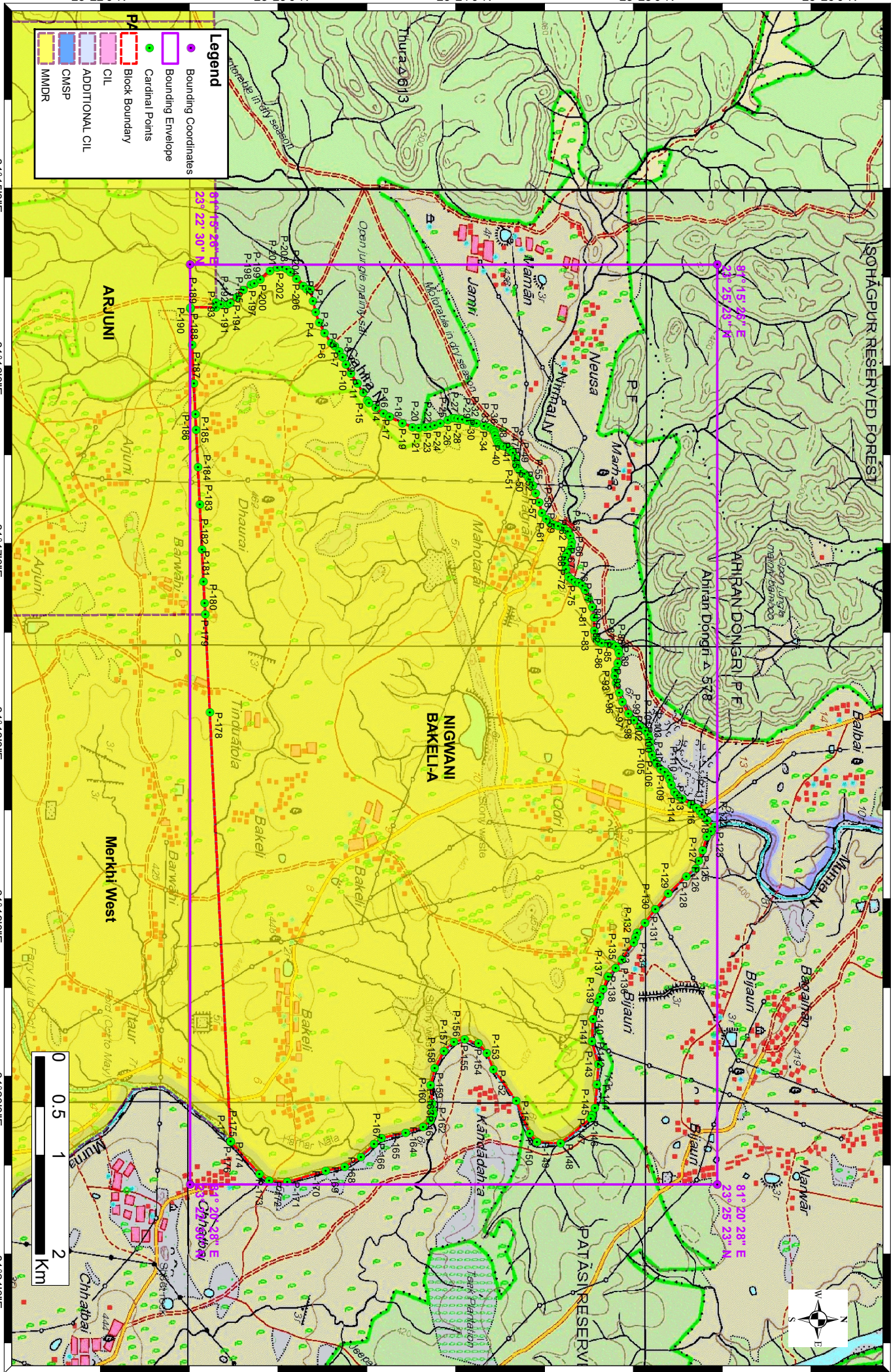
1. The analysis is done on Beta-version (Trial Version) of Decision Support System (DSS) of FSI/ MOEF.
2. The Decision Rules for various parameters of this DSS System are controlled by FSI.
3. CMPDI only runs this DSS to obtain the status of any block based on these Decision Rules.
4. The database of the Decision Rules is updated by FSI from time to time.
5. CMPDI does not own any responsibility for variation in the results which are based on the decision Rules of the FSI DSS in case of any update of the database at FSI end.
6. ESZ analysis and tiger habitat/ corridor given here is based on the information available in public domain. Bidders are encouraged to verify this information and any other information additionally available.

23°22'0"N 23°23'0"N 23°24'0"N 23°25'0"N 23°26'0"N

Nigwani Bakeli-A Block, Sohagpur Coalfield

FOR INTERNAL/RESTRICTED USE ONLY

Note: Coordinates are in WGS84 datum.



23°22'0"N 23°23'0"N 23°24'0"N 23°25'0"N 23°26'0"N

81°15'0"E 81°16'0"E 81°17'0"E 81°18'0"E 81°19'0"E 81°20'0"E 81°21'0"E

Provisional Cardinal Points for NIGWANI BAKELI-A Block

POINT NO	Longitude (WGS84)	Latitude (WGS84)
P-1	81° 15' 34.014" E	23° 23' 9.392" N
P-2	81° 15' 37.992" E	23° 23' 10.294" N
P-3	81° 15' 41.547" E	23° 23' 11.151" N
P-4	81° 15' 44.930" E	23° 23' 12.307" N
P-5	81° 15' 48.485" E	23° 23' 14.106" N
P-6	81° 15' 51.754" E	23° 23' 16.273" N
P-7	81° 15' 52.781" E	23° 23' 17.481" N
P-8	81° 15' 54.606" E	23° 23' 18.920" N
P-9	81° 15' 56.353" E	23° 23' 20.050" N
P-10	81° 15' 58.846" E	23° 23' 21.130" N
P-11	81° 16' 1.750" E	23° 23' 22.774" N
P-12	81° 16' 5.014" E	23° 23' 24.856" N
P-13	81° 16' 8.098" E	23° 23' 26.835" N
P-14	81° 16' 10.586" E	23° 23' 28.122" N
P-15	81° 16' 11.400" E	23° 23' 28.636" N
P-16	81° 16' 13.070" E	23° 23' 30.906" N
P-17	81° 16' 14.912" E	23° 23' 33.390" N
P-18	81° 16' 16.068" E	23° 23' 35.489" N
P-19	81° 16' 18.081" E	23° 23' 39.686" N
P-20	81° 16' 19.323" E	23° 23' 42.941" N
P-21	81° 16' 19.538" E	23° 23' 44.997" N
P-22	81° 16' 19.495" E	23° 23' 47.181" N
P-23	81° 16' 19.238" E	23° 23' 48.809" N
P-24	81° 16' 18.724" E	23° 23' 50.222" N
P-25	81° 16' 18.030" E	23° 23' 52.119" N
P-26	81° 16' 16.925" E	23° 23' 54.535" N
P-27	81° 16' 16.360" E	23° 23' 56.000" N
P-28	81° 16' 16.360" E	23° 23' 56.899" N
P-29	81° 16' 16.514" E	23° 23' 57.953" N
P-30	81° 16' 16.873" E	23° 23' 59.263" N
P-31	81° 16' 17.233" E	23° 24' 0.882" N
P-32	81° 16' 17.783" E	23° 24' 2.676" N
P-33	81° 16' 18.143" E	23° 24' 3.944" N
P-34	81° 16' 18.863" E	23° 24' 6.342" N
P-35	81° 16' 19.445" E	23° 24' 7.936" N
P-36	81° 16' 20.045" E	23° 24' 9.032" N
P-37	81° 16' 20.541" E	23° 24' 9.700" N
P-38	81° 16' 21.244" E	23° 24' 9.906" N
P-39	81° 16' 22.101" E	23° 24' 10.094" N
P-40	81° 16' 23.420" E	23° 24' 10.557" N
P-41	81° 16' 24.345" E	23° 24' 10.968" N
P-42	81° 16' 24.944" E	23° 24' 11.414" N
P-43	81° 16' 25.458" E	23° 24' 12.133" N
P-44	81° 16' 25.718" E	23° 24' 12.893" N
P-45	81° 16' 26.095" E	23° 24' 14.093" N
P-46	81° 16' 26.900" E	23° 24' 15.172" N
P-47	81° 16' 27.723" E	23° 24' 15.874" N

Provisional Cardinal Points for NIGWANI BAKELI-A Block

POINT NO	Longitude (WGS84)	Latitude (WGS84)
P-48	81° 16' 29.385" E	23° 24' 16.645" N
P-49	81° 16' 31.166" E	23° 24' 17.022" N
P-50	81° 16' 32.194" E	23° 24' 17.279" N
P-51	81° 16' 33.137" E	23° 24' 17.725" N
P-52	81° 16' 33.736" E	23° 24' 18.427" N
P-53	81° 16' 34.747" E	23° 24' 19.678" N
P-54	81° 16' 35.843" E	23° 24' 20.963" N
P-55	81° 16' 36.565" E	23° 24' 21.537" N
P-56	81° 16' 38.493" E	23° 24' 22.479" N
P-57	81° 16' 41.020" E	23° 24' 23.421" N
P-58	81° 16' 44.189" E	23° 24' 24.577" N
P-59	81° 16' 47.444" E	23° 24' 25.477" N
P-60	81° 16' 49.414" E	23° 24' 26.762" N
P-61	81° 16' 50.656" E	23° 24' 28.090" N
P-62	81° 16' 51.427" E	23° 24' 29.417" N
P-63	81° 16' 51.727" E	23° 24' 30.788" N
P-64	81° 16' 52.412" E	23° 24' 32.544" N
P-65	81° 16' 53.526" E	23° 24' 33.872" N
P-66	81° 16' 55.153" E	23° 24' 34.814" N
P-67	81° 16' 57.124" E	23° 24' 35.242" N
P-68	81° 16' 58.451" E	23° 24' 35.028" N
P-69	81° 16' 59.736" E	23° 24' 34.514" N
P-70	81° 17' 0.850" E	23° 24' 33.657" N
P-71	81° 17' 2.178" E	23° 24' 33.144" N
P-72	81° 17' 4.062" E	23° 24' 33.015" N
P-73	81° 17' 5.904" E	23° 24' 33.315" N
P-74	81° 17' 8.685" E	23° 24' 34.215" N
P-75	81° 17' 9.507" E	23° 24' 35.243" N
P-76	81° 17' 10.176" E	23° 24' 36.425" N
P-77	81° 17' 10.484" E	23° 24' 37.659" N
P-78	81° 17' 11.255" E	23° 24' 38.738" N
P-79	81° 17' 12.900" E	23° 24' 39.663" N
P-80	81° 17' 15.521" E	23° 24' 40.794" N
P-81	81° 17' 18.399" E	23° 24' 41.925" N
P-82	81° 17' 21.791" E	23° 24' 42.593" N
P-83	81° 17' 26.108" E	23° 24' 42.696" N
P-84	81° 17' 28.730" E	23° 24' 43.210" N
P-85	81° 17' 29.706" E	23° 24' 44.186" N
P-86	81° 17' 30.220" E	23° 24' 45.111" N
P-87	81° 17' 30.528" E	23° 24' 47.219" N
P-88	81° 17' 30.683" E	23° 24' 48.658" N
P-89	81° 17' 31.299" E	23° 24' 49.788" N
P-90	81° 17' 32.533" E	23° 24' 50.611" N
P-91	81° 17' 33.715" E	23° 24' 50.765" N
P-92	81° 17' 36.799" E	23° 24' 50.354" N
P-93	81° 17' 39.214" E	23° 24' 49.531" N
P-94	81° 17' 41.065" E	23° 24' 49.377" N

Provisional Cardinal Points for NIGWANI BAKELI-A Block

POINT NO	Longitude (WGS84)	Latitude (WGS84)
P-95	81° 17' 43.480" E	23° 24' 49.788" N
P-96	81° 17' 46.616" E	23° 24' 50.816" N
P-97	81° 17' 49.597" E	23° 24' 51.896" N
P-98	81° 17' 53.348" E	23° 24' 53.797" N
P-99	81° 17' 55.494" E	23° 24' 55.678" N
P-100	81° 17' 57.756" E	23° 24' 57.631" N
P-101	81° 17' 59.092" E	23° 24' 59.378" N
P-102	81° 18' 0.326" E	23° 25' 0.355" N
P-103	81° 18' 1.405" E	23° 25' 0.612" N
P-104	81° 18' 2.587" E	23° 25' 0.971" N
P-105	81° 18' 4.848" E	23° 25' 1.126" N
P-106	81° 18' 7.007" E	23° 25' 1.588" N
P-107	81° 18' 8.755" E	23° 25' 2.256" N
P-108	81° 18' 10.091" E	23° 25' 3.181" N
P-109	81° 18' 11.684" E	23° 25' 4.415" N
P-110	81° 18' 12.558" E	23° 25' 5.751" N
P-111	81° 18' 13.791" E	23° 25' 6.882" N
P-112	81° 18' 15.128" E	23° 25' 7.293" N
P-113	81° 18' 16.927" E	23° 25' 7.910" N
P-114	81° 18' 19.137" E	23° 25' 8.938" N
P-115	81° 18' 20.216" E	23° 25' 9.863" N
P-116	81° 18' 21.501" E	23° 25' 11.559" N
P-117	81° 18' 23.197" E	23° 25' 14.437" N
P-118	81° 18' 24.430" E	23° 25' 16.185" N
P-119	81° 18' 25.407" E	23° 25' 17.213" N
P-120	81° 18' 26.435" E	23° 25' 18.035" N
P-121	81° 18' 28.542" E	23° 25' 19.731" N
P-122	81° 18' 30.585" E	23° 25' 22.191" N
P-123	81° 18' 32.170" E	23° 25' 20.920" N
P-124	81° 18' 33.857" E	23° 25' 19.567" N
P-125	81° 18' 38.282" E	23° 25' 18.228" N
P-126	81° 18' 41.788" E	23° 25' 16.951" N
P-127	81° 18' 44.295" E	23° 25' 16.038" N
P-128	81° 18' 46.845" E	23° 25' 12.916" N
P-129	81° 18' 52.587" E	23° 25' 6.866" N
P-130	81° 18' 57.739" E	23° 25' 2.638" N
P-131	81° 19' 2.058" E	23° 24' 59.278" N
P-132	81° 19' 5.404" E	23° 24' 56.675" N
P-133	81° 19' 6.816" E	23° 24' 56.188" N
P-134	81° 19' 8.459" E	23° 24' 55.621" N
P-135	81° 19' 14.108" E	23° 24' 51.695" N
P-136	81° 19' 16.934" E	23° 24' 49.611" N
P-137	81° 19' 19.688" E	23° 24' 47.139" N
P-138	81° 19' 23.771" E	23° 24' 45.539" N
P-139	81° 19' 26.381" E	23° 24' 44.502" N
P-140	81° 19' 28.478" E	23° 24' 43.669" N
P-141	81° 19' 33.762" E	23° 24' 42.215" N

Provisional Cardinal Points for NIGWANI BAKELI-A Block

POINT NO	Longitude (WGS84)	Latitude (WGS84)
P-142	81° 19' 41.061" E	23° 24' 41.864" N
P-143	81° 19' 48.584" E	23° 24' 43.997" N
P-144	81° 19' 55.215" E	23° 24' 43.568" N
P-145	81° 20' 2.977" E	23° 24' 42.822" N
P-146	81° 20' 5.256" E	23° 24' 41.898" N
P-147	81° 20' 6.356" E	23° 24' 41.453" N
P-148	81° 20' 14.584" E	23° 24' 31.531" N
P-149	81° 20' 14.096" E	23° 24' 23.763" N
P-150	81° 20' 11.443" E	23° 24' 21.472" N
P-151	81° 20' 0.520" E	23° 24' 16.973" N
P-152	81° 19' 50.339" E	23° 24' 9.529" N
P-153	81° 19' 44.893" E	23° 24' 7.315" N
P-154	81° 19' 41.773" E	23° 24' 4.663" N
P-155	81° 19' 40.372" E	23° 24' 0.051" N
P-156	81° 19' 41.151" E	23° 23' 56.615" N
P-157	81° 19' 44.229" E	23° 23' 53.262" N
P-158	81° 19' 49.958" E	23° 23' 50.268" N
P-159	81° 19' 55.423" E	23° 23' 48.923" N
P-160	81° 20' 1.534" E	23° 23' 49.403" N
P-161	81° 20' 3.754" E	23° 23' 49.619" N
P-162	81° 20' 4.920" E	23° 23' 49.732" N
P-163	81° 20' 6.961" E	23° 23' 48.931" N
P-164	81° 20' 9.130" E	23° 23' 46.438" N
P-165	81° 20' 10.992" E	23° 23' 40.692" N
P-166	81° 20' 12.778" E	23° 23' 32.782" N
P-167	81° 20' 14.834" E	23° 23' 30.335" N
P-168	81° 20' 19.005" E	23° 23' 26.084" N
P-169	81° 20' 22.207" E	23° 23' 20.712" N
P-170	81° 20' 23.589" E	23° 23' 14.451" N
P-171	81° 20' 27.174" E	23° 23' 1.821" N
P-172	81° 20' 26.831" E	23° 22' 55.909" N
P-173	81° 20' 24.588" E	23° 22' 52.741" N
P-174	81° 20' 14.025" E	23° 22' 43.259" N
P-175	81° 20' 14.022" E	23° 22' 43.256" N
P-176	81° 20' 13.796" E	23° 22' 43.245" N
P-177	81° 20' 13.800" E	23° 22' 43.248" N
P-178	81° 17' 52.967" E	23° 22' 36.434" N
P-179	81° 17' 20.899" E	23° 22' 34.882" N
P-180	81° 17' 17.246" E	23° 22' 34.705" N
P-181	81° 17' 10.135" E	23° 22' 34.361" N
P-182	81° 16' 59.610" E	23° 22' 33.852" N
P-183	81° 16' 44.738" E	23° 22' 33.132" N
P-184	81° 16' 32.575" E	23° 22' 32.544" N
P-185	81° 16' 20.174" E	23° 22' 31.944" N
P-186	81° 16' 15.140" E	23° 22' 31.700" N
P-187	81° 16' 5.000" E	23° 22' 31.210" N
P-188	81° 15' 52.293" E	23° 22' 30.595" N

Provisional Cardinal Points for NIGWANI BAKELI-A Block

POINT NO	Longitude (WGS84)	Latitude (WGS84)
P-189	81° 15' 40.538" E	23° 22' 30.026" N
P-190	81° 15' 40.000" E	23° 22' 30.004" N
P-191	81° 15' 40.000" E	23° 22' 38.430" N
P-192	81° 15' 38.378" E	23° 22' 38.442" N
P-193	81° 15' 38.991" E	23° 22' 40.058" N
P-194	81° 15' 39.145" E	23° 22' 42.320" N
P-195	81° 15' 38.529" E	23° 22' 43.142" N
P-196	81° 15' 36.730" E	23° 22' 45.352" N
P-197	81° 15' 34.366" E	23° 22' 47.408" N
P-198	81° 15' 32.567" E	23° 22' 49.926" N
P-199	81° 15' 32.156" E	23° 22' 51.057" N
P-200	81° 15' 30.763" E	23° 22' 52.962" N
P-201	81° 15' 28.159" E	23° 22' 56.183" N
P-202	81° 15' 26.959" E	23° 22' 58.547" N
P-203	81° 15' 26.685" E	23° 23' 0.158" N
P-204	81° 15' 27.439" E	23° 23' 1.665" N
P-205	81° 15' 28.501" E	23° 23' 2.933" N
P-206	81° 15' 30.557" E	23° 23' 4.852" N
P-207	81° 15' 32.990" E	23° 23' 7.079" N
P-208	81° 15' 34.018" E	23° 23' 8.278" N