

Michaelpatti Lignite Block Summary

Sr.No	Features	Details
1	Location	
	Lignite Block	Michaelpatti
	Latitude	Latitude (N):11° 05' 0" - 11° 07' 0"
	Longitude	Longitude (E):79° 15' 0" -79° 21' 0"
	Topo Sheet No.	SOI 8 of 58/M
	Lignite Field	Neyveli Lignite Field
	Villages	Alisukudi, Parukkal, Vatikudukadu Kakkapalayam.
	Tehsil/Taluka	Udayarpalayam
	District	Ariyalur
	State	Tamil Nadu
2	Connectivity with Block	
	Nearest Rail Head	Ariyalur
	Road	Michaelpatti block is named after the village and is approached by road from Udaiyarpalayam around 5km. in the north and Tiruchirappalli is around 75km. Off south-west of the block.
	Airport	Trichy
3	Area	
	Geological Block Area	14.8 Sq.km
	Forest Area	No forest as per toposheet
	Non-Forest Area	14.8 Sq.km
4	Climate and Topography	
	Average Annual Rainfall	1200 mm.
	Temperature (Min.- Max. in°C)	27 to 39
	Local Surface Drainage Channels	The topography is gently undulating generally sloping very gently towards east. No major rivers flow in the block. A seasonal channel by name Vilangudi Odai flows from west to east in the southern part of the block.
	Rivers	The Kollidam river is about 8 km in the south of the block.
5	Exploration	
	Status	Regional Exploration completed. (1600x1600m grid)
	Exploration Agency	Mineral Exploration Corporation Ltd., (MECL)
	Explored Area (as per GR)	45 Sq. km (Appx.) as per GR.
	Total Number of Boreholes with metreage	19 boreholes & 3604.00 m
	Borehole Density	2.36
	General Dip of Seams	NE-SW with dips near horizontal to SE
	General Strike Direction	General strike is ESE-WNW.
	Faults	Devoid of Fault

	Depth range of Lignite seam	100.20m to 118.60m					
6	Lignite Reserve: Inferred and Indicated Category: Sector –I : 28.069 MT						
	Sector	split-I	Split-II	Split-III	Total (MT)	%	
	I	13.828	10.497	3.744	28.069	89.69	
	II	0.378	0.307	0.303	0.988	3.16	
	III	2.238	0	0	2.238	7.15	
		16.444	10.804	4.047	31.295	100.00	
	Ratio-Wise Reserve (MT)	Grade GCV	split-I	Split-II	Split-III	Total (MT)	%
		B:2001-3000	11.482	8.216	4.046	23.744	75.87
		A:3001-4000	4.962	2.589	0	7.551	24.12
			16.444	10.805	4.046	31.295	100
7	Surface Constraints	A few small waterbodies and Nalla present in the block. Three villages falls within the block.					
8	Grade of Lignite	B (Provisional). Based on Grade wise data available in GR.					
9	Decision Support System (DSS) Analysis	The polygon touches major river(s) –Vilangudi Odai.					
10	Eco Sensitive Zone (ESZ)	About 25Km North-East of Karaiveddi Bird Sanctuary.					
11	Remarks	Regional Exploration completed (1600x1600m grid). Geological Report available.					

Note:

1. The summary has been compiled from “Geological Note on Regional Exploration for Lignite, Michaelpatti Block, Ariyalur District, Tamil Nadu-August 1996, prepared by Mineral Exploration Corporation Ltd., Nagpur.
2. The Exploration block area mentioned above is as given in the Geological report, which may vary after DGPS survey.

Disclaimer:

1. The analysis is done on Beta-version (Trial Version) of Decision Support System (DSS) of FSI/ MOEF.
2. The Decision Rules for various parameters of this DSS System are controlled by FSI.
3. CMPDI only runs this DSS to obtain the status of any block based on these Decision Rules.
4. The database of the Decision Rules is updated by FSI from time to time.
5. CMPDI does not own any responsibility for variation in the results which are based on the decision Rules of the FSI DSS in case of any updation of the database at FSI end.
6. ESZ analysis and tiger habitat/ corridor given here is based on the information available in public domain. Bidders are encouraged to verify this information and any other information additionally available.

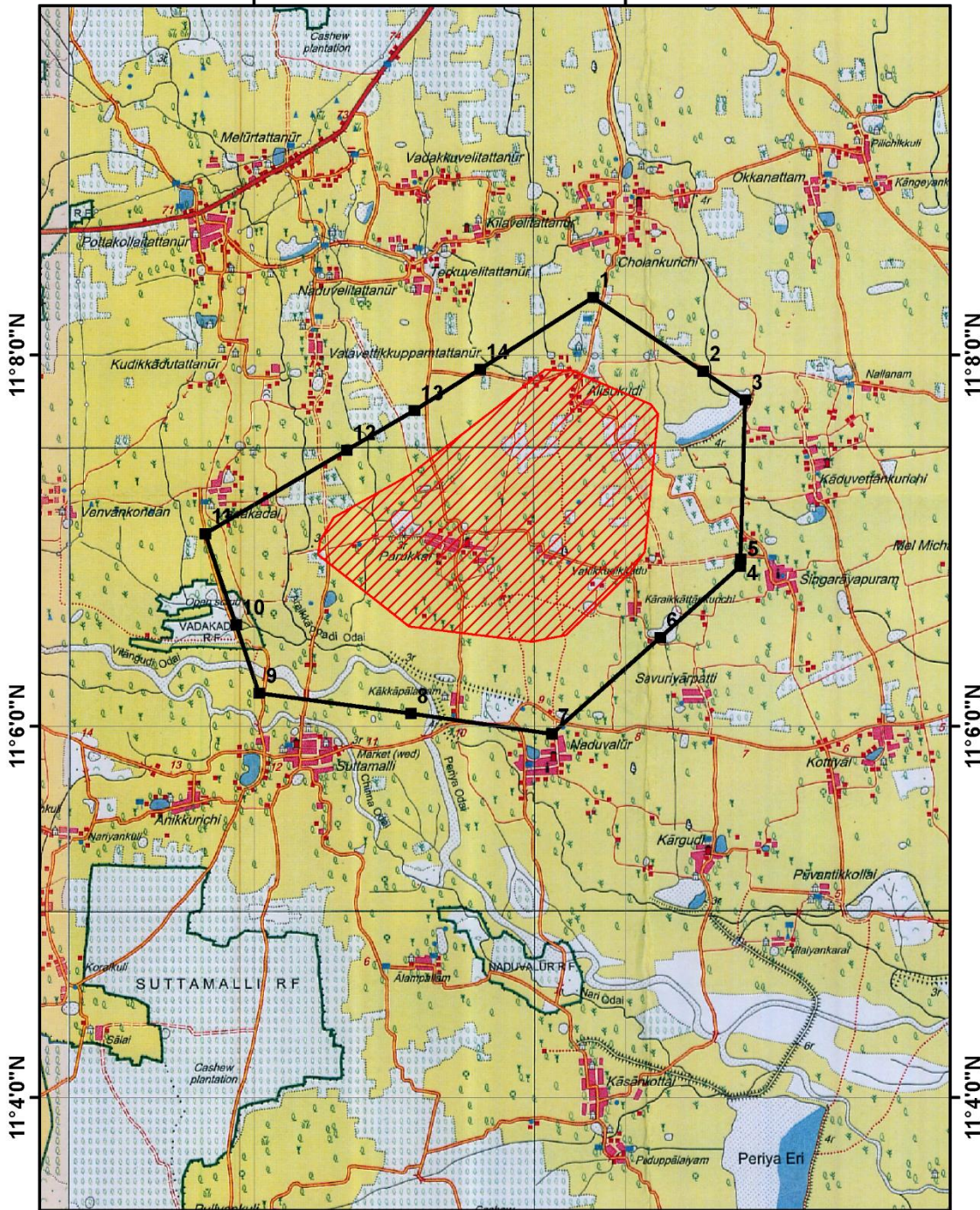
MICHAELPATTI LIGNITE BLOCK, NEYVELI LIGNITE FIELD, ARIYALUR DISTRICT, TAMILNADU

Part of SOI Toposheet 58 M/8



79°16'0"E

79°18'0"E

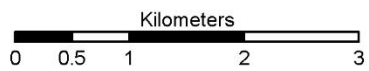


Legend

-  Exploration Block Boundary
-  Lignite Development Boundary

79°16'0"E

79°18'0"E



Provisional cardinal Points for Michaelpatti Lignite Block, Ariyalur District, Tamilnadu.

Boundary Points	Latitude (DMS)	Longitude (DMS)
1	11° 8' 18.435" N	79° 17' 49.505" E
2	11° 7' 54.601" N	79° 18' 24.969" E
3	11° 7' 45.444" N	79° 18' 38.594" E
4	11° 6' 53.911" N	79° 18' 37.147" E
5	11° 6' 51.562" N	79° 18' 37.081" E
6	11° 6' 28.527" N	79° 18' 11.178" E
7	11° 5' 57.407" N	79° 17' 36.189" E
8	11° 6' 4.109" N	79° 16' 50.548" E
9	11° 6' 10.625" N	79° 16' 1.607" E
10	11° 6' 32.646" N	79° 15' 54.095" E
11	11° 7' 2.160" N	79° 15' 44.028" E
12	11° 7' 29.093" N	79° 16' 29.868" E
13	11° 7' 41.924" N	79° 16' 51.709" E
14	11° 7' 55.319" N	79° 17' 12.911" E