

## MAIKI SOUTH BLOCK SUMMARY

### PART A

Sr. No.	Features	Details
<b>1.</b>	<b>Location</b>	
	Coal Block	Maiki South
	Latitude	23° 20' 02" N-23° 21' 39" N (Provisional)
	Longitude	81° 23' 19" E-81° 25' 51" (Provisional)
	Topo Sheet No.	64 E/7
	Coalfield	Sohagpur
	Villages	Maiki Village
	Tehsil/Taluka	Sohagpur
	District	Shahdol
	State	Madhya Pradesh
<b>2.</b>	<b>Connectivity with Block</b>	
	Nearest Rail Head	Shahdol is the nearest railway station, situated in Bilaspur - Katni section of SE Railway.
	Road	The area is well connected by road with Shahdol, District Headquarter located 3km. towards west. Fair weather jeepable roads also interconnect the small villages.
	Airport	
<b>3.</b>	<b>Area</b>	
	Geological Block Area	10.45 sq. km (As per shape file. Refer note below)
	Forest Area	0.02 sq km.
	Non-Forest Area	10.43
<b>4.</b>	<b>Climate and Topography</b>	
	Average Annual Rainfall	The mean annual average rainfall of Shahdol district is recorded as 888.10 mm
	Temperature (Min. — Max.)	The average mean maximum temperature of 38°C was recorded during the month of May and average mean minimum temperature of 15 °C during the month of January.
	Local Surface Drainage Channels	Northerly flowing Patparha nala in the central part and north-westerly flowing Garaghat nala in the north-easternmost part of the block forms the main drainage of the block.
	<b>Rivers</b>	
<b>5.</b>	<b>Exploration</b>	
	Status	Regionally Explored

	Exploration Agency	GSI				
	Total Number of Boreholes with meterage	9 boreholes & 5185.50 m				
	Borehole Density	0.86 boreholes per sq km				
	General Dip of Seams	The beds gently dip towards northeast varying from 1° to 2° from east to west in the northern part of the block and towards east varying from 1° to 2° in the southern part of the block.				
	General Strike Direction	Beds are striking NW-SE in the northern part of the block and the beds are striking N-S in the southern part of the block.				
	Faults	NA				
<b>6.</b>	<b>Coal Seams and Reserves</b>					
	Number of Coal Seams	<b>6</b>				
	<b>Coal Seams</b>	<b>Thickness Range (m)</b>	<b>Depth Range (m)</b>	<b>Geological Reserve (Mt) (Indicated)</b>		<b>Grade</b>
				(Thick seams)	(Thin seams)	
	Raniganj Seams	0.62 – 2.31	69.27– 120.30	8.904	4.09	G14-G6
	IV	1.10 - 1.85	368.59-449.93	20.332		G6-G1
	III A	1.49 – 4.55	466.22-516.20	43.65	5.03	G10-G4
	III B	0.30 – 0.90	473.52-512.50	1.442	1.94	G14-G4
	I	0.16 - 0.60			0.72	G3-G1
	L1	0.46 – 1.25	528.45-578.78		2.07	G12-G4
	<b>TOTAL</b>			<b>74.33</b>	<b>13.86</b>	
	<b>Grand Total</b>			<b>88.2</b>		
	<b>Thick Seams</b>	(Seam thickness 0.90m & above for Grade G1-G6 and Seam thickness 1.20m & above for Grade G7-G14)				
	<b>Thin Seams</b>	(Seam thickness 0.50m & <0.90m for Grade G1-G6 & Seam thickness 0.50m & <1.20m for Grade. G7-G14)				
<b>7.</b>	<b>Surface Constraints</b>	Maiki village, Patparha nala, Garaghat nala.				
<b>8.</b>	<b>Grade of coal</b>	G7 (Provisional), Based on weighted average grade of grade-wise data available in Regional GR of Maiki Sector by GSI.				
<b>9.</b>	<b>Decision Support System (DSS) Analysis</b>	Wildlife info: The polygon touches Wildlife Habitat(s).-Sloth Bear, Dhole				

<b>10.</b>	<b>Eco Sensitive Zone (ESZ)</b>	Approx. 16.5 km from the boundary of the tiger corridor between Bandhavgarh and Sanjay Gandhi NP. Approx. 18 km from the boundary of the tiger corridor between Bandhavgarh and Achanakmar. Approx. 22.5 km from the boundary of ESZ of Bandhavgarh.
------------	---------------------------------	--

**Note:**

1. The summary has been compiled from Final Report on Regional Exploration for coal in Maiki block, Sohagpur coalfield, District Shahdol, M.P. GSI, 2010.
2. Grade mentioned above in the tables are tentative based on UHV-GCV grade conversions.

**Disclaimer:**

1. The analysis is done on Beta-version (Trial Version) of Decision Support System (DSS) of FSI / MOEF.
2. The Decision Rules for various parameters of this DSS System are controlled by FSI.
3. CMPDI only runs this DSS to obtain the status of any block based on these Decision Rules.
4. The database of the Decision Rules is updated by FSI from time to time.
5. CMPDI does not own any responsibility for variation in the results which are based on the Decision Rules of the FSI DSS in case of any updation of the database at FSI end.
6. ESZ analysis and tiger habitat/ corridor given here is based on the information available in public domain. Bidders are encouraged to verify this information and any other information additionally available.

23°20'0"N

23°21'0"N

81°23'0"E

81°24'0"E

81°25'0"E

81°26'0"E

81°23'0"E

81°24'0"E

81°25'0"E

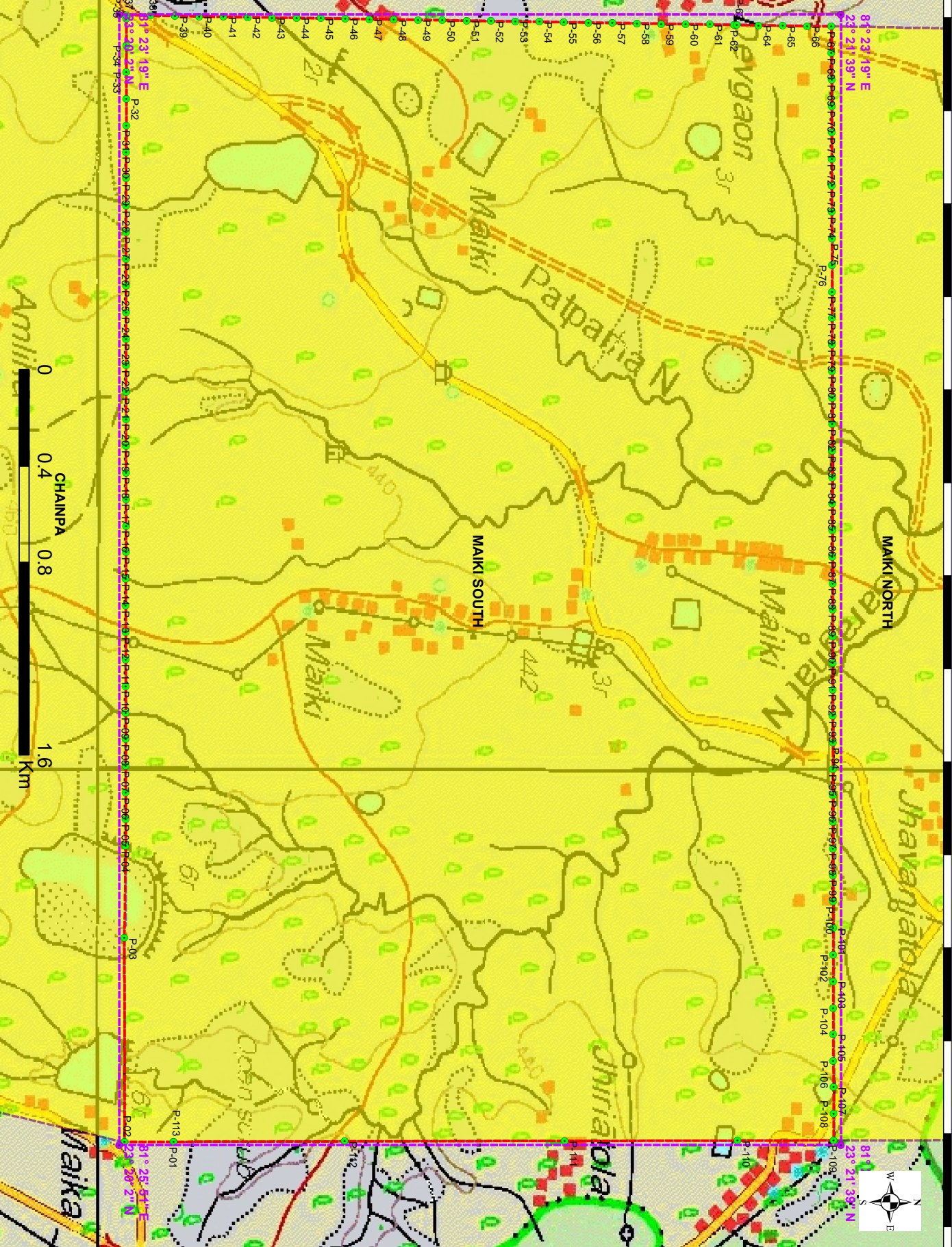
81°26'0"E

**Legend**

- Bounding Points
- Bounding Envelope
- Cardinal Points
- Block Boundary

**OCBIS\_BLOCKS Category**

- CIL
- ADDITIONAL CIL
- CMSP
- MMDR
- SCCL



Maiki South Block, Sohagpur Coalfield

FOR INTERNAL/RESTRICTED USE ONLY

23°20'0"N

23°21'0"N

81°26'0"E

**Provisional Cardinal Points for MAIKI SOUTH Block**

POINT NO	Longitude (WGS84)	Latitude (WGS84)
P-1	81° 25' 50.576" E	23° 20' 9.282" N
P-2	81° 25' 50.589" E	23° 20' 2.710" N
P-3	81° 25' 23.179" E	23° 20' 2.662" N
P-4	81° 25' 10.851" E	23° 20' 2.850" N
P-5	81° 25' 7.262" E	23° 20' 2.853" N
P-6	81° 25' 3.673" E	23° 20' 2.856" N
P-7	81° 25' 0.083" E	23° 20' 2.859" N
P-8	81° 24' 56.494" E	23° 20' 2.862" N
P-9	81° 24' 52.905" E	23° 20' 2.865" N
P-10	81° 24' 49.316" E	23° 20' 2.868" N
P-11	81° 24' 45.727" E	23° 20' 2.871" N
P-12	81° 24' 42.137" E	23° 20' 2.873" N
P-13	81° 24' 38.548" E	23° 20' 2.876" N
P-14	81° 24' 34.959" E	23° 20' 2.879" N
P-15	81° 24' 31.370" E	23° 20' 2.882" N
P-16	81° 24' 27.780" E	23° 20' 2.885" N
P-17	81° 24' 24.191" E	23° 20' 2.887" N
P-18	81° 24' 20.602" E	23° 20' 2.890" N
P-19	81° 24' 17.013" E	23° 20' 2.893" N
P-20	81° 24' 13.423" E	23° 20' 2.896" N
P-21	81° 24' 9.834" E	23° 20' 2.898" N
P-22	81° 24' 6.245" E	23° 20' 2.901" N
P-23	81° 24' 2.656" E	23° 20' 2.904" N
P-24	81° 23' 59.066" E	23° 20' 2.906" N
P-25	81° 23' 55.477" E	23° 20' 2.909" N
P-26	81° 23' 51.888" E	23° 20' 2.911" N
P-27	81° 23' 48.299" E	23° 20' 2.914" N
P-28	81° 23' 44.709" E	23° 20' 2.916" N
P-29	81° 23' 41.120" E	23° 20' 2.919" N
P-30	81° 23' 37.531" E	23° 20' 2.921" N
P-31	81° 23' 33.942" E	23° 20' 2.924" N
P-32	81° 23' 30.352" E	23° 20' 2.926" N
P-33	81° 23' 26.763" E	23° 20' 2.928" N
P-34	81° 23' 23.174" E	23° 20' 2.931" N
P-35	81° 23' 19.568" E	23° 20' 2.926" N
P-36	81° 23' 19.585" E	23° 20' 2.933" N
P-37	81° 23' 19.139" E	23° 20' 2.933" N
P-38	81° 23' 19.191" E	23° 20' 6.202" N
P-39	81° 23' 19.243" E	23° 20' 9.471" N
P-40	81° 23' 19.295" E	23° 20' 12.739" N
P-41	81° 23' 19.348" E	23° 20' 16.008" N
P-42	81° 23' 19.400" E	23° 20' 19.277" N
P-43	81° 23' 19.452" E	23° 20' 22.545" N
P-44	81° 23' 19.504" E	23° 20' 25.814" N
P-45	81° 23' 19.557" E	23° 20' 29.083" N
P-46	81° 23' 19.609" E	23° 20' 32.351" N
P-47	81° 23' 19.661" E	23° 20' 35.620" N

**Provisional Cardinal Points for MAIKI SOUTH Block**

POINT NO	Longitude (WGS84)	Latitude (WGS84)
P-48	81° 23' 19.713" E	23° 20' 38.889" N
P-49	81° 23' 19.765" E	23° 20' 42.157" N
P-50	81° 23' 19.818" E	23° 20' 45.426" N
P-51	81° 23' 19.870" E	23° 20' 48.695" N
P-52	81° 23' 19.922" E	23° 20' 51.963" N
P-53	81° 23' 19.974" E	23° 20' 55.232" N
P-54	81° 23' 20.027" E	23° 20' 58.501" N
P-55	81° 23' 20.079" E	23° 21' 1.769" N
P-56	81° 23' 20.131" E	23° 21' 5.038" N
P-57	81° 23' 20.183" E	23° 21' 8.307" N
P-58	81° 23' 20.235" E	23° 21' 11.575" N
P-59	81° 23' 20.288" E	23° 21' 14.844" N
P-60	81° 23' 20.340" E	23° 21' 18.113" N
P-61	81° 23' 20.392" E	23° 21' 21.381" N
P-62	81° 23' 20.444" E	23° 21' 24.650" N
P-63	81° 23' 20.450" E	23° 21' 25.015" N
P-64	81° 23' 20.497" E	23° 21' 27.919" N
P-65	81° 23' 20.549" E	23° 21' 31.187" N
P-66	81° 23' 20.601" E	23° 21' 34.456" N
P-67	81° 23' 20.653" E	23° 21' 37.725" N
P-68	81° 23' 24.219" E	23° 21' 37.732" N
P-69	81° 23' 27.784" E	23° 21' 37.739" N
P-70	81° 23' 31.349" E	23° 21' 37.746" N
P-71	81° 23' 34.914" E	23° 21' 37.753" N
P-72	81° 23' 38.480" E	23° 21' 37.760" N
P-73	81° 23' 42.045" E	23° 21' 37.767" N
P-74	81° 23' 45.610" E	23° 21' 37.774" N
P-75	81° 23' 49.176" E	23° 21' 37.781" N
P-76	81° 23' 52.741" E	23° 21' 37.788" N
P-77	81° 23' 56.306" E	23° 21' 37.795" N
P-78	81° 23' 59.871" E	23° 21' 37.802" N
P-79	81° 24' 3.437" E	23° 21' 37.808" N
P-80	81° 24' 7.002" E	23° 21' 37.815" N
P-81	81° 24' 10.567" E	23° 21' 37.822" N
P-82	81° 24' 14.132" E	23° 21' 37.829" N
P-83	81° 24' 17.698" E	23° 21' 37.836" N
P-84	81° 24' 21.263" E	23° 21' 37.842" N
P-85	81° 24' 24.828" E	23° 21' 37.849" N
P-86	81° 24' 28.394" E	23° 21' 37.856" N
P-87	81° 24' 31.959" E	23° 21' 37.863" N
P-88	81° 24' 35.524" E	23° 21' 37.869" N
P-89	81° 24' 39.090" E	23° 21' 37.876" N
P-90	81° 24' 42.655" E	23° 21' 37.882" N
P-91	81° 24' 46.220" E	23° 21' 37.889" N
P-92	81° 24' 49.785" E	23° 21' 37.896" N
P-93	81° 24' 53.351" E	23° 21' 37.902" N
P-94	81° 24' 56.916" E	23° 21' 37.909" N

**Provisional Cardinal Points for MAIKI SOUTH Block**

POINT NO	Longitude (WGS84)	Latitude (WGS84)
P-95	81° 25' 0.481" E	23° 21' 37.915" N
P-96	81° 25' 4.047" E	23° 21' 37.922" N
P-97	81° 25' 7.612" E	23° 21' 37.928" N
P-98	81° 25' 11.177" E	23° 21' 37.935" N
P-99	81° 25' 14.742" E	23° 21' 37.941" N
P-100	81° 25' 18.308" E	23° 21' 37.947" N
P-101	81° 25' 21.873" E	23° 21' 37.954" N
P-102	81° 25' 25.438" E	23° 21' 37.960" N
P-103	81° 25' 29.004" E	23° 21' 37.967" N
P-104	81° 25' 32.569" E	23° 21' 37.973" N
P-105	81° 25' 36.134" E	23° 21' 37.979" N
P-106	81° 25' 39.699" E	23° 21' 37.985" N
P-107	81° 25' 43.265" E	23° 21' 37.992" N
P-108	81° 25' 46.830" E	23° 21' 37.998" N
P-109	81° 25' 50.395" E	23° 21' 38.004" N
P-110	81° 25' 50.422" E	23° 21' 25.098" N
P-111	81° 25' 50.469" E	23° 21' 1.858" N
P-112	81° 25' 50.529" E	23° 20' 32.284" N