

LATEHAR COAL BLOCK SUMMARY

PART A

Sr. No	Features	Details
1. Location		
	Coal Block	Latehar
	Latitude	23° 43' 57" N- 23° 46' 4" N (Provisional)
	Longitude	84° 26' 55" E- 84° 29' 20" E (Provisional)
	Topo Sheet No.	73 A/5
	Coalfield	Auranga
	Villages	Jalta & Parsahi
	Tehsil/Taluka	Latehar
	District	Latehar
	State	Jharkhand
2. Connectivity with Block		
	Nearest Rail Head	The area is well connected with the rest of the country by Gomoh–Barkakana–Dehri-On-Son loop line of the Eastern Railway. Latehar railway station, about 1km south of the area, is the nearest railhead.
	Road	The area is connected by Ranchi–Daltonganj State Highway and is situated about 115km from Ranchi and 90km from Daltonganj, which is the headquarter of the Palamau district. The area is negotiable by two all-weather unmetalled roads which connect the main State Highway No. 48.
	Airport	Ranchi, located at a distance of about 113km.
3. Area		
	Geological Block Area	10.43 sq.km. (As per shape file) (Refer Note No. 3)
	Forest Area	Approx. 10% (As per FSI Map)
	Non-Forest Area	
4. Climate and Topography		
	Average Annual Rainfall	-
	Temperature (Min. — Max.)	-
	Local Surface Drainage Channels	Auranga river flows from east to west along the southern margin and from south to north along the western margin of the area and forms the southern and western boundaries respectively of the Latehar block. The Auranga river, along with a number of small nalas flowing from north to south and east to west and joining it in the south and west, constitute the main drainage pattern of the area.
	Rivers	Auranga
5. Exploration		

	Status	Regionally Explored			
	Exploration Agency	GSI			
	Total Number of Boreholes with meterage	15 Boreholes; 5231.00 m			
	Borehole Density	Approx. 1.5 Boreholes/sq.km.			
	General Dip of Seams	The dip of the beds varies from 7° to 20° but locally near the fault planes the beds are tilted to as high as 60°.			
	General Strike Direction	The beds strike in northwest-southeast direction with north-easterly dip except in the southeastern part, where the strike of strata is E-W with northerly dip. Locally near the faults, strike and dip directions of beds are found to vary considerably.			
6.	Coal Seams & Reserve				
	Coal Seam Zones	Thickness Range (m)	Depth Range (m)	Geological Reserve (MT) (Indicated)	Grade
	E	0.70-11.55			D-G
	D	4.30-14.00		2.69	D-G
	C	3.40-30.10		5.06	D-G
	B	6.05-41.85		13.34	D-G
	A	10.80-43.80		0.95	C-F
		Total		22.04	
7.	Surface Constraints	Auranga river in the western and southern boundary.			
8.	Grade of the block	G11 (Provisional) based on weighted average grade as per data available in Regional GR.			
9.	Decision Support System (DSS) Analysis	Hydrology: Polygon touches Auranga River.			
10.	Eco Sensitive Zone (ESZ) Analysis	Western boundary is approx. 1.2 km from the boundary of ESZ of Palamu and approx. 4 km from the tiger corridor connecting Palamu and Lawalong. NW boundary is approx. 22 kms from the boundary of ESZ of Lawalong.			

PART B

Sr. No.	Features	Details
1.	Previous Allocation	
	Name and Address of Allocatee	Jharkhand State Mineral Development Corporation
2.	Target Capacity as per Mining Plan	Mining Plan not available
3.	Status of Clearances/Approvals	
	Mining Plan/ Mine Closure Plan	NA
	Forest Clearance	
	Environmental Clearance	
	Mining Lease	
	Land Acquisition	
No. of PAFs as per Mining Plan/ Mine Closure Plan		

4.	Surface Infrastructure already built, if any.	--
----	---	----

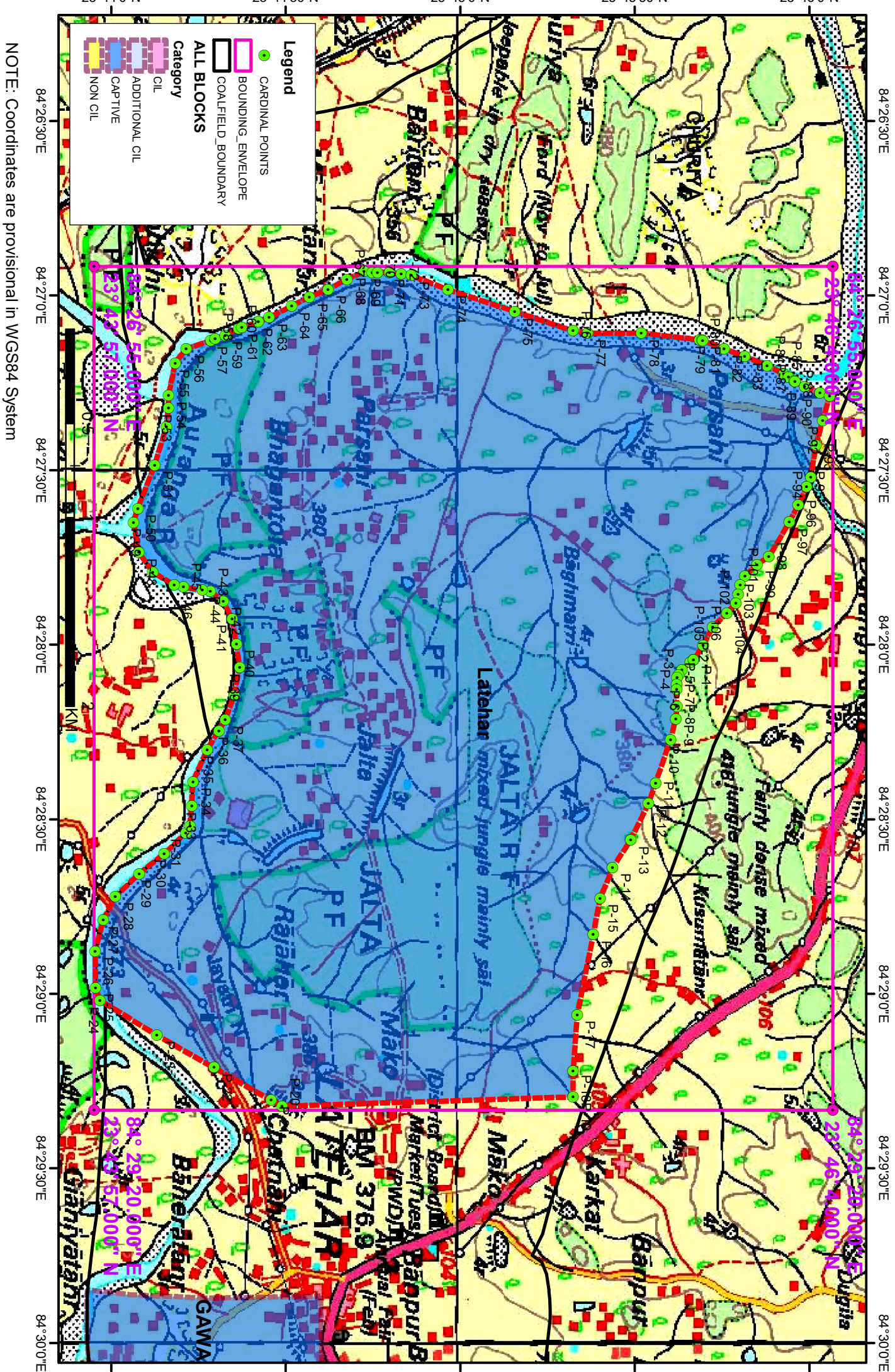
Note:

1. The reserve is as per GSI Regional GR.
2. The boundary of the block has been taken from Regional GR of GSI after conversion to WGS84 system by feature matching. The block boundary is provisional and the cardinal points, bounding co-ordinates are approximate.
3. There is difference in area in the shape file and GR. Area in the shape file is based on feature matching of plan of the block as given in the GR. So, the area is tentative and field DGPS survey is required to ascertain the exact area.

Disclaimer:

1. The analysis is done on Beta-version (Trial Version) of Decision Support System (DSS) of FSI / MOEF.
2. The Decision Rules for various parameters of this DSS System are controlled by FSI.
3. CMPDI only runs this DSS to obtain the status of any block based on these Decision Rules.
4. The database of the Decision Rules is updated by FSI from time to time.
5. CMPDI does not own any responsibility for variation in the results which are based on the Decision Rules of the FSI DSS in case of any updation of the database at FSI end.
6. ESZ analysis and tiger habitat/ corridor given here is based on the information available in public domain. Bidders are encouraged to verify this information and any other information additionally available.

Latehar Block, Auranga Coalfield



Legend

- CARDINAL POINTS
- BOUNDING_ENVELOPE
- COALFIELD_BOUNDARY

ALL BLOCKS

Category

- CIL
- ADDITIONAL_CIL
- CAPTIVE
- NON_CIL

NOTE: Coordinates are provisional in WGS84 System

23°44'0"N 23°44'30"N 23°45'0"N 23°45'30"N 23°46'0"N

84°26'30"E 84°27'0"E 84°27'30"E 84°28'0"E 84°28'30"E 84°29'0"E 84°29'30"E 84°30'0"E

23°44'0"N 23°44'30"N 23°45'0"N 23°45'30"N 23°46'0"N

84°26'30"E 84°27'0"E 84°27'30"E 84°28'0"E 84°28'30"E 84°29'0"E 84°29'30"E 84°30'0"E

Provisional Cardinal Points for Latehar Block

POINT NO	Longitude (WGS84)	Latitude (WGS84)
P-1	84° 28' 2.618" E	23° 45' 40.049" N
P-2	84° 28' 3.056" E	23° 45' 39.478" N
P-3	84° 28' 4.359" E	23° 45' 38.066" N
P-4	84° 28' 5.211" E	23° 45' 37.458" N
P-5	84° 28' 5.591" E	23° 45' 37.188" N
P-6	84° 28' 6.821" E	23° 45' 37.162" N
P-7	84° 28' 7.677" E	23° 45' 37.128" N
P-8	84° 28' 10.624" E	23° 45' 37.196" N
P-9	84° 28' 12.817" E	23° 45' 36.991" N
P-10	84° 28' 16.312" E	23° 45' 36.100" N
P-11	84° 28' 23.782" E	23° 45' 33.530" N
P-12	84° 28' 27.277" E	23° 45' 32.331" N
P-13	84° 28' 33.581" E	23° 45' 29.247" N
P-14	84° 28' 38.310" E	23° 45' 26.163" N
P-15	84° 28' 43.586" E	23° 45' 23.970" N
P-16	84° 28' 49.822" E	23° 45' 22.805" N
P-17	84° 29' 3.597" E	23° 45' 20.064" N
P-18	84° 29' 13.191" E	23° 45' 19.379" N
P-19	84° 29' 17.714" E	23° 45' 19.379" N
P-20	84° 29' 19.290" E	23° 44' 29.284" N
P-21	84° 29' 18.260" E	23° 44' 27.465" N
P-22	84° 29' 12.677" E	23° 44' 17.600" N
P-23	84° 29' 7.023" E	23° 44' 7.766" N
P-24	84° 29' 1.130" E	23° 43' 58.035" N
P-25	84° 28' 58.937" E	23° 43' 57.282" N
P-26	84° 28' 52.701" E	23° 43' 57.213" N
P-27	84° 28' 47.355" E	23° 43' 58.584" N
P-28	84° 28' 43.312" E	23° 44' 0.639" N
P-29	84° 28' 39.338" E	23° 44' 4.751" N
P-30	84° 28' 35.911" E	23° 44' 9.068" N
P-31	84° 28' 32.348" E	23° 44' 12.769" N
P-32	84° 28' 31.114" E	23° 44' 13.523" N
P-33	84° 28' 27.756" E	23° 44' 13.797" N
P-34	84° 28' 23.576" E	23° 44' 14.003" N
P-35	84° 28' 18.025" E	23° 44' 16.470" N
P-36	84° 28' 14.813" E	23° 44' 18.431" N
P-37	84° 28' 12.928" E	23° 44' 19.562" N
P-38	84° 28' 8.748" E	23° 44' 21.070" N
P-39	84° 28' 3.883" E	23° 44' 22.029" N
P-40	84° 27' 59.839" E	23° 44' 21.481" N
P-41	84° 27' 55.522" E	23° 44' 20.727" N
P-42	84° 27' 52.507" E	23° 44' 19.219" N
P-43	84° 27' 50.862" E	23° 44' 17.026" N
P-44	84° 27' 50.635" E	23° 44' 15.613" N
P-45	84° 27' 50.108" E	23° 44' 12.332" N
P-46	84° 27' 49.766" E	23° 44' 10.790" N
P-47	84° 27' 47.504" E	23° 44' 7.090" N

Provisional Cardinal Points for Latehar Block

POINT NO	Longitude (WGS84)	Latitude (WGS84)
P-48	84° 27' 44.146" E	23° 44' 4.691" N
P-49	84° 27' 39.007" E	23° 44' 3.800" N
P-50	84° 27' 36.608" E	23° 44' 4.554" N
P-51	84° 27' 29.139" E	23° 44' 7.432" N
P-52	84° 27' 22.560" E	23° 44' 9.420" N
P-53	84° 27' 19.313" E	23° 44' 9.784" N
P-54	84° 27' 17.172" E	23° 44' 9.805" N
P-55	84° 27' 11.647" E	23° 44' 10.962" N
P-56	84° 27' 9.163" E	23° 44' 12.846" N
P-57	84° 27' 7.724" E	23° 44' 17.060" N
P-58	84° 27' 7.454" E	23° 44' 17.849" N
P-59	84° 27' 6.812" E	23° 44' 19.534" N
P-60	84° 27' 5.726" E	23° 44' 21.845" N
P-61	84° 27' 5.469" E	23° 44' 22.384" N
P-62	84° 27' 4.544" E	23° 44' 25.263" N
P-63	84° 27' 3.773" E	23° 44' 27.113" N
P-64	84° 27' 1.820" E	23° 44' 30.968" N
P-65	84° 27' 0.278" E	23° 44' 34.000" N
P-66	84° 26' 58.993" E	23° 44' 37.187" N
P-67	84° 26' 57.194" E	23° 44' 40.425" N
P-68	84° 26' 55.910" E	23° 44' 43.457" N
P-69	84° 26' 56.000" E	23° 44' 44.789" N
P-70	84° 26' 56.064" E	23° 44' 45.718" N
P-71	84° 26' 56.115" E	23° 44' 47.826" N
P-72	84° 26' 56.329" E	23° 44' 49.822" N
P-73	84° 26' 56.543" E	23° 44' 51.535" N
P-74	84° 26' 59.006" E	23° 44' 57.852" N
P-75	84° 27' 2.768" E	23° 45' 9.308" N
P-76	84° 27' 6.073" E	23° 45' 19.374" N
P-77	84° 27' 6.501" E	23° 45' 21.837" N
P-78	84° 27' 6.453" E	23° 45' 31.036" N
P-79	84° 27' 7.629" E	23° 45' 41.107" N
P-80	84° 27' 7.679" E	23° 45' 41.539" N
P-81	84° 27' 7.714" E	23° 45' 41.625" N
P-82	84° 27' 9.178" E	23° 45' 45.287" N
P-83	84° 27' 10.463" E	23° 45' 48.820" N
P-84	84° 27' 12.043" E	23° 45' 52.730" N
P-85	84° 27' 13.493" E	23° 45' 55.590" N
P-86	84° 27' 14.050" E	23° 45' 56.390" N
P-87	84° 27' 14.715" E	23° 45' 57.346" N
P-88	84° 27' 14.783" E	23° 45' 57.491" N
P-89	84° 27' 15.606" E	23° 45' 59.136" N
P-90	84° 27' 16.736" E	23° 46' 1.774" N
P-91	84° 27' 17.298" E	23° 46' 3.433" N
P-92	84° 27' 21.507" E	23° 46' 2.273" N
P-93	84° 27' 25.715" E	23° 46' 1.113" N
P-94	84° 27' 31.232" E	23° 46' 0.222" N

Provisional Cardinal Points for Latehar Block

POINT NO	Longitude (WGS84)	Latitude (WGS84)
P-95	84° 27' 32.866" E	23° 45' 59.491" N
P-96	84° 27' 36.020" E	23° 45' 58.080" N
P-97	84° 27' 38.933" E	23° 45' 56.538" N
P-98	84° 27' 44.929" E	23° 45' 52.983" N
P-99	84° 27' 46.214" E	23° 45' 50.970" N
P-100	84° 27' 48.227" E	23° 45' 48.914" N
P-101	84° 27' 49.726" E	23° 45' 48.101" N
P-102	84° 27' 51.396" E	23° 45' 47.715" N
P-103	84° 27' 52.852" E	23° 45' 47.330" N
P-104	84° 27' 54.608" E	23° 45' 45.831" N
P-105	84° 27' 56.921" E	23° 45' 43.347" N
P-106	84° 28' 0.134" E	23° 45' 41.719" N