

**KOYAGUDEM BLOCK-III BLOCK SUMMARY  
PART A**

Sr. No.	Features	Details
<b>1.</b>	<b>Location</b>	
	Coal Block	<b>KOYAGUDEM BLOCK-III</b>
	Latitude	17° 35'46" N-17° 38'36" N (Provisional)
	Longitude	80° 29' 24" E-80° 31' 17" E (Provisional)
	Topo Sheet No.	E-44O6(65 C/6) and E-44O10(65C/10)
	Coalfield	GODAVARI VALLEY COAL FIELD
	Villages	Ippala Thanda
	Tehsil/Taluka	Tekulapalli
	District	Bhadradi Kothagudem
	State	TELANGANA
<b>2.</b>	<b>Connectivity with Block</b>	
	Nearest Rail Head	The nearest railhead is Betampudi Railway station located at about 10km in South of the block on Dornakal – Kothagudem branch line of S.C.Railway.
	Road	The Koyagudem OC-III Block is connected by a metalled road to Kothagudem and Yellandu PWD road at Mutyalampadu crossroad. Block is accessible by 23km-asphalt road from Kothagudem and 25Km from Yellandu Town
	Airport	Hyderabad and Gannavaram
<b>3.</b>	<b>Area</b>	
	Geological Block Area	8.32 Sq.Km
	Forest Area	Out of 832 Ha of Block area 312 Ha is Covered by Chatakonda reserve forest.
	Non-Forest Area	620 Ha
<b>4.</b>	<b>Climate and Topography</b>	
	Average Annual Rainfall	The mean annual rainfall is 1111.20 mm.
	Temperature (Min. — Max.)	9.1° - 48.6°C
	Local Surface Drainage Channels	The block area falls in the catchment of Murredu vagu. The drainage is moderately developed in the block. The drainage density of the block area is about 1.74 km/sq.km
	Rivers	No

<b>5.</b>	<b>Exploration</b>				
	Status	Detailed exploration is completed in the year 2014			
	Exploration Agency	SCCL			
	Total Number of Boreholes with meterage	Boreholes & m 127 BH /23153.57m			
	Borehole Density	Approx.boreholes per sq km : 15.26			
	General Dip of Seams	In Eastern part seams dip towards Easterly and south easterly. While in Western part seams dip SW and Southernly. In central part it appears as flattened with very gentler gradient			
	General Strike Direction	The general trend of the coal seams is North -South and NNE-SSW in Eastern part of the block. While in Western part trend of the coal seam NW –SE and E-W.			
	Faults	A total of 23 faults have been deciphered in the block with throw ranging from 5m to 1000m+ (Boundary fault).			
<b>6.</b>	<b>Coal Seams &amp; Reserve</b>				
	Coal Seams	Thickness Range (m)	Depth Range (m)	Resources (mt)	Grade
	Queen Seam	4.15 -15.23	18.08 – 255.90	119.60	G12-G17
	<b>Total</b>			<b>119.60</b>	
<b>7.</b>	<b>Surface Constraints</b>				
	Ippala thanda falls in south eastern part of the block and Lachagudem, Dantala thanda, Babuji thanda and Rollapadu are nearby / adjoining villages. The block is partly about 3.12 sq.km is covered by Chatakonda reserved forest in the north part of the block is the major surface constraints.				
<b>8.</b>	<b>Grade of coal</b>				
	G-13 (Provisional) based on weighted average grade as per grade-wise data available in Mining plan				
<b>9.</b>	<b>Decision Support System (DSS) Analysis</b>				
<b>10.</b>	<b>Eco Sensitive Zone (ESZ)</b>				
	The boundary of Kinnerasani Eco sensitive buffer zone forms the part of eastern boundary of the block.				

#### PART B

Sr. No.	Features	Details
1	PRC as per Mining Plan	4.8 Mty

**Note:**

1. The summary has been compiled from “**GEOLOGICAL REPORT ON KOYAGUDEM BLOCK – III**”, **LINGAL-KOYAGUDEM KOAL BELT OF GVCF, BHADRADRI KOTHAGUDEM DIST. TELANGANA.**
2. The block boundary is provisional and the cardinal points, bounding co-ordinates are approximate. Field DGPS survey is required to ascertain the exact area.
3. The above information has been provided from M/s SCCL

**Disclaimer:**

1. The analysis is done on Beta-version (Trial Version) of Decision Support System (DSS) of FSI / MOEF.
2. The Decision Rules for various parameters of this DSS System are controlled by FSI.
3. CMPDI only runs this DSS to obtain the status of any block based on these Decision Rules.
4. The database of the Decision Rules is updated by FSI from time to time.
5. CMPDI does not own any responsibility for variation in the results which are based on the Decision Rules of the FSI DSS in case of any updation of the database at FSI end.
6. ESZ analysis and tiger habitat/ corridor given here is based on the information available in public domain. Bidders are encouraged to verify this information and any other information additionally available.

80°28'0"E

80°29'0"E

80°30'0"E

80°31'0"E

80°32'0"E

17°41'0"N

17°41'0"N

17°40'0"N

17°40'0"N

17°39'0"N

17°39'0"N

17°38'0"N

17°38'0"N

17°37'0"N

17°37'0"N

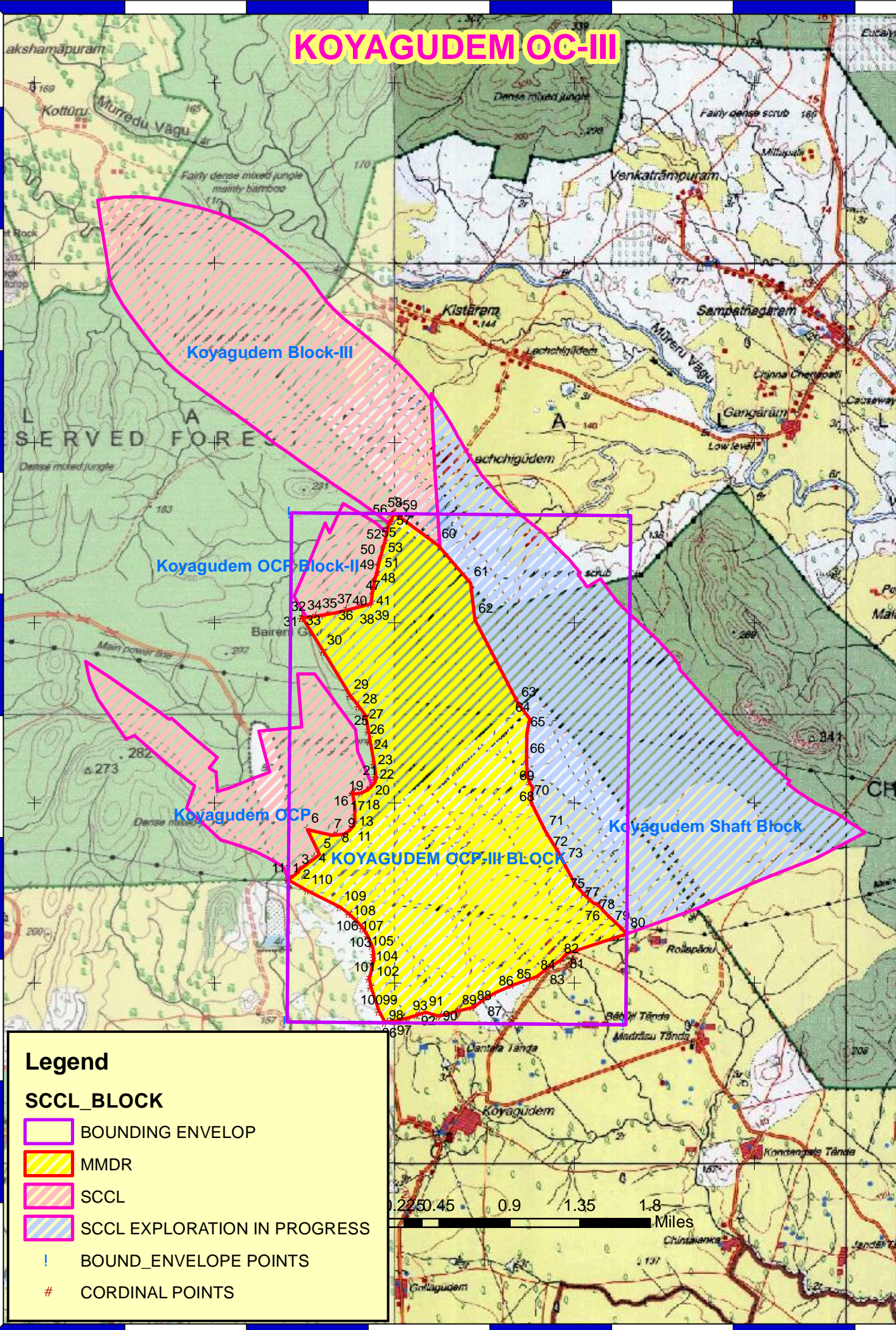
17°36'0"N

17°36'0"N

17°35'0"N







17°35'0"N

# KOYAGUDEM OC-III



## Legend

### SCCL\_BLOCK

-  BOUNDING ENVELOP
-  MMDR
-  SCCL
-  SCCL EXPLORATION IN PROGRESS
-  BOUND\_ENVELOPE POINTS
-  CORDINAL POINTS

80°28'0"E

80°29'0"E

80°30'0"E

80°31'0"E

80°32'0"E

**Provisional Cardinal Points for Koyagudem\_OC-III**

<b>S.NO</b>	<b>LATITUDE</b>	<b>LONGITUDE</b>
1	17°36'34.011183"N	80°29'24.638862"E
2	17°36'30.373695"N	80°29'31.135561"E
3	17°36'24.882487"N	80°29'41.906988"E
4	17°36'22.568257"N	80°29'44.960366"E
5	17°36'19.887897"N	80°29'47.764652"E
6	17°36'17.832531"N	80°29'49.48068"E
7	17°36'15.383741"N	80°29'51.136916"E
8	17°36'11.987167"N	80°29'52.639209"E
9	17°36'9.343372"N	80°29'53.181955"E
10	17°36'6.385931"N	80°29'52.875556"E
11	17°36'1.15872"N	80°29'51.721818"E
12	17°35'58.114863"N	80°29'52.257866"E
13	17°35'50.1457"N	80°29'54.965895"E
14	17°35'46.386065"N	80°29'56.940138"E
15	17°35'47.010994"N	80°29'59.633384"E
16	17°35'46.977968"N	80°29'59.93841"E
17	17°35'46.87083"N	80°30'0.353025"E
18	17°35'47.401581"N	80°30'1.82505"E
19	17°35'48.19353"N	80°30'4.892395"E
20	17°35'48.931291"N	80°30'7.588667"E
21	17°35'49.904276"N	80°30'10.350223"E
22	17°35'48.615058"N	80°30'14.897499"E
23	17°35'50.258958"N	80°30'21.244733"E
24	17°35'51.54577"N	80°30'26.339276"E
25	17°35'54.055191"N	80°30'29.826427"E
26	17°35'56.436569"N	80°30'33.609139"E
27	17°35'58.926614"N	80°30'39.566265"E
28	17°36'1.839087"N	80°30'47.445621"E
29	17°36'4.247912"N	80°30'50.625108"E
30	17°36'7.220179"N	80°30'55.300441"E
31	17°36'9.343016"N	80°30'57.280675"E
32	17°36'15.950272"N	80°31'17.454109"E
33	17°36'18.419042"N	80°31'15.11781"E
34	17°36'22.107112"N	80°31'11.168006"E
35	17°36'26.04816"N	80°31'7.524106"E
36	17°36'26.158912"N	80°31'6.439454"E
37	17°36'29.082819"N	80°31'3.252879"E
38	17°36'32.392563"N	80°31'0.390989"E
39	17°36'39.158954"N	80°30'56.720922"E
40	17°36'42.915341"N	80°30'54.803782"E
41	17°36'49.990279"N	80°30'50.507359"E
42	17°36'59.991698"N	80°30'45.508035"E
43	17°37'4.884049"N	80°30'46.07953"E
44	17°37'5.876824"N	80°30'45.230598"E
45	17°37'8.901015"N	80°30'44.275729"E
46	17°37'14.008514"N	80°30'43.972127"E
47	17°37'22.850445"N	80°30'44.160491"E

**Provisional Cardinal Points for Koyagudem\_OC-III**

48	17°37'27.690156"N	80°30'45.058779"E
49	17°37'32.8983"N	80°30'41.183934"E
50	17°38'0.698432"N	80°30'26.859949"E
51	17°38'12.945331"N	80°30'25.343819"E
52	17°38'25.58"N	80°30'14.469991"E
53	17°38'35.149994"N	80°30'1.599999"E
54	17°38'36.039243"N	80°29'59.673349"E
55	17°38'35.33"N	80°29'59.467"E
56	17°38'33.701"N	80°29'58.992"E
57	17°38'33.84"N	80°29'58.557"E
58	17°38'32.961"N	80°29'58.33"E
59	17°38'26.286"N	80°29'56.729"E
60	17°38'25.318"N	80°29'56.459"E
61	17°38'22.463"N	80°29'55.599"E
62	17°38'21.242"N	80°29'55.059"E
63	17°38'19.274"N	80°29'54.753"E
64	17°38'17.612"N	80°29'54.234"E
65	17°38'16.911"N	80°29'54.27"E
66	17°38'16.157"N	80°29'54.031"E
67	17°38'15.779"N	80°29'53.936"E
68	17°38'14.896"N	80°29'53.704"E
69	17°38'13.502"N	80°29'53.378"E
70	17°38'13.236"N	80°29'53.31"E
71	17°38'11.472"N	80°29'53.017"E
72	17°38'10.292"N	80°29'52.746"E
73	17°38'7.209"N	80°29'52.396"E
74	17°38'6.004"N	80°29'52.222"E
75	17°38'4.974"N	80°29'48.437"E
76	17°38'3.839"N	80°29'44.083"E
77	17°38'2.967"N	80°29'40.19"E
78	17°38'2.372"N	80°29'36.943"E
79	17°38'1.731"N	80°29'32.971"E
80	17°38'1.307498"N	80°29'29.394845"E
81	17°38'1.307514"N	80°29'29.394976"E
82	17°38'1.307478"N	80°29'29.394858"E
83	17°37'50.147308"N	80°29'36.379573"E
84	17°37'35.429"N	80°29'45.374"E
85	17°37'31.807"N	80°29'48.106"E
86	17°37'28.898"N	80°29'50.336"E
87	17°37'27.825"N	80°29'50.648"E
88	17°37'23.317"N	80°29'51.442"E
89	17°37'20.036"N	80°29'51.998"E
90	17°37'12.677"N	80°29'53.299"E
91	17°37'8.509"N	80°29'53.795"E
92	17°37'6.578"N	80°29'53.613"E
93	17°37'5.031"N	80°29'52.317"E
94	17°37'4.021"N	80°29'51.128"E
95	17°37'3.03"N	80°29'49.148"E

### Provisional Cardinal Points for Koyagudem\_OC-III

<b>96</b>	17°37'2.704"N	80°29'47.232"E
<b>97</b>	17°37'2.85"N	80°29'46.184"E
<b>98</b>	17°37'2.441"N	80°29'46.183"E
<b>99</b>	17°36'58.53"N	80°29'46.83"E
<b>100</b>	17°36'54.908"N	80°29'46.868"E
<b>101</b>	17°36'53.772"N	80°29'46.842"E
<b>102</b>	17°36'52.159"N	80°29'46.376"E
<b>103</b>	17°36'50.487"N	80°29'45.105"E
<b>104</b>	17°36'49.202"N	80°29'43.227"E
<b>105</b>	17°36'48.989"N	80°29'41.133"E
<b>106</b>	17°36'48.919"N	80°29'39.227"E
<b>107</b>	17°36'50.78"N	80°29'31.048"E
<b>108</b>	17°36'42.498"N	80°29'35.056"E
<b>109</b>	17°36'41.209"N	80°29'33.403"E
<b>110</b>	17°36'37.003"N	80°29'27.772"E
<b>111</b>	17°36'36.645"N	80°29'28.122"E

<b>Bounding Envelope points</b>		
<b>1</b>	<b>17°38'35.95"N</b>	<b>80°29'24.29"E</b>
<b>2</b>	<b>17°38'36.23"N</b>	<b>80°31'17.08"E</b>
<b>3</b>	<b>17°35'46.58"N</b>	<b>80°31'17.53"E</b>
<b>4</b>	<b>17°35'46.30"N</b>	<b>80°29'24.77"E</b>

Note: . DGPS survey is required to ascertain the exact location of the points.