

Jitpur Block Summary PART A

Sr. No.	Features	Details
1.	Location	
	Coal Block	Jitpur
	Latitude	24°46' 29" N to 24°47' 54" N (Provisional)
	Longitude	87°23' 57" E to 87°25' 02" E (Provisional)
	Topo Sheet No.	72 P/5
	Coalfield	Chuperbhita Basin, Rajmahal Coalfields
	Villages	Jitpur, Dahubera, Dumer, Sonpahar, Telbhita
	Tehsil/Taluka	Sundarpahari
	District	Godda
	State	Jharkhand
2.	Connectivity with Block	
	Nearest Rail Head	The nearest railway station at Pakur is at a distance of 70 km to the east and falls on Kiul-Bardhaman loopline of the Eastern Railways.
	Road	Godda-Sahibganj metaled road passes through Sundar Pahari block headquarters. Sundar Pahari is around 10 km from the block in south-west direction. The block is connected to Sundar Pahari by a seasonal kacha road which passes through Rampur Village. The district headquarter at Sahibganj is about 90 km north-north-east and that of Godda District is about 28 km west of the block.
	Airport	
3.	Area	
	Geological Block Area	3.00 sq. km. (As per GR) 2.9 sq.km. (As per shapefile in WGS84 UTM45N, Refer note below)
	Green Cover	Approx. 93 % (As per FSI Map)
	Non-Forest Area	Approx. 7 %
4.	Climate and Topography	
	Average Annual Rainfall	-
	Temperature (Min. — Max.)	-
	Local Surface Drainage Channels	The drainage of the area is mainly controlled by the Gumani River which flows in E-W direction further south of the block. Kewari nala flows from north to south through the central part of the block and finally joins the Gumani River. Besides, there are small seasonal nalas which drain into Kewari Nala.
	Rivers	-
5.	Exploration	
	Status	Explored
	Exploration Agency	MECL

	Total Number of Boreholes with meterage	29 Boreholes & 3144.85 m			
	Borehole Density	About 9.7 boreholes per sq. km			
	General Dip of Seams	5°-15° Easterly			
	General Strike Direction	NE-SW to NW-SE			
	Faults	Structure of the block is simple. It is not disturbed by any fault.			
6.	Coal Seams & Resources (Open Cast Proved: 50.621 MT, Underground Indicated: 30.474 MT)				
	Coal Seams	Thickness Range (m)	Depth Range (m)	Resources (MT)	Grade
	VII	0.47-1.35	29.59-30.28	0.251	G9-G10
	VI	0.31-4.60	43.71-55.80	2.724	G7-G10
	V	3.04-5.64	61.10-72.13	2.064	G11-G14
	IV Bottom	0.10-2.08		0.812	G9-G12
	III Top	0.18-1.45	20.69-99.40	0.15	G13-G14
	III Bottom	0.34-1.61	24.83-129.57	0.443	G9-G14
	L-3	0.11-1.33	47.86-149.56	0.192	G11-G12
	II Top Up. Split	1.25-11.30	27.29-164.05	11.803	G11-G14
	II Top Lw. Split	0.13-3.12	31.51-71.70	1.465	G11-G12
	II Top	8.36-10.46	47.96-89.51	4.23	G11-G12
	II Bottom	0.14-1.87	16.50-166.01	0.886	G11-G14
	II Combined	13.03-13.99	73.53-141.39	9.569	G9-G14
	L-2	1.29-3.74	24.03-176.30	6.145	G11-G14
	L-1	0.20-4.18	12.24-185.20	7.474	G9-G14
	L-2 & L-1 Combined	7.14-7.14		0.393	G9-G14
	I Top	3.87-9.25	101.00-194.73	16.261	G9-G14
	I Top+Middle	4.59-9.80		8.642	G9-G14
	I Middle	0.12-5.77	34.07-205.22	1.847	G9-G14
	I Bottom+Middle	2.33-6.92		2.277	G9-G14
	I Bottom	0.05-2.13	33.20-206.16	0.485	G9-G10
	I Combined	12.58-14.46	36.06-49.11	2.982	G9-G14
	Total			81.095	
7.	Surface Constraints	Moderately dense forest covers about 2.51 sq.km and open forest covers about 0.18 sq.km area of the block out of total 2.9 sq.km block area.			
8.	Grade of coal	G12 (Provisional) based on weighted average grade of seam-wise, grade-wise resources given in the GR.			
9.	Decision Support System (DSS) Analysis	Nil			
10.	Eco Sensitive Zone (ESZ) Analysis	NE boundary is approx. 41 km from the boundary of ESZ of Udawa Lake.			
11.	CBA Acquisition	Information not available.			

PART B

Sl. No.	Features	Details (As per information provided by the prior allottee)
1.	Previous Allocation	
	Name and Address of Allocatee	M/s Jindal Steel & Power Ltd Jindal Centre 12, Bhikaji Cama Place New Delhi- 110066
2.	Mine Capacity as per Mining Plan	2.5 Mtpa
3.	Status of Clearances/Approvals	
	Mining Plan/ Mine Closure Plan	Approval obtained as per letter no. 13016/20/2008- CA -1 dt 12.08.2008 from MoC
	Forest Clearance	Approval obtained for stage-1 as per letter no. 8-24/2010-FC dt 23.11.2012 from MoEF (FC division)
	Environmental Clearance	EC granted as per letter no. J-11015/148/2008-IA(IIM) dt 18.05.2019 from MoEF
	Mining Lease	Not obtained
	Land Acquisition as on 21.10.2014	Govt land- 35.94 Ha Tenancy Land- 353.17 Ha Forest land- 141.18 Ha
4.	Surface infrastructure , Already built, if any	Mine site office

Note:

1. The above data is compiled from Geological Report, Mining Plan and the data furnished by the prior allottee in Annexure-I/II, as available. For clarifications with regard to above data, please refer aforesaid source documents.
2. The boundary of the block has been taken from GR after conversion to WGS84 system by feature matching. The block boundary is provisional and the cardinal points, bounding co-ordinates are approximate.
3. There is a difference in area in the shape file and GR. Area in the shape file is based on feature mapped plan of the block as given in the GR. So, the area is tentative and field DGPS survey is required to ascertain the exact area.

Disclaimer:

1. The analysis is done on Beta-version (Trial Version) of Decision Support System (DSS) of FSI/ MOEF.
2. The Decision Rules for various parameters of this DSS System are controlled by FSI.
3. CMPDI only runs this DSS to obtain the status of any block based on these Decision Rules.
4. The database of the Decision Rules is updated by FSI from time to time.
5. CMPDI does not own any responsibility for variation in the results which are based on the decision Rules of the FSI DSS in case of any updation of the database at FSI end.
6. ESZ analysis and tiger habitat/ corridor given here is based on the information available in public domain. Bidders are encouraged to verify this information and any other information additionally available.

24°46'30"N

24°47'0"N

24°47'30"N

24°48'0"N

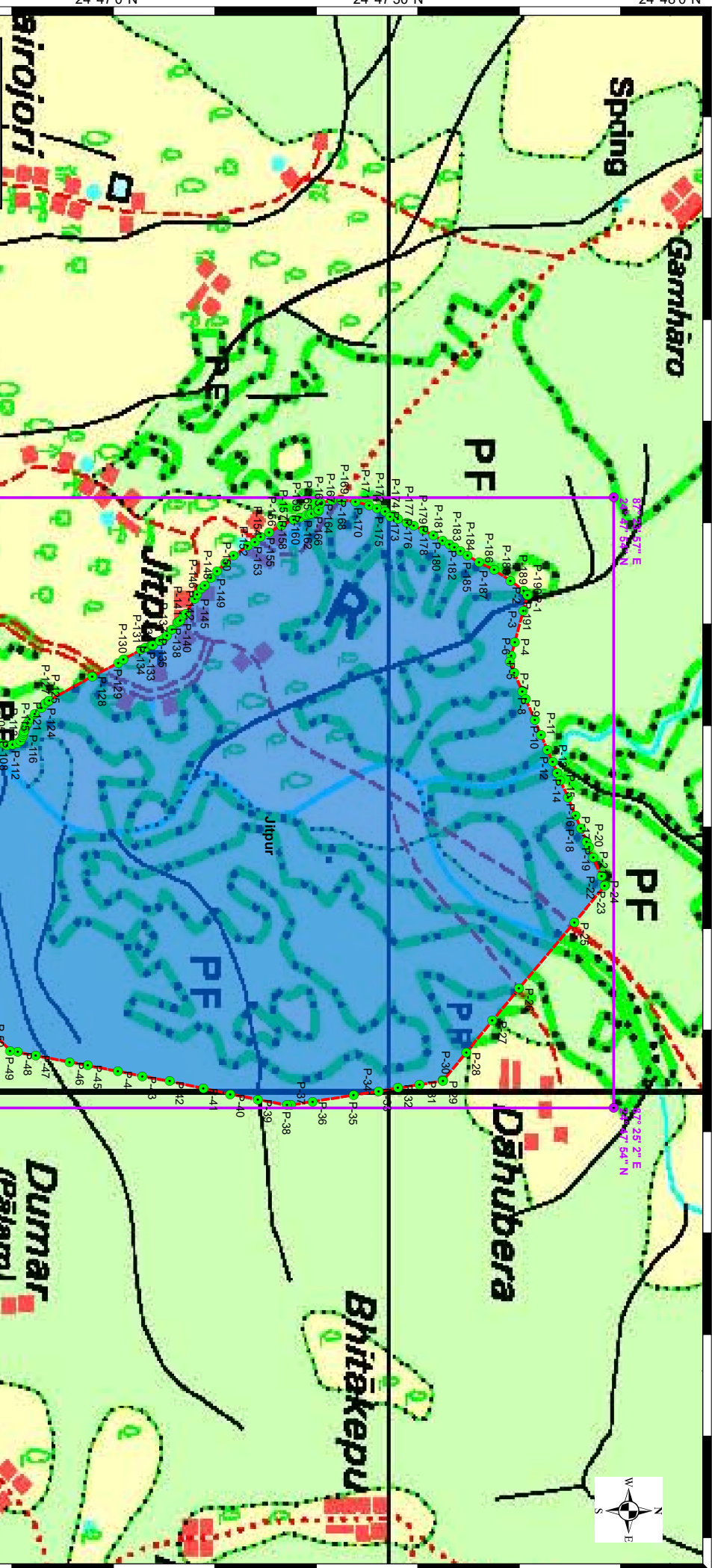
Note: Data is in WGS84 coordinate system.

Legend

- Bounding Coordinates
- Bounding Envelope
- Cardinal Points
- Block Boundary

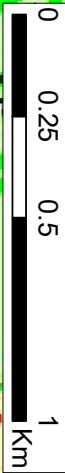
Category

- CIL
- ADDITIONAL CIL
- CMSP
- MMDR
- SCCL



Jitpur Block, Raimahal Coalfields

FOR INTERNAL/RESTRICTED USE ONLY



24°46'30"N

24°47'0"N

24°47'30"N

24°48'0"N

87°23'30"E

87°24'0"E

87°24'30"E

87°25'0"E

87°25'30"E

Provisional cardinal points for Jitpur Block

PointID	Longitude	Latitude
P-1	87° 24' 7.424" E	24° 47' 44.791" N
P-2	87° 24' 7.434" E	24° 47' 44.807" N
P-3	87° 24' 9.045" E	24° 47' 44.364" N
P-4	87° 24' 12.438" E	24° 47' 43.451" N
P-5	87° 24' 13.858" E	24° 47' 43.068" N
P-6	87° 24' 14.434" E	24° 47' 42.919" N
P-7	87° 24' 15.626" E	24° 47' 43.393" N
P-8	87° 24' 17.650" E	24° 47' 44.264" N
P-9	87° 24' 18.473" E	24° 47' 44.626" N
P-10	87° 24' 20.696" E	24° 47' 45.574" N
P-11	87° 24' 22.273" E	24° 47' 46.236" N
P-12	87° 24' 23.873" E	24° 47' 46.926" N
P-13	87° 24' 25.204" E	24° 47' 47.491" N
P-14	87° 24' 26.335" E	24° 47' 47.971" N
P-15	87° 24' 27.120" E	24° 47' 48.306" N
P-16	87° 24' 28.943" E	24° 47' 49.107" N
P-17	87° 24' 30.913" E	24° 47' 49.930" N
P-18	87° 24' 32.259" E	24° 47' 50.480" N
P-19	87° 24' 33.644" E	24° 47' 51.107" N
P-20	87° 24' 34.229" E	24° 47' 51.365" N
P-21	87° 24' 35.337" E	24° 47' 51.839" N
P-22	87° 24' 37.337" E	24° 47' 52.689" N
P-23	87° 24' 38.271" E	24° 47' 53.078" N
P-24	87° 24' 38.388" E	24° 47' 53.018" N
P-25	87° 24' 42.230" E	24° 47' 49.815" N
P-26	87° 24' 49.268" E	24° 47' 43.915" N
P-27	87° 24' 52.723" E	24° 47' 41.068" N
P-28	87° 24' 56.113" E	24° 47' 38.281" N
P-29	87° 24' 59.099" E	24° 47' 35.810" N
P-30	87° 24' 59.103" E	24° 47' 35.782" N
P-31	87° 24' 59.139" E	24° 47' 35.778" N
P-32	87° 24' 59.540" E	24° 47' 33.289" N
P-33	87° 24' 59.884" E	24° 47' 31.017" N
P-34	87° 25' 0.242" E	24° 47' 28.938" N
P-35	87° 25' 0.652" E	24° 47' 26.277" N
P-36	87° 25' 1.329" E	24° 47' 21.920" N
P-37	87° 25' 1.686" E	24° 47' 19.625" N
P-38	87° 25' 1.720" E	24° 47' 19.176" N
P-39	87° 25' 1.091" E	24° 47' 16.069" N
P-40	87° 25' 0.517" E	24° 47' 13.145" N
P-41	87° 24' 59.924" E	24° 47' 10.271" N
P-42	87° 24' 59.166" E	24° 47' 6.682" N
P-43	87° 24' 58.610" E	24° 47' 3.758" N
P-44	87° 24' 58.091" E	24° 47' 1.166" N
P-45	87° 24' 57.480" E	24° 46' 57.960" N
P-46	87° 24' 57.091" E	24° 46' 56.033" N
P-47	87° 24' 56.442" E	24° 46' 52.410" N
P-48	87° 24' 56.053" E	24° 46' 50.516" N

Provisional cardinal points for Jitpur Block

PointID	Longitude	Latitude
P-49	87° 24' 55.904" E	24° 46' 49.686" N
P-50	87° 24' 53.694" E	24° 46' 47.547" N
P-51	87° 24' 52.123" E	24° 46' 45.956" N
P-52	87° 24' 49.949" E	24° 46' 43.768" N
P-53	87° 24' 47.885" E	24° 46' 41.779" N
P-54	87° 24' 46.058" E	24° 46' 39.922" N
P-55	87° 24' 44.816" E	24° 46' 38.678" N
P-56	87° 24' 42.441" E	24° 46' 36.308" N
P-57	87° 24' 40.285" E	24° 46' 34.136" N
P-58	87° 24' 35.335" E	24° 46' 29.279" N
P-59	87° 24' 35.320" E	24° 46' 29.340" N
P-60	87° 24' 35.230" E	24° 46' 29.373" N
P-61	87° 24' 34.339" E	24° 46' 29.960" N
P-62	87° 24' 33.626" E	24° 46' 30.461" N
P-63	87° 24' 32.758" E	24° 46' 31.190" N
P-64	87° 24' 32.473" E	24° 46' 31.443" N
P-65	87° 24' 32.392" E	24° 46' 31.504" N
P-66	87° 24' 31.834" E	24° 46' 32.044" N
P-67	87° 24' 31.254" E	24° 46' 32.535" N
P-68	87° 24' 30.811" E	24° 46' 32.967" N
P-69	87° 24' 30.209" E	24° 46' 33.858" N
P-70	87° 24' 29.837" E	24° 46' 34.627" N
P-71	87° 24' 29.650" E	24° 46' 35.126" N
P-72	87° 24' 29.520" E	24° 46' 35.937" N
P-73	87° 24' 29.514" E	24° 46' 36.200" N
P-74	87° 24' 29.482" E	24° 46' 36.958" N
P-75	87° 24' 29.484" E	24° 46' 37.510" N
P-76	87° 24' 29.503" E	24° 46' 38.041" N
P-77	87° 24' 29.597" E	24° 46' 38.725" N
P-78	87° 24' 29.559" E	24° 46' 39.309" N
P-79	87° 24' 29.457" E	24° 46' 39.751" N
P-80	87° 24' 29.308" E	24° 46' 40.062" N
P-81	87° 24' 29.101" E	24° 46' 40.299" N
P-82	87° 24' 28.820" E	24° 46' 40.473" N
P-83	87° 24' 28.422" E	24° 46' 40.606" N
P-84	87° 24' 28.156" E	24° 46' 40.642" N
P-85	87° 24' 28.134" E	24° 46' 40.660" N
P-86	87° 24' 27.501" E	24° 46' 40.756" N
P-87	87° 24' 26.160" E	24° 46' 41.017" N
P-88	87° 24' 24.974" E	24° 46' 41.346" N
P-89	87° 24' 24.656" E	24° 46' 41.497" N
P-90	87° 24' 24.568" E	24° 46' 41.515" N
P-91	87° 24' 24.478" E	24° 46' 41.574" N
P-92	87° 24' 24.025" E	24° 46' 41.759" N
P-93	87° 24' 22.841" E	24° 46' 42.567" N
P-94	87° 24' 22.650" E	24° 46' 42.759" N
P-95	87° 24' 22.584" E	24° 46' 42.801" N
P-96	87° 24' 22.416" E	24° 46' 43.010" N

Provisional cardinal points for Jitpur Block

PointID	Longitude	Latitude
P-97	87° 24' 22.322" E	24° 46' 43.157" N
P-98	87° 24' 22.314" E	24° 46' 43.197" N
P-99	87° 24' 22.158" E	24° 46' 43.447" N
P-100	87° 24' 21.877" E	24° 46' 43.958" N
P-101	87° 24' 21.690" E	24° 46' 44.927" N
P-102	87° 24' 21.676" E	24° 46' 45.768" N
P-103	87° 24' 21.717" E	24° 46' 46.057" N
P-104	87° 24' 21.835" E	24° 46' 46.872" N
P-105	87° 24' 22.062" E	24° 46' 47.666" N
P-106	87° 24' 22.552" E	24° 46' 47.796" N
P-107	87° 24' 22.565" E	24° 46' 47.827" N
P-108	87° 24' 22.881" E	24° 46' 47.937" N
P-109	87° 24' 23.125" E	24° 46' 48.494" N
P-110	87° 24' 23.363" E	24° 46' 49.151" N
P-111	87° 24' 23.387" E	24° 46' 49.361" N
P-112	87° 24' 23.326" E	24° 46' 49.971" N
P-113	87° 24' 23.143" E	24° 46' 50.456" N
P-114	87° 24' 22.913" E	24° 46' 50.793" N
P-115	87° 24' 22.569" E	24° 46' 51.020" N
P-116	87° 24' 22.286" E	24° 46' 51.079" N
P-117	87° 24' 22.068" E	24° 46' 51.106" N
P-118	87° 24' 21.883" E	24° 46' 51.180" N
P-119	87° 24' 21.475" E	24° 46' 51.307" N
P-120	87° 24' 21.210" E	24° 46' 51.433" N
P-121	87° 24' 21.119" E	24° 46' 51.505" N
P-122	87° 24' 20.641" E	24° 46' 51.778" N
P-123	87° 24' 20.044" E	24° 46' 52.321" N
P-124	87° 24' 19.389" E	24° 46' 53.028" N
P-125	87° 24' 18.958" E	24° 46' 53.439" N
P-126	87° 24' 18.697" E	24° 46' 53.769" N
P-127	87° 24' 18.600" E	24° 46' 53.864" N
P-128	87° 24' 16.056" E	24° 46' 58.421" N
P-129	87° 24' 14.622" E	24° 47' 1.203" N
P-130	87° 24' 14.228" E	24° 47' 1.752" N
P-131	87° 24' 13.238" E	24° 47' 3.617" N
P-132	87° 24' 12.973" E	24° 47' 4.127" N
P-133	87° 24' 12.769" E	24° 47' 4.736" N
P-134	87° 24' 12.746" E	24° 47' 4.762" N
P-135	87° 24' 12.756" E	24° 47' 4.881" N
P-136	87° 24' 12.266" E	24° 47' 5.630" N
P-137	87° 24' 11.995" E	24° 47' 6.079" N
P-138	87° 24' 11.668" E	24° 47' 6.380" N
P-139	87° 24' 11.028" E	24° 47' 6.917" N
P-140	87° 24' 10.388" E	24° 47' 7.480" N
P-141	87° 24' 10.252" E	24° 47' 7.597" N
P-142	87° 24' 10.086" E	24° 47' 7.785" N
P-143	87° 24' 9.570" E	24° 47' 8.156" N
P-144	87° 24' 9.366" E	24° 47' 8.406" N

Provisional cardinal points for Jitpur Block

PointID	Longitude	Latitude
P-145	87° 24' 7.772" E	24° 47' 9.357" N
P-146	87° 24' 7.363" E	24° 47' 9.583" N
P-147	87° 24' 6.709" E	24° 47' 10.083" N
P-148	87° 24' 6.396" E	24° 47' 10.433" N
P-149	87° 24' 5.606" E	24° 47' 11.059" N
P-150	87° 24' 4.870" E	24° 47' 11.722" N
P-151	87° 24' 3.986" E	24° 47' 12.609" N
P-152	87° 24' 3.224" E	24° 47' 13.484" N
P-153	87° 24' 2.177" E	24° 47' 14.995" N
P-154	87° 24' 1.729" E	24° 47' 15.757" N
P-155	87° 24' 1.239" E	24° 47' 16.382" N
P-156	87° 24' 0.696" E	24° 47' 17.268" N
P-157	87° 23' 59.976" E	24° 47' 18.554" N
P-158	87° 23' 59.393" E	24° 47' 19.902" N
P-159	87° 23' 59.136" E	24° 47' 20.589" N
P-160	87° 23' 58.906" E	24° 47' 21.250" N
P-161	87° 23' 58.818" E	24° 47' 21.589" N
P-162	87° 23' 58.725" E	24° 47' 21.775" N
P-163	87° 23' 58.567" E	24° 47' 22.273" N
P-164	87° 23' 58.500" E	24° 47' 22.523" N
P-165	87° 23' 58.335" E	24° 47' 22.548" N
P-166	87° 23' 58.326" E	24° 47' 22.565" N
P-167	87° 23' 57.573" E	24° 47' 22.787" N
P-168	87° 23' 57.308" E	24° 47' 23.980" N
P-169	87° 23' 57.274" E	24° 47' 25.033" N
P-170	87° 23' 57.442" E	24° 47' 26.479" N
P-171	87° 23' 57.857" E	24° 47' 27.949" N
P-172	87° 23' 58.132" E	24° 47' 28.771" N
P-173	87° 23' 58.477" E	24° 47' 29.630" N
P-174	87° 23' 58.834" E	24° 47' 30.452" N
P-175	87° 23' 59.025" E	24° 47' 30.177" N
P-176	87° 23' 59.300" E	24° 47' 30.987" N
P-177	87° 23' 59.631" E	24° 47' 31.921" N
P-178	87° 24' 0.016" E	24° 47' 32.693" N
P-179	87° 24' 0.497" E	24° 47' 33.727" N
P-180	87° 24' 1.047" E	24° 47' 34.798" N
P-181	87° 24' 1.555" E	24° 47' 35.744" N
P-182	87° 24' 1.954" E	24° 47' 36.478" N
P-183	87° 24' 2.297" E	24° 47' 37.001" N
P-184	87° 24' 2.695" E	24° 47' 37.661" N
P-185	87° 24' 3.189" E	24° 47' 38.420" N
P-186	87° 24' 3.931" E	24° 47' 39.652" N
P-187	87° 24' 4.714" E	24° 47' 41.258" N
P-188	87° 24' 5.867" E	24° 47' 42.988" N
P-189	87° 24' 6.923" E	24° 47' 44.394" N
P-190	87° 24' 7.335" E	24° 47' 44.817" N
P-191	87° 24' 7.424" E	24° 47' 44.791" N

Provisional cardinal points for Jitpur Block

PointID	Longitude	Latitude
<p>Note: The provisional cardinal points are in WGS84 coordinate system. These points are extracted through ArcGIS software after georeferencing of block boundary and onground DGPS survey is required to ascertain the exact location of the points.</p>		