

### East of Sethiathope Lignite Block Summary

<b>Sr.No.</b>	<b>Features</b>	<b>Details</b>
<b>1</b>	<b>Location</b>	
	Lignite Block	<b>East of Sethiathope</b>
	Latitude	Latitude (N): 11°24'59.5"N - 11°30'9.1"N
	Longitude	Longitude (E): 79°32'57.2"E - 79°38'50.4"E
	Topo Sheet No.	SOI-58 M/11
	Lignite Field	Neyveli Lignite Field
	Villages	Ambapuram, Thalaikulam, Nathamedu, Krishnapuram, Vadakku thittai, Muthukrishnapuram, Therku thittai, Manaveli, Vandarayanpattu, Odaiyur, Budarayanpettai, Bhuvanagiri, Alisikudi, Orattur, Chavadi, Nagaramalai, Chinnanatham, Miralur, Manjakollai, Pinnalur.
	Tehsil/Taluka	Bhuvanagiri
	District	Cuddalore
	State	Tamil Nadu
<b>2</b>	<b>Connectivity with Block</b>	
	Nearest Rail Head	Chidambaram
	Road	The block can be approached from Sethiathope village located south-west of block on Kumbhakonam-Chennai National highway (45C). Virudachalam-Chidambaram state highway passes through Southern side of the block.
	Airport	Puducherry
<b>3</b>	<b>Area</b>	
	Geological Block Area (After re-blocking)	84.41 Sq.km
	Forest Area	No forest as per topo sheet
	Non-Forest Area	84.41 Sq.km
<b>4</b>	<b>Climate and Topography</b>	
	Average Annual Rainfall	1200 mm.
	Temperature (Min.- Max. in°C)	27 to 37
	Local Surface Drainage Channels	The Topography is gently undulating with a gradient of 1 in 35 to 1 in 58 towards east and southeast. The study area is covered by alluvium and gentle undulating topography generally sloping very gently towards east and south-east. The surface elevation is 16-25m above MSL. The area is drained by Walaja Eri in the north-western part of the block.
	Rivers	Vellar river passing through southern side of the block boundary.
<b>5</b>	<b>Exploration</b>	
	Status	Regional Exploration completed on 800m grid.
	Exploration Agency	Mineral Exploration Corporation Ltd., (MECL)
	Explored Area (as per GR)	86.63 Sq. km (Appx.) as per GR.

	Total Number of Boreholes with metreage	86 boreholes & 30329 m		
	Borehole Density	1.00		
	General Dip of Seams	NE		
	General Strike Direction	NW-SE		
	Faults	Devoid of Fault		
	Depth range of Lignite seam	52m to 445.m		
<b>6</b>	<b>Lignite Reserve: Indicated category</b>			
	Grade-wise	Grade: GCV Range (K.Cal/Kg.)	Gross Reserves (MT)	Reserves %
		C: 1001-2000	38.465	42.21
		B: 2001-3000	52.652	57.79
		A: 3001-4000	0	0
		<b>Total</b>	<b>91.117</b>	<b>100.00</b>
	Ratio-wise	Lignite to OB+IB Ratio	Gross Reserves (MT)	Reserves %
		< 1 : 15	16.891	18.54
		> 1 : 15	74.226	81.46
		<b>Total</b>	<b>91.117</b>	<b>100.00</b>
<b>7</b>	<b>Surface Constraints</b>	Major Vellar river passing through southern side of the block boundary. State highway passes through the block. Most of the area is under cultivation.		
<b>8</b>	<b>Grade of Lignite</b>	B (Provisional). Based on Grade wise data available in GR.		
<b>9</b>	<b>Decision Support System (DSS) Analysis</b>	The polygon touches major river(s) – Vellar river or Vasishtha Nadi and Uppanar.		
<b>10</b>	<b>Eco Sensitive Zone (ESZ)</b>	About 70 Km North-East of Karaivetti Bird Sanctuary.		
<b>11</b>	<b>Remarks</b>	Regional drilling carried out on 800m grid spacing. Geological Report available.		

**Note:**

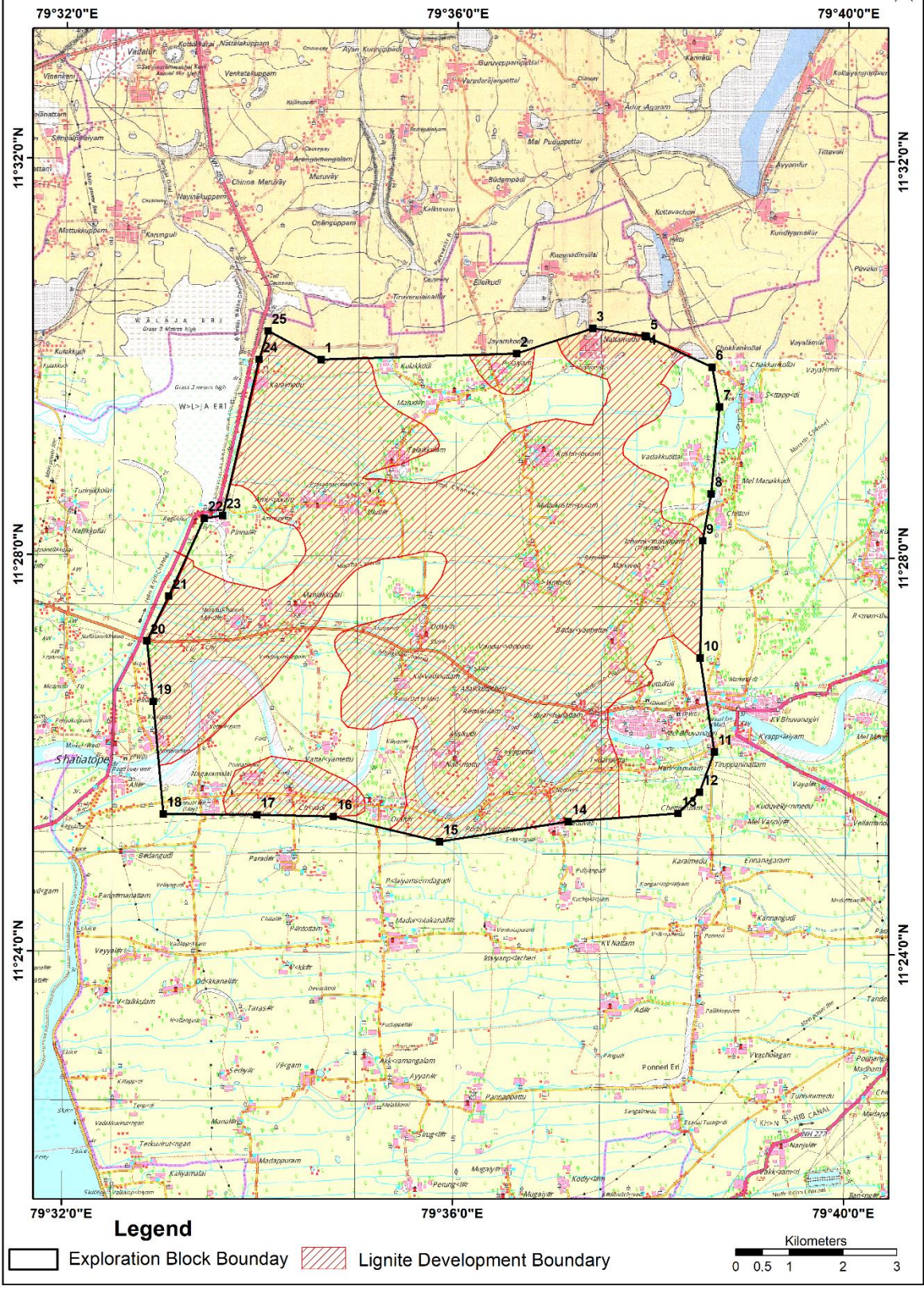
1. The summary has been compiled from “Geological Report on Exploration for Lignite, East of Sethiathope Block, Cuddalore District, Tamil Nadu-October 2015, prepared by Mineral Exploration Corporation Ltd., Nagpur.
2. The Exploration block area mentioned above is as given in the Geological report, which may vary after DGPS survey.

**Disclaimer:**

1. The analysis is done on Beta-version (Trial Version) of Decision Support System (DSS) of FSI/ MOEF.
2. The Decision Rules for various parameters of this DSS System are controlled by FSI.
3. CMPDI only runs this DSS to obtain the status of any block based on these Decision Rules.
4. The database of the Decision Rules is updated by FSI from time to time.

5. CMPDI does not own any responsibility for variation in the results which are based on the decision Rules of the FSI DSS in case of any updation of the database at FSI end.
6. ESZ analysis and tiger habitat/ corridor given here is based on the information available in public domain. Bidders are encouraged to verify this information and any other information additionally available.

**EAST OF SETHIATHOPE LIGNITE BLOCK, NEYVELI LIGNITE FIELD, CUDDALORE DISTRICT, TAMILNADU**  
 Part of SOI Toposheet 58 M/11



**Legend**

Exploration Block Bounday
  Lignite Development Boundary

Kilometers  
 0 0.5 1 2 3

**Provisional cardinal Points for East of Sethiathope Lignite Block,  
Cuddalore District, Tamilnadu.**

Boundary Points	Latitude (DMS)	Longitude (DMS)
1	11° 29' 58.744" N	79° 34' 36.879" E
2	11° 30' 2.904" N	79° 36' 36.971" E
3	11° 30' 18.438" N	79° 37' 23.594" E
4	11° 30' 13.842" N	79° 37' 55.953" E
5	11° 30' 13.580" N	79° 37' 56.624" E
6	11° 29' 55.313" N	79° 38' 37.017" E
7	11° 29' 31.264" N	79° 38' 41.742" E
8	11° 28' 38.570" N	79° 38' 36.760" E
9	11° 28' 10.201" N	79° 38' 31.661" E
10	11° 26' 59.283" N	79° 38' 30.517" E
11	11° 26' 2.474" N	79° 38' 39.535" E
12	11° 25' 38.093" N	79° 38' 30.522" E
13	11° 25' 25.091" N	79° 38' 17.466" E
14	11° 25' 19.874" N	79° 37' 10.091" E
15	11° 25' 7.331" N	79° 35' 51.134" E
16	11° 25' 22.292" N	79° 34' 45.909" E
17	11° 25' 23.082" N	79° 33' 58.932" E
18	11° 25' 23.291" N	79° 33' 1.445" E
19	11° 26' 31.414" N	79° 32' 54.843" E
20	11° 27' 8.014" N	79° 32' 50.844" E
21	11° 27' 35.164" N	79° 33' 4.185" E
22	11° 28' 22.384" N	79° 33' 25.709" E
23	11° 28' 24.077" N	79° 33' 36.886" E
24	11° 29' 58.733" N	79° 33' 58.874" E
25	11° 30' 15.995" N	79° 34' 4.279" E