

DONGRITAL-II COAL BLOCK SUMMARY

PART A

Sr. No	Features	Details
1. Location		
	Coal Block	Dongrital-II
	Latitude	23 54' 40" to 23 58' 35" (Provisional)
	Longitude	82 15' 51" to 82 19' 24" (Provisional)
	Topo Sheet No.	64 I/1 & 64 I/5
	Coalfield	Singrauli
	Villages	Bazori, Digwaha, Dongri, Bhaisanbuda
	Tehsil/Taluka	Singrauli
	District	Singrauli
	State	Madhya Pradesh
2. Connectivity with Block		
	Nearest Rail Head	Sarai Railway station on Katni-Chopan Route at a distance of 30 Km. Gajraphara village is another small railway station near to the block.
	Road	The block is approachable by all-weathered road from Singrauli (67 km.), Sidhi (80 km.), and Sarai (30 km). Waidhan, which is Block headquarter (45 km) is connected by fair weather road. Sidhi-Waidhan road via Parasia village is the nearest state highway to the present block. The Singrauli town is connected to Katni (100 km), Satna (30km), and Varanasi (210 km) by National Highways. The block is traversed by fair weathered & forest roads.
	Airport	Varanasi Airport, Uttar Pradesh
3. Area		
	Geological Block Area	As per GR: 30.045 sq.km. approx. As per shapefile: 30.27 sq.km. (in WGS84 Datum) approx.
	Forest Area	Approx. 19% (As per FSI)
	Non-Forest Area	Approx. 81% (As per FSI)
4. Climate and Topography		
	Average Annual Rainfall	1130 mm
	Temperature (Min. — Max.)	10°C-48°C
	Local Surface Drainage Channels	Gopad river, which is a tributary of Son river is located at about 2.5 km. west of the block. The westerly flowing Hurdul nala passes through southern part of the property and ultimately drains into Gopad river.

	Rivers	Gopad river at about 2.5 km west of the block.			
5.	Exploration				
	Status	Explored in Detail			
	Exploration Agency	CMPDI, March 2000			
	Total Number of Boreholes with meterage	213 Boreholes; 23413.50 m			
	Borehole Density	Approx. 7 Boreholes/sq.km.			
	General Dip of Seams	The area is characterized by rolling dip. The general gradient of coal seam is in the range of 1 in 20 to (3°) to 1 in 30 (2°) in the major part of the property.			
	General Strike Direction	The general strike of the coal seams is ENE-WSW in the western part, E-W in the central part and WNW-ESE in the eastern part of the block with northerly dip.			
6.	Coal Seams & Reserve				
	Coal Seams	Thickness Range (m)	Depth Range (m)	Geological Resources (MT)	Grade
	R-I	0.35-2.00	19.61-70.51	8.767	F-G
	R-II	1.32-5.48	9.68-105.42	27.586	D-F
	Local-I	0.05-0.35			
	VIII	0.64-2.84	24.13-204.07	27.623	A-E
	VII Top	0.94-3.25	39.07-221.91	5.514	B-E
	VII Middle	0.09-2.30	53.05-228.00	6.953	B-E
	VII Bottom	0.56-4.36	11.15-230.78	82.011	A-F
	VI	0.18-3.43			
	Local-II	0.10-0.40			
	V	0.25-0.56			
	III	0.14-0.32			
		Total		158.454	
7.	Surface Constraints	NA			
8.	Grade of coal	G7 (Provisional) based on weighted average grade as per grade-wise data available in GR.			
9.	Decision Support System (DSS) Analysis	Hydrology Info: The polygon is within 250 meters of major river(s)- Hurdul Nala Wildlife Info: The polygon touches Wildlife Habitat(s)- Sloth Bear			
10.	Eco Sensitive Zone (ESZ) Analysis	Approx. 3 km from ESZ boundary of Sanjay Gandhi Dubri National Park.			

PART B

Sr. No.	Features	Details
1.	Previous Allocation	
	Name and Address of Allocatee	Madhya Pradesh State Mining Corporation Limited (MPSMC). Paryawas Bhawan, Block No. 1 Second floor (A) Arera hills. Bhopal (MP)
2.	Target Capacity as per Mining Plan	2.9 MTY
3.	Status of Clearances/Approvals (As per information submitted by prior allottee)	
	Mining Plan/ Mine Closure Plan	<i>Approved</i>
	Forest Clearance	<i>Not required (No forest land in Phase-I)</i>
	Environmental Clearance	<i>Available</i>
	Mining Lease	<i>No</i>
	Land Acquisition	<i>12.26 Ha</i>
	No. of PAFs	<i>681 in 4 villages</i>
4.	Surface Infrastructure already built, if any.	<i>Field hostel , Site infrastructure developed</i>

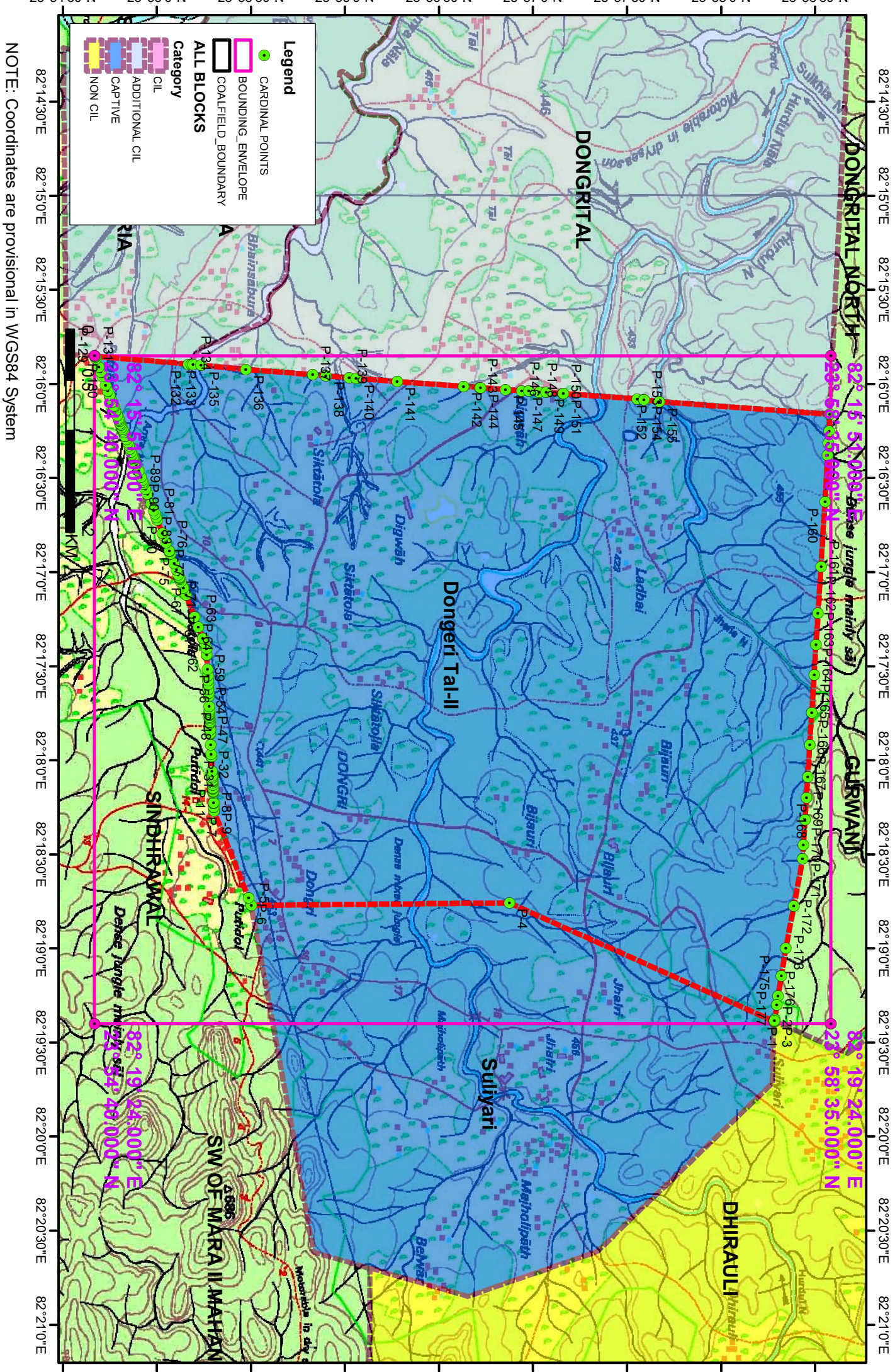
Note:

1. The above data is compiled from Geological Report, Mining Plan and the data furnished by the prior allottee in Annexure-I/II, as available. For clarifications with regard to above data, please refer aforesaid source documents.
2. The boundary of the block has been taken from GR after conversion to WGS84 system by feature matching. The block boundary is provisional and the cardinal points, bounding co-ordinates are approximate.
3. There is a difference in area in the shape file and GR. Area in the shape file is based on feature mapped plan of the block as given in the GR. So, the area is tentative and field DGPS survey is required to ascertain the exact area.

Disclaimer:

1. The analysis is done on Beta-version (Trial Version) of Decision Support System (DSS) of FSI/ MOEF.
2. The Decision Rules for various parameters of this DSS System are controlled by FSI.
3. CMPDI only runs this DSS to obtain the status of any block based on these Decision Rules.
4. The database of the Decision Rules is updated by FSI from time to time.
5. CMPDI does not own any responsibility for variation in the results which are based on the decision Rules of the FSI DSS in case of any updation of the database at FSI end.
6. ESZ analysis and tiger habitat/ corridor given here is based on the information available in public domain. Bidders are encouraged to verify this information and any other information additionally available.

Dongerital-II Block, Singrauli Coalfield



NOTE: Coordinates are provisional in WGS84 System

23°54'30"N 23°55'0"N 23°55'30"N 23°56'0"N 23°56'30"N 23°57'0"N 23°57'30"N 23°58'0"N 23°58'30"N

82°14'30"E 82°15'0"E 82°15'30"E 82°16'0"E 82°16'30"E 82°17'0"E 82°17'30"E 82°18'0"E 82°18'30"E 82°19'0"E 82°19'30"E 82°20'0"E 82°20'30"E 82°21'0"E

82°14'30"E 82°15'0"E 82°15'30"E 82°16'0"E 82°16'30"E 82°17'0"E 82°17'30"E 82°18'0"E 82°18'30"E 82°19'0"E 82°19'30"E 82°20'0"E 82°20'30"E 82°21'0"E

23°54'30"N 23°55'0"N 23°55'30"N 23°56'0"N 23°56'30"N 23°57'0"N 23°57'30"N 23°58'0"N 23°58'30"N

23°54'30"N 23°55'0"N 23°55'30"N 23°56'0"N 23°56'30"N 23°57'0"N 23°57'30"N 23°58'0"N 23°58'30"N

Provisional Cardinal Points for Dongeri Tal-II Block

POINT NO	Longitude (WGS84)	Latitude (WGS84)
P-1	82° 19' 23.107" E	23° 58' 16.975" N
P-2	82° 19' 23.284" E	23° 58' 16.950" N
P-3	82° 19' 23.236" E	23° 58' 16.843" N
P-4	82° 18' 45.468" E	23° 56' 52.468" N
P-5	82° 18' 46.257" E	23° 55' 30.135" N
P-6	82° 18' 43.858" E	23° 55' 29.188" N
P-7	82° 18' 16.091" E	23° 55' 18.116" N
P-8	82° 18' 15.010" E	23° 55' 18.068" N
P-9	82° 18' 15.010" E	23° 55' 18.068" N
P-10	82° 18' 13.693" E	23° 55' 18.009" N
P-11	82° 18' 13.539" E	23° 55' 18.002" N
P-12	82° 18' 13.536" E	23° 55' 18.002" N
P-13	82° 18' 10.508" E	23° 55' 17.866" N
P-14	82° 18' 10.084" E	23° 55' 17.847" N
P-15	82° 18' 9.872" E	23° 55' 17.838" N
P-16	82° 18' 9.255" E	23° 55' 17.810" N
P-17	82° 18' 8.919" E	23° 55' 17.795" N
P-18	82° 18' 8.908" E	23° 55' 17.795" N
P-19	82° 18' 7.955" E	23° 55' 17.752" N
P-20	82° 18' 6.992" E	23° 55' 17.709" N
P-21	82° 18' 6.991" E	23° 55' 17.709" N
P-22	82° 18' 6.730" E	23° 55' 17.697" N
P-23	82° 18' 6.588" E	23° 55' 17.691" N
P-24	82° 18' 6.543" E	23° 55' 17.689" N
P-25	82° 18' 5.503" E	23° 55' 17.643" N
P-26	82° 18' 5.497" E	23° 55' 17.642" N
P-27	82° 18' 5.024" E	23° 55' 17.621" N
P-28	82° 18' 3.373" E	23° 55' 17.547" N
P-29	82° 17' 58.776" E	23° 55' 17.342" N
P-30	82° 17' 58.762" E	23° 55' 17.341" N
P-31	82° 17' 58.080" E	23° 55' 17.311" N
P-32	82° 17' 55.108" E	23° 55' 17.178" N
P-33	82° 17' 51.586" E	23° 55' 17.021" N
P-34	82° 17' 51.434" E	23° 55' 17.014" N
P-35	82° 17' 50.226" E	23° 55' 16.960" N
P-36	82° 17' 48.167" E	23° 55' 16.868" N
P-37	82° 17' 47.828" E	23° 55' 16.853" N
P-38	82° 17' 47.815" E	23° 55' 16.852" N
P-39	82° 17' 47.094" E	23° 55' 16.820" N
P-40	82° 17' 46.639" E	23° 55' 16.799" N
P-41	82° 17' 46.172" E	23° 55' 16.779" N
P-42	82° 17' 45.623" E	23° 55' 16.754" N
P-43	82° 17' 45.475" E	23° 55' 16.747" N
P-44	82° 17' 45.329" E	23° 55' 16.741" N
P-45	82° 17' 45.251" E	23° 55' 16.737" N
P-46	82° 17' 44.720" E	23° 55' 16.714" N
P-47	82° 17' 44.043" E	23° 55' 16.683" N

Provisional Cardinal Points for Dongeri Tal-II Block

POINT NO	Longitude (WGS84)	Latitude (WGS84)
P-48	82° 17' 42.778" E	23° 55' 16.627" N
P-49	82° 17' 39.471" E	23° 55' 16.479" N
P-50	82° 17' 38.654" E	23° 55' 16.442" N
P-51	82° 17' 37.368" E	23° 55' 16.385" N
P-52	82° 17' 37.338" E	23° 55' 16.384" N
P-53	82° 17' 35.723" E	23° 55' 16.311" N
P-54	82° 17' 34.587" E	23° 55' 16.261" N
P-55	82° 17' 32.967" E	23° 55' 16.188" N
P-56	82° 17' 30.892" E	23° 55' 16.096" N
P-57	82° 17' 26.597" E	23° 55' 15.904" N
P-58	82° 17' 26.416" E	23° 55' 15.895" N
P-59	82° 17' 24.212" E	23° 55' 15.797" N
P-60	82° 17' 22.752" E	23° 55' 15.236" N
P-61	82° 17' 21.180" E	23° 55' 14.632" N
P-62	82° 17' 21.157" E	23° 55' 14.623" N
P-63	82° 17' 17.377" E	23° 55' 13.171" N
P-64	82° 17' 14.306" E	23° 55' 11.991" N
P-65	82° 17' 7.283" E	23° 55' 9.293" N
P-66	82° 17' 5.040" E	23° 55' 8.431" N
P-67	82° 17' 2.996" E	23° 55' 7.646" N
P-68	82° 17' 2.094" E	23° 55' 7.300" N
P-69	82° 17' 1.772" E	23° 55' 7.176" N
P-70	82° 17' 1.586" E	23° 55' 7.104" N
P-71	82° 17' 0.706" E	23° 55' 6.766" N
P-72	82° 16' 59.291" E	23° 55' 6.223" N
P-73	82° 16' 57.190" E	23° 55' 5.415" N
P-74	82° 16' 54.188" E	23° 55' 4.262" N
P-75	82° 16' 53.442" E	23° 55' 3.976" N
P-76	82° 16' 53.253" E	23° 55' 3.903" N
P-77	82° 16' 50.654" E	23° 55' 2.904" N
P-78	82° 16' 48.435" E	23° 55' 2.052" N
P-79	82° 16' 47.563" E	23° 55' 1.717" N
P-80	82° 16' 43.346" E	23° 55' 0.097" N
P-81	82° 16' 42.468" E	23° 54' 59.759" N
P-82	82° 16' 41.402" E	23° 54' 59.350" N
P-83	82° 16' 40.275" E	23° 54' 58.917" N
P-84	82° 16' 38.113" E	23° 54' 58.086" N
P-85	82° 16' 35.193" E	23° 54' 56.964" N
P-86	82° 16' 33.493" E	23° 54' 56.311" N
P-87	82° 16' 31.886" E	23° 54' 55.694" N
P-88	82° 16' 31.343" E	23° 54' 55.485" N
P-89	82° 16' 30.813" E	23° 54' 55.281" N
P-90	82° 16' 29.718" E	23° 54' 54.861" N
P-91	82° 16' 27.736" E	23° 54' 54.100" N
P-92	82° 16' 25.669" E	23° 54' 53.305" N
P-93	82° 16' 24.089" E	23° 54' 52.698" N
P-94	82° 16' 23.688" E	23° 54' 52.544" N

Provisional Cardinal Points for Dongeri Tal-II Block

POINT NO	Longitude (WGS84)	Latitude (WGS84)
P-95	82° 16' 23.423" E	23° 54' 52.442" N
P-96	82° 16' 23.271" E	23° 54' 52.384" N
P-97	82° 16' 22.474" E	23° 54' 52.078" N
P-98	82° 16' 21.641" E	23° 54' 51.758" N
P-99	82° 16' 20.676" E	23° 54' 51.387" N
P-100	82° 16' 19.691" E	23° 54' 51.009" N
P-101	82° 16' 18.702" E	23° 54' 50.629" N
P-102	82° 16' 17.687" E	23° 54' 50.239" N
P-103	82° 16' 16.676" E	23° 54' 49.850" N
P-104	82° 16' 16.620" E	23° 54' 49.829" N
P-105	82° 16' 15.515" E	23° 54' 49.404" N
P-106	82° 16' 14.762" E	23° 54' 49.115" N
P-107	82° 16' 14.318" E	23° 54' 48.945" N
P-108	82° 16' 13.798" E	23° 54' 48.745" N
P-109	82° 16' 13.138" E	23° 54' 48.491" N
P-110	82° 16' 12.540" E	23° 54' 48.261" N
P-111	82° 16' 11.947" E	23° 54' 48.034" N
P-112	82° 16' 11.440" E	23° 54' 47.839" N
P-113	82° 16' 11.050" E	23° 54' 47.689" N
P-114	82° 16' 10.111" E	23° 54' 47.328" N
P-115	82° 16' 8.781" E	23° 54' 46.817" N
P-116	82° 16' 8.564" E	23° 54' 46.734" N
P-117	82° 16' 8.561" E	23° 54' 46.733" N
P-118	82° 16' 7.454" E	23° 54' 46.307" N
P-119	82° 16' 7.003" E	23° 54' 46.134" N
P-120	82° 16' 5.853" E	23° 54' 45.692" N
P-121	82° 16' 4.729" E	23° 54' 45.260" N
P-122	82° 16' 3.912" E	23° 54' 44.947" N
P-123	82° 16' 3.622" E	23° 54' 44.835" N
P-124	82° 16' 2.189" E	23° 54' 44.284" N
P-125	82° 16' 0.496" E	23° 54' 43.634" N
P-126	82° 15' 57.722" E	23° 54' 42.568" N
P-127	82° 15' 56.237" E	23° 54' 41.998" N
P-128	82° 15' 54.584" E	23° 54' 41.440" N
P-129	82° 15' 51.845" E	23° 54' 40.516" N
P-130	82° 15' 51.409" E	23° 54' 40.369" N
P-131	82° 15' 51.158" E	23° 54' 40.284" N
P-132	82° 15' 53.620" E	23° 55' 9.892" N
P-133	82° 15' 53.702" E	23° 55' 10.961" N
P-134	82° 15' 53.750" E	23° 55' 11.455" N
P-135	82° 15' 54.002" E	23° 55' 14.073" N
P-136	82° 15' 55.337" E	23° 55' 28.343" N
P-137	82° 15' 57.001" E	23° 55' 49.571" N
P-138	82° 15' 57.380" E	23° 55' 53.889" N
P-139	82° 15' 58.016" E	23° 56' 1.260" N
P-140	82° 15' 58.187" E	23° 56' 3.556" N
P-141	82° 15' 59.204" E	23° 56' 16.612" N

Provisional Cardinal Points for Dongeri Tal-II Block

POINT NO	Longitude (WGS84)	Latitude (WGS84)
P-142	82° 16' 0.741" E	23° 56' 37.750" N
P-143	82° 16' 1.124" E	23° 56' 42.973" N
P-144	82° 16' 1.140" E	23° 56' 43.196" N
P-145	82° 16' 1.720" E	23° 56' 51.105" N
P-146	82° 16' 2.133" E	23° 56' 56.257" N
P-147	82° 16' 2.273" E	23° 56' 58.671" N
P-148	82° 16' 2.514" E	23° 57' 1.977" N
P-149	82° 16' 2.675" E	23° 57' 4.174" N
P-150	82° 16' 3.066" E	23° 57' 9.534" N
P-151	82° 16' 3.077" E	23° 57' 9.683" N
P-152	82° 16' 4.712" E	23° 57' 33.123" N
P-153	82° 16' 4.999" E	23° 57' 35.298" N
P-154	82° 16' 5.013" E	23° 57' 35.403" N
P-155	82° 16' 5.657" E	23° 57' 40.289" N
P-156	82° 16' 9.673" E	23° 58' 34.547" N
P-157	82° 16' 15.048" E	23° 58' 34.396" N
P-158	82° 16' 18.882" E	23° 58' 34.235" N
P-159	82° 16' 22.651" E	23° 58' 33.989" N
P-160	82° 16' 37.595" E	23° 58' 33.096" N
P-161	82° 16' 58.291" E	23° 58' 31.829" N
P-162	82° 17' 13.127" E	23° 58' 30.903" N
P-163	82° 17' 23.269" E	23° 58' 30.252" N
P-164	82° 17' 32.760" E	23° 58' 29.670" N
P-165	82° 17' 44.821" E	23° 58' 28.916" N
P-166	82° 17' 55.135" E	23° 58' 28.231" N
P-167	82° 18' 5.311" E	23° 58' 27.631" N
P-168	82° 18' 11.890" E	23° 58' 27.194" N
P-169	82° 18' 18.957" E	23° 58' 26.783" N
P-170	82° 18' 27.026" E	23° 58' 26.269" N
P-171	82° 18' 31.472" E	23° 58' 25.987" N
P-172	82° 18' 46.480" E	23° 58' 23.134" N
P-173	82° 18' 59.946" E	23° 58' 20.564" N
P-174	82° 19' 8.786" E	23° 58' 19.176" N
P-175	82° 19' 15.262" E	23° 58' 18.071" N
P-176	82° 19' 18.012" E	23° 58' 17.712" N
P-177	82° 19' 22.612" E	23° 58' 17.044" N