

DOLESARA COAL BLOCK SUMMARY

PART A

Sr. No	Features	Details
1. Location		
	Coal Block	DOLESARA
	Latitude	22° 7' 9" N-22° 10' 29" N (Provisional)
	Longitude	83° 23' 35" E-83° 26' 17" E (Provisional)
	Topo Sheet No.	64 N/8 (R.F. 1:50,000)
	Coalfield	Mand Raigarh
	Villages	Dolesara, Mauhapali, Barkaspali, Patrapali
	Tehsil/Taluka	Tamnara, Gharghoda
	District	Raigarh
	State	Chhattisgarh
2. Connectivity with Block		
	Nearest Rail Head	Kharsia and Raigarh railway stations on Howrah – Nagpur section of South Eastern Railway are located in the southern periphery of the coalfield. Gharghoda is about 40 km. north of Raigarh Railway Station which is on Howrah-Bombay Main Line of South Eastern Railway.
	Road	Dolesara block is about 50 km away from Raigarh township and is close to Tehsil Headquarters at Gharghoda which lies on Raigarh-Ambikapur State Highway.
	Airport	
3. Area		
	Geological Block Area	15.17 sq.km.(As per shape file. Refer note below)
	Forest Area	0.22 sqkm. in North Central part
	Non-Forest Area	14.95 sqkm. Major part is covered with agricultural land.
4. Climate and Topography		
	Average Annual Rainfall	1620 mm
	Temperature (Min. — Max.)	18.6° - 45° C
	Local Surface Drainage Channels	The topography of Dolesara block is mostly represented by undulating terrain. The general ground level elevation of the area varies between 250m and 270m above MSL.Pajhar Nadi flowing all through the central part of the block, constitutes the main drainage system. Besides, there are a number of nalas present in the block. A few ponds are also located in the block.
	Rivers	Pajhar

5. Exploration					
Status	Explored				
Exploration Agency	MECL				
Total Number of Boreholes with meterage	181 Boreholes, 61685.80m				
Borehole Density	Approx. 12 Boreholes/sq.km.				
General Dip of Seams	The dip of beds varies from 1° to 4° towards south-west to SSW.				
General Strike Direction	The general strike of coal horizons is NW-SE in the major part of the block with minor swings.				
6. Coal Seams & Reserve					
Coal Seams	Thickness Range	Depth Range	Geological Reserve (MT)	Grade	
X LD	0.03-1.10	12.50-93.23		G14	
X LC	0.01-1.70	8.96-111.23		G8-G16	
X LB	0.03-1.45	9.22-140.34		G12-G15	
X LA	0.25 - 1.49	40.67-211.27	10.654	G8-G17	
X Top	0.17-3.54	51.58-224.76	24.543	G8-G17	
X Bot	0.57-5.49	57.30-230.40	62.946	G8-G16	
X Comb	2.93-7.52	60.58-217.77	11.324	G10-G15	
IX L2	0.04-1.03	69.50-241.45		G6-G17	
IX L1	0.58-2.02	88.20-258.66	8.347	G7-G17	
IX L	0.04-1.06	95.96-268.10	0.053	G9-G13	
IX	1.38-4.50	108.00-280.87	78.993	G7-G16	
VIII	0.05-2.08	122.94-299.50	11.188	G8-G17	
VIII L	0.48-4.31	132.79-309.40	61.039	G8-G16	
VII	1.54-7.28	151.23-330.75	109.841	G9-G16	
VI	3.56-12.57	170.50-346.95	178.731	G9-G15	
VI L	0.05-1.79	178.49-351.53	8.782	G9-G17	
V Top	0.09-4.00	190.29-371.95	12.025	G7-G17	
V L2	0.18-3.81	195.75-377.40	4.292	G9-G16	
V Mid	0.48-4.93	199.60-381.28	31.370	G6-G17	
V L1	0.06-3.62	206.24-392.80	7.662	G8-G16	
V Bot	0.05-1.16	213.04-398.65	0.854	G8-G17	
IV	0.10-0.63	256.80-405.50		G9-G11	
III L	0.05-0.45	279.07-427.58			
III	0.05-0.20	361.04-505.22			
II	0.05-0.78	462.60-504.60			
I L1	0.15-0.15	482.15-515.08			
I Top	0.31-0.57	522.69-563.98			
I Bot	0.30-0.50	546.50-586.00			
Total			622.662		

7.	Surface Constraints	Proposed alignment of rail corridor of NTPC MGR passes through the block. Another rail corridor passes along the northern boundary of the block.
8.	Grade of coal	G12 (Provisional) based on weighted average grade as per grade-wise data available in GR.
9.	Decision Support System (DSS) Analysis	Wildlife info: The polygon touches wildlife habitat of Sloth Bear, Dhole, Elephant
10.	Eco Sensitive Zone (ESZ)	Southern boundary of the block is approx. 45 km from the boundary of ESZ of Debrigarh. Southern boundary of the block is approx. 64 km from the boundary of ESZ of Sambalpur Elephant Region and NW boundary of the block is approx. 29 km from the boundary of buffer zone of un-notified Lemru Elephant Reserve.

PART B

Sr. No.	Features	Details
1	Tentative Peak rated Capacity	1.74 MTPA

Note:

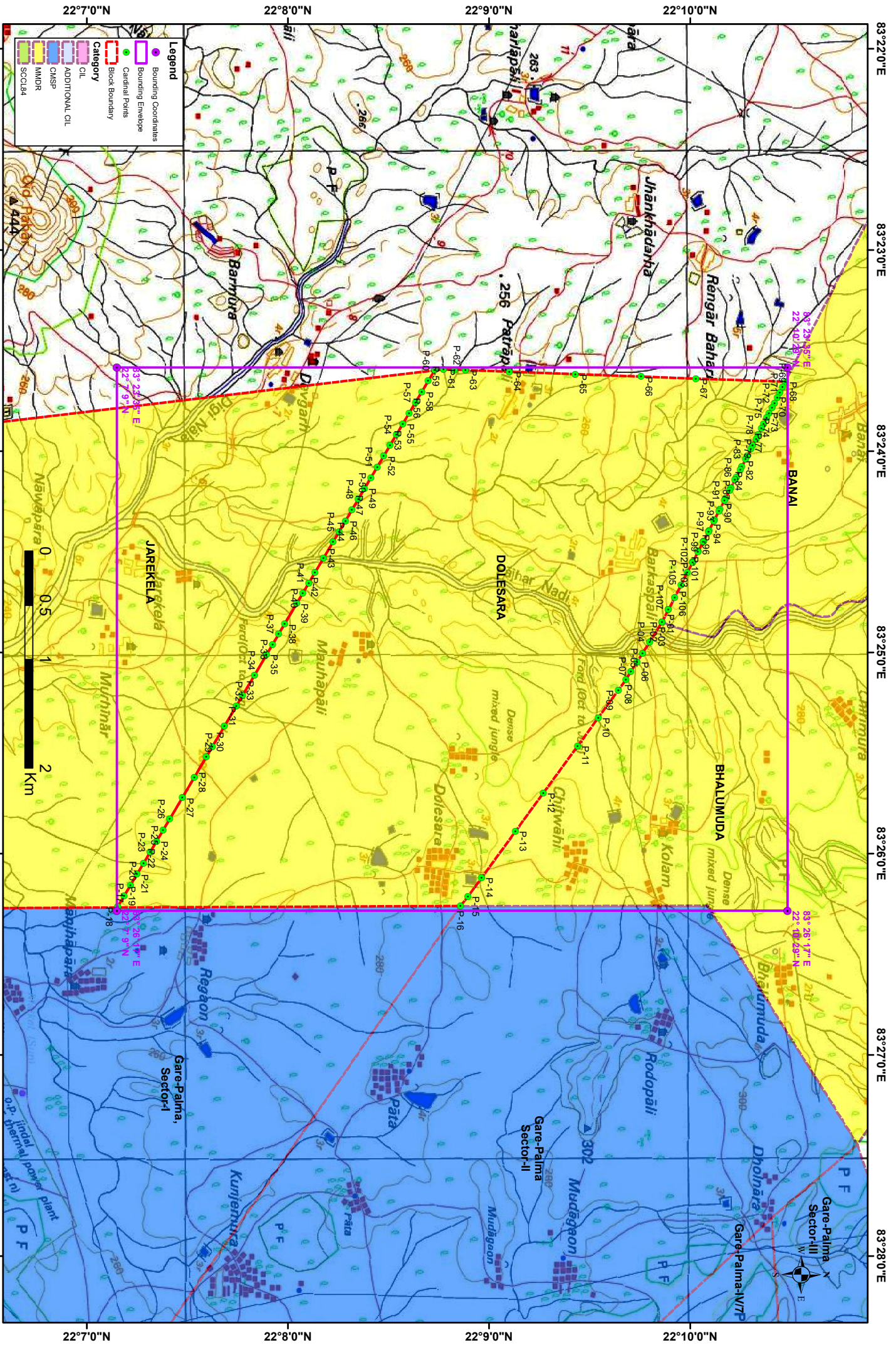
1. Above summary is compiled from “Geological Report On Detailed Exploration For Coal Dolesara Block, (Under MOU with CMPDIL) Mand-Raigarh Coalfield, District: Raigarh, Chhattisgarh. December-2019”

Disclaimer:

1. The analysis is done on Beta-version (Trial Version) of Decision Support System (DSS) of FSI / MOEF.
2. The Decision Rules for various parameters of this DSS System are controlled by FSI.
3. CMPDI only runs this DSS to obtain the status of any block based on these Decision Rules.
4. The database of the Decision Rules is updated by FSI from time to time.
5. CMPDI does not own any responsibility for variation in the results which are based on the Decision Rules of the FSI DSS in case of any updation of the database at FSI end.
6. ESZ analysis and tiger habitat/ corridor given here is based on the information available in public domain. Bidders are encouraged to verify this information and any other information additionally available.

Dolesara Block, Mand Raigarh Coalfield

FOR INTERNAL/RESTRICTED USE ONLY



Note: The map is prepared on WGS84 coordinate system.

Provisional Cardinal Points of Dolesara Block		
POINT_ID	LONGITUDE	LATITUDE
P-01	83° 24' 47.242" E	22° 9' 53.456" N
P-02	83° 24' 50.917" E	22° 9' 51.567" N
P-03	83° 24' 50.917" E	22° 9' 51.574" N
P-04	83° 24' 56.811" E	22° 9' 47.882" N
P-05	83° 25' 0.174" E	22° 9' 45.776" N
P-06	83° 25' 2.810" E	22° 9' 44.124" N
P-07	83° 25' 5.711" E	22° 9' 42.294" N
P-08	83° 25' 8.122" E	22° 9' 40.784" N
P-09	83° 25' 11.232" E	22° 9' 38.535" N
P-10	83° 25' 19.415" E	22° 9' 32.569" N
P-11	83° 25' 27.840" E	22° 9' 26.427" N
P-12	83° 25' 41.881" E	22° 9' 16.188" N
P-13	83° 25' 53.346" E	22° 9' 7.829" N
P-14	83° 26' 7.154" E	22° 8' 57.759" N
P-15	83° 26' 12.770" E	22° 8' 53.663" N
P-16	83° 26' 15.580" E	22° 8' 51.495" N
P-17	83° 26' 16.036" E	22° 7' 9.197" N
P-18	83° 26' 15.809" E	22° 7' 9.241" N
P-19	83° 26' 12.612" E	22° 7' 11.133" N
P-20	83° 26' 9.415" E	22° 7' 13.025" N
P-21	83° 26' 6.125" E	22° 7' 14.976" N
P-22	83° 26' 2.834" E	22° 7' 16.927" N
P-23	83° 25' 59.544" E	22° 7' 18.878" N
P-24	83° 25' 56.254" E	22° 7' 20.829" N
P-25	83° 25' 52.963" E	22° 7' 22.780" N
P-26	83° 25' 49.673" E	22° 7' 24.731" N
P-27	83° 25' 43.333" E	22° 7' 28.478" N
P-28	83° 25' 37.234" E	22° 7' 32.072" N
P-29	83° 25' 31.135" E	22° 7' 35.665" N
P-30	83° 25' 28.085" E	22° 7' 37.462" N
P-31	83° 25' 21.986" E	22° 7' 41.055" N
P-32	83° 25' 15.887" E	22° 7' 44.648" N
P-33	83° 25' 12.837" E	22° 7' 46.444" N
P-34	83° 25' 6.738" E	22° 7' 50.037" N
P-35	83° 25' 0.638" E	22° 7' 53.630" N
P-36	83° 24' 57.589" E	22° 7' 55.427" N
P-37	83° 24' 54.539" E	22° 7' 57.223" N
P-38	83° 24' 51.483" E	22° 7' 59.027" N
P-39	83° 24' 45.370" E	22° 8' 2.633" N
P-40	83° 24' 42.314" E	22° 8' 4.437" N
P-41	83° 24' 39.258" E	22° 8' 6.240" N
P-42	83° 24' 36.201" E	22° 8' 8.043" N
P-43	83° 24' 31.862" E	22° 8' 10.603" N
P-44	83° 24' 27.033" E	22° 8' 13.453" N
P-45	83° 24' 23.976" E	22° 8' 15.256" N
P-46	83° 24' 20.760" E	22° 8' 17.157" N
P-47	83° 24' 17.544" E	22° 8' 19.058" N
P-48	83° 24' 14.328" E	22° 8' 20.958" N

Provisional Cardinal Points of Dolesara Block		
POINT_ID	LONGITUDE	LATITUDE
P-49	83° 24' 11.112" E	22° 8' 22.859" N
P-50	83° 24' 7.896" E	22° 8' 24.759" N
P-51	83° 24' 4.680" E	22° 8' 26.660" N
P-52	83° 24' 1.464" E	22° 8' 28.561" N
P-53	83° 23' 58.247" E	22° 8' 30.461" N
P-54	83° 23' 55.031" E	22° 8' 32.362" N
P-55	83° 23' 51.815" E	22° 8' 34.262" N
P-56	83° 23' 48.599" E	22° 8' 36.163" N
P-57	83° 23' 45.418" E	22° 8' 38.054" N
P-58	83° 23' 42.238" E	22° 8' 39.945" N
P-59	83° 23' 39.058" E	22° 8' 41.837" N
P-60	83° 23' 35.878" E	22° 8' 43.728" N
P-61	83° 23' 35.557" E	22° 8' 46.417" N
P-62	83° 23' 35.679" E	22° 8' 49.690" N
P-63	83° 23' 35.800" E	22° 8' 52.963" N
P-64	83° 23' 36.285" E	22° 9' 6.055" N
P-65	83° 23' 37.013" E	22° 9' 25.692" N
P-66	83° 23' 37.741" E	22° 9' 45.330" N
P-67	83° 23' 38.348" E	22° 10' 1.695" N
P-68	83° 23' 39.268" E	22° 10' 28.369" N
P-69	83° 23' 40.870" E	22° 10' 27.547" N
P-70	83° 23' 42.432" E	22° 10' 26.745" N
P-71	83° 23' 43.945" E	22° 10' 25.968" N
P-72	83° 23' 45.596" E	22° 10' 25.120" N
P-73	83° 23' 47.020" E	22° 10' 24.389" N
P-74	83° 23' 48.760" E	22° 10' 23.496" N
P-75	83° 23' 50.095" E	22° 10' 22.810" N
P-76	83° 23' 51.924" E	22° 10' 21.871" N
P-77	83° 23' 53.170" E	22° 10' 21.231" N
P-78	83° 23' 55.088" E	22° 10' 20.247" N
P-79	83° 23' 56.244" E	22° 10' 19.653" N
P-80	83° 23' 58.251" E	22° 10' 18.622" N
P-81	83° 23' 59.319" E	22° 10' 18.074" N
P-82	83° 24' 1.415" E	22° 10' 16.997" N
P-83	83° 24' 2.394" E	22° 10' 16.495" N
P-84	83° 24' 4.579" E	22° 10' 15.373" N
P-85	83° 24' 5.469" E	22° 10' 14.916" N
P-86	83° 24' 7.743" E	22° 10' 13.748" N
P-87	83° 24' 8.544" E	22° 10' 13.337" N
P-88	83° 24' 10.906" E	22° 10' 12.123" N
P-89	83° 24' 11.618" E	22° 10' 11.758" N
P-90	83° 24' 14.070" E	22° 10' 10.499" N
P-91	83° 24' 14.693" E	22° 10' 10.179" N
P-92	83° 24' 17.234" E	22° 10' 8.874" N
P-93	83° 24' 17.768" E	22° 10' 8.600" N
P-94	83° 24' 20.398" E	22° 10' 7.249" N
P-95	83° 24' 20.842" E	22° 10' 7.021" N
P-96	83° 24' 23.561" E	22° 10' 5.625" N

Provisional Cardinal Points of Dolesara Block		
POINT_ID	LONGITUDE	LATITUDE
P-97	83° 24' 23.917" E	22° 10' 5.442" N
P-98	83° 24' 26.725" E	22° 10' 4.000" N
P-99	83° 24' 26.992" E	22° 10' 3.863" N
P-100	83° 24' 29.888" E	22° 10' 2.375" N
P-101	83° 24' 30.066" E	22° 10' 2.284" N
P-102	83° 24' 33.052" E	22° 10' 0.750" N
P-103	83° 24' 33.141" E	22° 10' 0.705" N
P-104	83° 24' 36.216" E	22° 9' 59.125" N
P-105	83° 24' 39.891" E	22° 9' 57.236" N
P-106	83° 24' 43.566" E	22° 9' 55.346" N
P-107	83° 24' 47.242" E	22° 9' 53.456" N