

**BINJA BLOCK SUMMARY
PART A**

Sl. No.	Features	Details
1.	Location	
	Coal Block	Binja
	Latitude	23° 39' 19" N-23° 40' 3" N (Provisional)
	Longitude	85° 13' 4" E-85° 13' 42" E (Provisional)
	Topo Sheet No.	73E/2
	Coalfield	South Karanpura
	Villages	Binja, Haphua, Palu
	Tehsil/Taluka	Burmu, Patratu
	District	Ramgarh
	State	Jharkhand
2.	Connectivity with Block	
	Nearest Rail Head	Patratu Railway Station lying on Barkakana - Dehri-on-Sone section of Eastern Railway is about 18 km east of the area of investigation while Hendgiri Railway Station is the nearest railhead in the north.
	Road	The present area is well connected with rail and all weather road of Haphua - Patratu Gram Sarak Yojana with Patratu - Ranchi PWD road. Patratu is about 50 km from Ranchi and 30 km from Ramgarh Cant. and is well connected by road and rail.
	Airport	
3.	Area	
	Geological Block Area	1.33 sq. km. (As per shape file . Refer note below)
	Green Cover	Nil
	Non-Forest Area	1.33 sq. km
4.	Climate and Topography	
	Average Annual Rainfall	-
	Temperature (Min. — Max.)	4°C- 42°C
	Local Surface Drainage Channels	Batuka nala flowing from south to north joins Damoadar River near village Tokisud in the north outside the area.
	Rivers	

5.	Exploration			
	Status	Regionally Explored		
	Exploration Agency	GSI		
	Total Number of Boreholes with	1 Boreholes & 781.00 m (SKB-3)		
	Borehole Density	Approx. 1 borehole/ sq. km.		
	General Dip of Seams	5° - 6° dip towards south with minor local variations near the boundary of basement.		
	General Strike Direction	The rocks of the area in general show strike variation from ENE-WSW to NE-SW		
	Faults	A fault (F1-F1) trending approximately NE-SW having throw of about 150-180m towards SE causing thickening of Raniganj Formation towards Eastern part of the Block was delineated.		
6.	Coal Seams & Reserve			
	Coal Seams	Thickness Range (m)	Depth Range (m)	Resources (MT) (Indicated) Grade
	Barren Measure Seam	0.6	156.9	G13-G14
	Barren Measure Seam	1.47-1.92	252.30-553.25	G7-G10
	Barren Measure Seam	0.84-0.93	301.01-345.90	G13-G14
	Saunda Top (B-X)	1.10-3.25	427.80-751.07	G6-G10
	Upper Sayal (B-IX)	3.24-4.43	439.67-776.80	G6-G10
	Balkudra (B-VIII)	4.49-5.85	473.75-530.49	G6-G12
	Balkudra A (B-VII)	0.62-1.28	510.70-557.38	G9-G12
	Kurse (B-VI)	1.20-3.00	517.15-567.45	G7-G14
	Hathidari (B-V)	2.88-3.50	562.75-587.90	G7-G10
	Bansgarha (B-IV)	7.35-7.95	567.75-598.70	G9-G14
	Argada (B-III)	6.37	619.25	G7-G12
	Argada A (B-II)	4.00	660.8	G9-G10
	Total			50 (Tentative)
	Surface Constraints	-		
8.	Grade of coal	G9 (Provisional), Based on seam-wise grade-wise data available in Regional GR.		
9.	Decision Support System (DSS) Analysis	-		
10.	Eco Sensitive Zone (ESZ)	Approx. 36 kms to ESZ (Hazaribagh) in North direction		

Note:

1. The summary has been compiled from “Report on the Regional Exploration for Coal in Binja Block, South Karanpura Coalfield, Ranchi and Ramgarh (Erstwhile Hazaribagh) Districts, Jharkhand-2011”.

Disclaimer:

1. The analysis is done on Beta-version (Trial Version) of Decision Support System (DSS) of FSI / MOEF.
2. The Decision Rules for various parameters of this DSS System are controlled by FSI.
3. CMPDI only runs this DSS to obtain the status of any block based on these Decision Rules.
4. The database of the Decision Rules is updated by FSI from time to time.
5. CMPDI does not own any responsibility for variation in the results which are based on the Decision Rules of the FSI DSS in case of any updation of the database at FSI end.
6. ESZ analysis and tiger habitat/ corridor given here is based on the information available in public domain. Bidders are encouraged to verify this information and any other information additionally available.

Binja Block, South Karanpura Coalfield

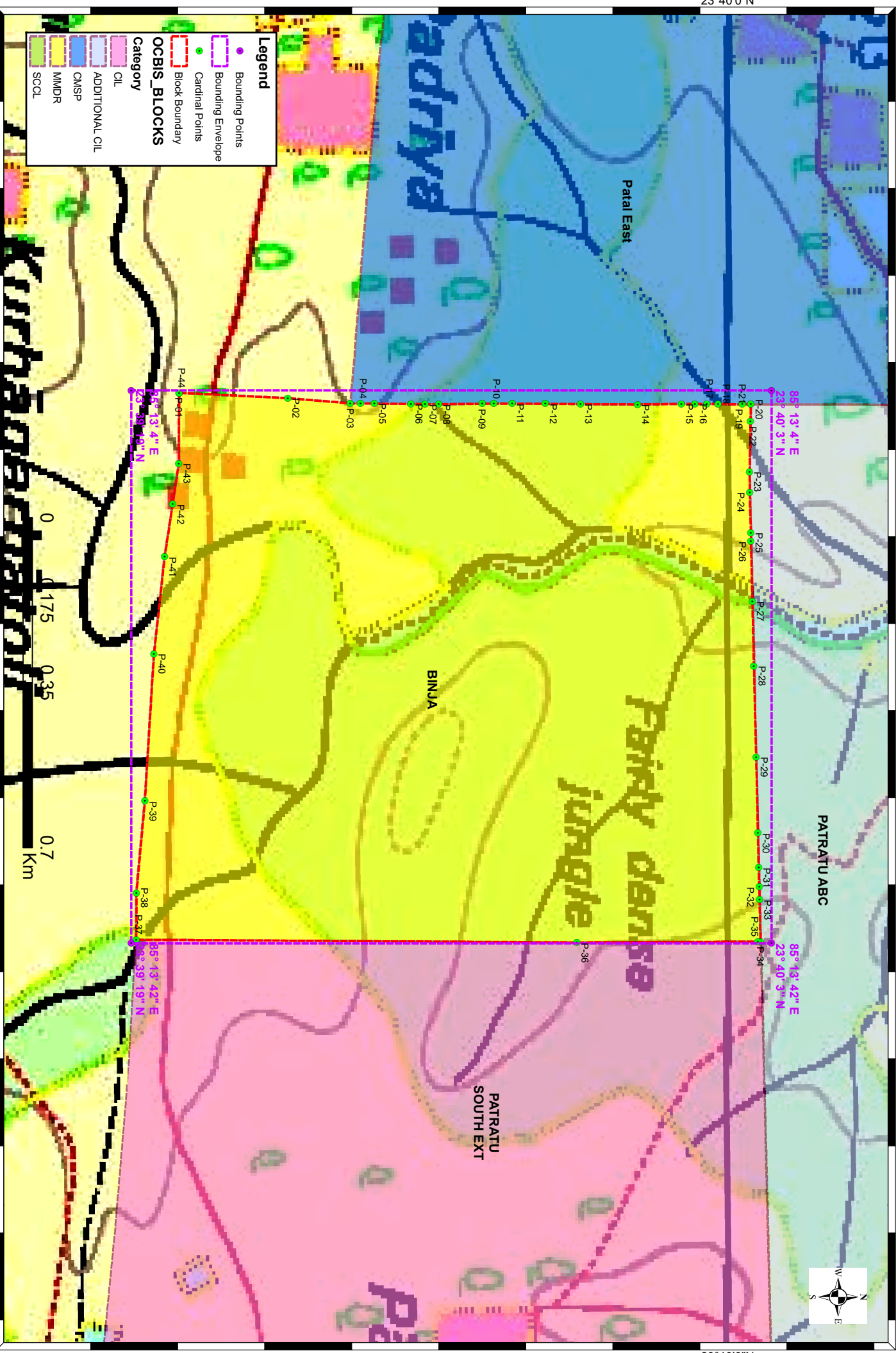
FOR INTERNAL/RESTRICTED USE ONLY

85°13'0"E

85°14'0"E

23°40'0"N

23°40'0"N



Legend

- Bounding Points
- Bounding Envelope
- Cardinal Points
- Block Boundary

OCBS_BLOCKS Category

- CIL
- ADDITIONAL CIL
- CMSP
- M/MDR
- SCCL

Patral East

PATRATU ABC

PATRATU SOUTH EXT

BINJA

85°13'4"E
23°40'3"N

P-20 P-21 P-22 P-23 P-24 P-25 P-26 P-27 P-28 P-29 P-30 P-31 P-32 P-33 P-34 P-35 P-36

85°13'42"E
23°40'3"N

85°13'4"E
23°39'19"N

P-01 P-02 P-03 P-04 P-05 P-06 P-07 P-08 P-09 P-10 P-11 P-12 P-13 P-14 P-15 P-16 P-17 P-18 P-19

P-44 P-43 P-42 P-41 P-40 P-39 P-38 P-37

85°13'42"E
23°39'19"N



85°13'0"E

85°14'0"E

Provisional Cardinal Points for BINJA Block

POINT NO	Longitude (WGS84)	Latitude (WGS84)
P-1	85° 13' 4.168" E	23° 39' 22.282" N
P-2	85° 13' 4.535" E	23° 39' 29.768" N
P-3	85° 13' 4.888" E	23° 39' 34.059" N
P-4	85° 13' 4.894" E	23° 39' 34.754" N
P-5	85° 13' 4.901" E	23° 39' 35.704" N
P-6	85° 13' 4.931" E	23° 39' 38.223" N
P-7	85° 13' 4.943" E	23° 39' 39.200" N
P-8	85° 13' 4.955" E	23° 39' 40.132" N
P-9	85° 13' 4.920" E	23° 39' 43.131" N
P-10	85° 13' 4.911" E	23° 39' 43.928" N
P-11	85° 13' 4.904" E	23° 39' 45.175" N
P-12	85° 13' 4.921" E	23° 39' 47.448" N
P-13	85° 13' 4.940" E	23° 39' 49.890" N
P-14	85° 13' 4.966" E	23° 39' 53.796" N
P-15	85° 13' 4.933" E	23° 39' 56.802" N
P-16	85° 13' 4.926" E	23° 39' 57.754" N
P-17	85° 13' 4.933" E	23° 39' 58.564" N
P-18	85° 13' 4.940" E	23° 39' 59.347" N
P-19	85° 13' 4.956" E	23° 40' 0.991" N
P-20	85° 13' 4.955" E	23° 40' 1.581" N
P-21	85° 13' 4.955" E	23° 40' 1.589" N
P-22	85° 13' 6.118" E	23° 40' 1.560" N
P-23	85° 13' 9.607" E	23° 40' 1.499" N
P-24	85° 13' 11.005" E	23° 40' 1.512" N
P-25	85° 13' 13.778" E	23° 40' 1.585" N
P-26	85° 13' 14.383" E	23° 40' 1.600" N
P-27	85° 13' 18.498" E	23° 40' 1.694" N
P-28	85° 13' 22.950" E	23° 40' 1.801" N
P-29	85° 13' 29.196" E	23° 40' 1.952" N
P-30	85° 13' 34.432" E	23° 40' 2.079" N
P-31	85° 13' 36.793" E	23° 40' 2.136" N
P-32	85° 13' 38.115" E	23° 40' 2.168" N
P-33	85° 13' 38.998" E	23° 40' 2.189" N
P-34	85° 13' 41.901" E	23° 40' 2.260" N
P-35	85° 13' 41.882" E	23° 40' 2.073" N
P-36	85° 13' 41.940" E	23° 39' 49.630" N
P-37	85° 13' 41.755" E	23° 39' 19.342" N
P-38	85° 13' 38.534" E	23° 39' 19.357" N
P-39	85° 13' 32.215" E	23° 39' 19.933" N
P-40	85° 13' 22.112" E	23° 39' 20.558" N
P-41	85° 13' 15.440" E	23° 39' 21.293" N
P-42	85° 13' 11.817" E	23° 39' 21.842" N
P-43	85° 13' 9.026" E	23° 39' 22.264" N