

Bigga-Abhaysingpura Lignite Block Summary

Sr.No.	Features	Details
1	Location	
	Lignite Block	Bigga Abhaysingpura
	Latitude	Latitude: N 27° 56' 57" to 28° 02' 05"
	Longitude	Longitude : E 74° 04' 30" to 74° 09' 25"
	Topo Sheet No.	44 L/4 & 45 I/4
	Lignite Field	Bikaner Lignite Field
	Villages	Abhaysingpura, Riri
	Tehsil/Taluka	Sri-Dungargarh
	District	Bikaner
	State	Rajasthan
2	Connectivity with Block	
	Nearest Rail Head	Bigga on Bikaner-Ratangarh line
	Road	The block is approachable by Bikaner – Sri Dungargarh National Highway No.11 and by Bikaner – Sri Dungargarh rail line of Western Railway.
	Airport	Bikaner
3	Area	
	Geological Block Area	10.7 Sq.km
	Forest Area	No forest as per Toposheet
	Non-Forest Area	10.7 Sq.km
4	Climate and Topography	
	Average Annual Rainfall	230 mm.
	Temperature (Min.- Max. in°C)	5 to 48
	Local Surface Drainage Channels	The area is devoid of any drainage pattern. The local nalas fed by rain water die out at very short distances due to sandy nature of the surface.
	Rivers	Nil
5	Exploration	
	Status	Indicated Category, (800m and 400m borehole spacing)
	Exploration Agency	Mineral Exploration Corporation Ltd., (MECL)
	Explored Area (as per GR)	50 Sq. km (Appx.) as per GR.
	Total Number of Boreholes with metreage	68 boreholes & 12723.40 m
	Borehole Density	1.36
	General Dip of Seams	The general dip of the bed is due north-west to north. & it varies from 1.5° to 3°.
	General Strike Direction	NE-SW with local undulations and warping
	Faults	Devoid of fault
	Depth range of Lignite seam	99.30m to 178.40m

6	Lignite Reserve: Indicated Category.				
	Grade-wise	Grade: GCV Range (K.Cal/Kg.)	Area (Sq km)	Gross Reserves (MT)	Reserves %
		C: 1001-2000	1.400	11.077	24.82
		B: 2001-3000	2.776	33.561	75.18
		Total	4.476	44.638	100.00
	Ratio-wise	Lignite to OB+IB Ratio	Area (Sq km)	Gross Reserves (m.t.)	Reserves %
		< 1 : 10	0.477	9.326	20.89
		1 : 10 – 1 : 15	1.267	18.495	41.43
		> 1 : 15	2.732	16.817	37.68
		Total	4.476	44.638	100.00
7	Surface Constraints	Nil			
8	Grade of Lignite	B (Provisional). Based on Grade wise data available in GR.			
9	Decision Support System (DSS) Analysis	-			
10	Eco Sensitive Zone (ESZ)	Talchhapar WLS is at about 33Km in the South-East direction from the block.			
11	Remarks	Regional exploration on 800 m and 400 m grid interval completed. Detailed exploration to be carried out.			

Note:

1. The summary has been compiled from “Geological Report on Exploration for Lignite, Bigga Abhaysingpura Block, Bikaner District, Rajasthan-March 2008, prepared by Mineral Exploration Corporation Ltd., Nagpur.
2. The Exploration block area mentioned above is as given in the Geological report, which may vary after DGPS survey.

Disclaimer:

1. The analysis is done on Beta-version (Trial Version) of Decision Support System (DSS) of FSI/ MOEF.
2. The Decision Rules for various parameters of this DSS System are controlled by FSI.
3. CMPDI only runs this DSS to obtain the status of any block based on these Decision Rules.
4. The database of the Decision Rules is updated by FSI from time to time.
5. CMPDI does not own any responsibility for variation in the results which are based on the decision Rules of the FSI DSS in case of any updation of the database at FSI end.
6. ESZ analysis and tiger habitat/ corridor given here is based on the information available in public domain. Bidders are encouraged to verify this information and any other information additionally available.

**BIGGA ABHAISINGHPURA LIGNITE BLOCK, BIKANER LIGNITE FIELD,
BIKANER DISTRICT, RAJASTHAN**

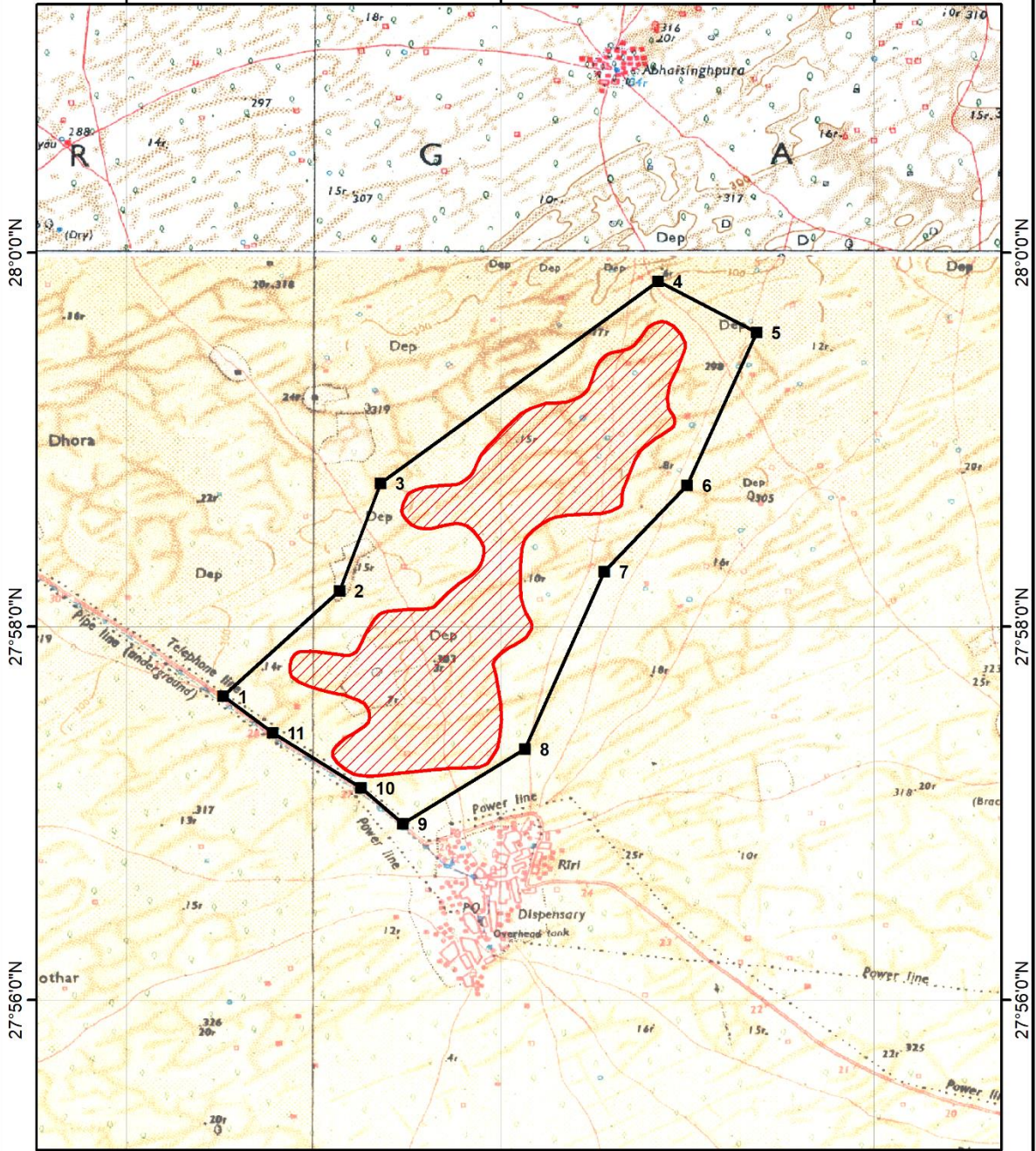
Part of SOI Toposheet 44 L/4 and 45 I/1



74°4'0"E

74°6'0"E

74°8'0"E



28°0'0"N

28°0'0"N

27°58'0"N

27°58'0"N

27°56'0"N

27°56'0"N

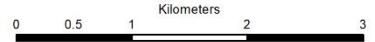
74°4'0"E

74°6'0"E

74°8'0"E

Legend

- Exploration Block Boundary
- Lignite Development Boundary



**Provisional cardinal Points for Bigga-Abhaisinghpura Lignite Block, Bikaner District,
Rajasthan.**

Boundary Points	Latitude (DMS)	Longitude (DMS)
1	27° 57' 37.553" N	74° 4' 30.960" E
2	27° 58' 11.526" N	74° 5' 8.312" E
3	27° 58' 46.077" N	74° 5' 21.501" E
4	27° 59' 50.908" N	74° 6' 50.612" E
5	27° 59' 34.423" N	74° 7' 22.249" E
6	27° 58' 45.278" N	74° 6' 59.977" E
7	27° 58' 17.598" N	74° 6' 33.383" E
8	27° 57' 20.610" N	74° 6' 7.874" E
9	27° 56' 56.656" N	74° 5' 28.659" E
10	27° 57' 8.156" N	74° 5' 15.181" E
11	27° 57' 25.822" N	74° 4' 46.757" E