

**Bartap Block Summary**  
**PART A**

Sr. No.	Features	Details
<b>1.</b>	<b>Location</b>	
	Coal Block	<b>Bartap Block</b>
	Latitude	21° 48' 39" N-21° 51' 39" N (Provisional)
	Longitude	83° 47' 0" E-83° 50' 0" E (Provisional)
	Topo Sheet No.	640/13
	Coalfield	Ib Valley Coalfield
	Villages	
	Tehsil/Taluka	Lakhanpur, Belpahar
	District	Jharsuguda
	State	Odisha
<b>2.</b>	<b>Connectivity with Block</b>	
	Nearest Rail Head	Belpahar is the nearest railway station on the Howrah-Bombay main line of the South-Eastern Railway which is situated east of the block. The other railway station, Jharsuguda is about 25km away from this area.
	Road	The area is well connected by road and rail network. The main road within the block is connected to the National Highway-49 which passes through the eastern side of the present area. The villages within the block are well connected by fair weather metalled/earth road roads.
	Airport	
<b>3.</b>	<b>Area</b>	
	Geological Block Area	13.6 sq km (As per shape file. Refer note below)
	Forest Area	Approx. 39% (As per FSI map)
	Non-Forest Area	
<b>4.</b>	<b>Climate and Topography</b>	
	Average Annual Rainfall	-
	Temperature (Min. — Max.)	7 °C-45 °C
	Local Surface Drainage Channels	The drainage pattern of the area is sub-dendritic and is controlled mainly by lithology and structure. Hinjankharu Jhor, a perineal nala flows from west to east in the block area, a tributary of Lilari Nala, is the main drainage of the area. Lilari nala, a tributary of Ib River flows from northeastern corner of the Block.
	Rivers	-
<b>5.</b>	<b>Exploration</b>	
	Status	Regionally Explored
	Exploration Agency	GSI

	Total Number of Boreholes with meterage	11 Boreholes; 7872.95 m (IBBR-1 to 8; IBGD-1, 6 & 7)			
	Borehole Density	Approx. 0.8 Boreholes per sq km			
	General Dip of Seams	3° to 4° dip towards northwest. It gradually increasing from 2.5° (at Raniganj Formation) to 4.5° (Bottom part of Barakar Formation) with depth.			
	General Strike Direction	The general strike of beds is NE-SW			
	Faults	A couple of faults i) N86°W-S86°E trending northerly dipping concealed / subsurface normal fault (F1 - F1) having average throw of 45m and ii) N50°W-S50°E trending southerly dipping concealed/subsurface normal fault (F2 – F2) having maximum throw of 15m are present in the central and south-central portion of the Block respectively.			
<b>6.</b>	<b>Coal Seams &amp; Reserve</b>				
	Coal Seams/Zones	Thickness Range (m)	Depth Range (m)	Resources (mt)	Grade
	R-IV	1.16-16.35	13.84-35.96		F-G
	R-III	1.04	34.82-35.86		E
	R-II	0.93-17.41	25.25-127.23		F-G
	R-I	4.32-37.04	15.12-164.19		E-G
	Belpahar Top	0.52-10.58	72.99-215.79		D-G
	Belpahar Mid	3.21-12.25	108.31-270.81		C-G
	Belpahar Bot	1.56-3.80	148.01-298.27		E-F
	Parkhani Top	23.98-69.96	222.35-368.24		E-G
	Parkhani Bot	14.01-65.06	246.88-440.77		D-G
	Lajkura Top	13.20-22.01	357.72-539.97		D-G
	Lajkura Bot	42.30-45.55	387.28-604.00		C-G
	Rampur Top	0.62-24.07	490.58-676.73		E-G
	Rampur Bot	16.48-23.75	518.81-737.44		D-G
	Ib	0.50-33.19	582.16-765.55		B-F
	<b>Total</b>			<b>2500</b>	
<b>7.</b>	<b>Surface Constraints</b>	-			
<b>8.</b>	<b>Grade of coal</b>	G11 (Provisional) based on weighted average grade as per grade-wise data available in Regional GRs.			
<b>9.</b>	<b>Decision Support System (DSS) Analysis</b>	Wildlife info: The polygon touches Wildlife Habitat(s)- Sloth Bear			
<b>10.</b>	<b>Eco Sensitive Zone (ESZ)</b>	SW boundary of the block is approx. 14 km from the boundary of ESZ of Debrigarh. Eastern boundary of the block is approx. 19 km from the boundary of ESZ of Sambalpur Elephant Region.			

**Note:**

1. The summary has been compiled from “Final Report on Regional Exploration for Coal in Bartap Block, Ib-River Coalfield, Jharsuguda District, Odisha (G2 Stage). December-2017”

and “Final Report on Regional Exploration for Coal in Grindola Block, Ib-River Coalfield, Jharsuguda District, Odisha. 2015”

**Disclaimer:**

1. The analysis is done on Beta-version (Trial Version) of Decision Support System (DSS) of FSI / MOEF.
2. The Decision Rules for various parameters of this DSS System are controlled by FSI.
3. CMPDI only runs this DSS to obtain the status of any block based on these Decision Rules.
4. The database of the Decision Rules is updated by FSI from time to time.
5. CMPDI does not own any responsibility for variation in the results which are based on the Decision Rules of the FSI DSS in case of any updation of the database at FSI end.
6. ESZ analysis and tiger habitat/ corridor given here is based on the information available in public domain. Bidders are encouraged to verify this information and any other information additionally available.

21°49'0"N

21°50'0"N

21°51'0"N

21°52'0"N

83°46'0"E

83°47'0"E

83°48'0"E

83°49'0"E

83°50'0"E

83°51'0"E

83°46'0"E

83°47'0"E

83°48'0"E

83°49'0"E

83°50'0"E

83°51'0"E

# Bartap Block, Ib Valley Coalfield

FOR INTERNAL/RESTRICTED USE ONLY

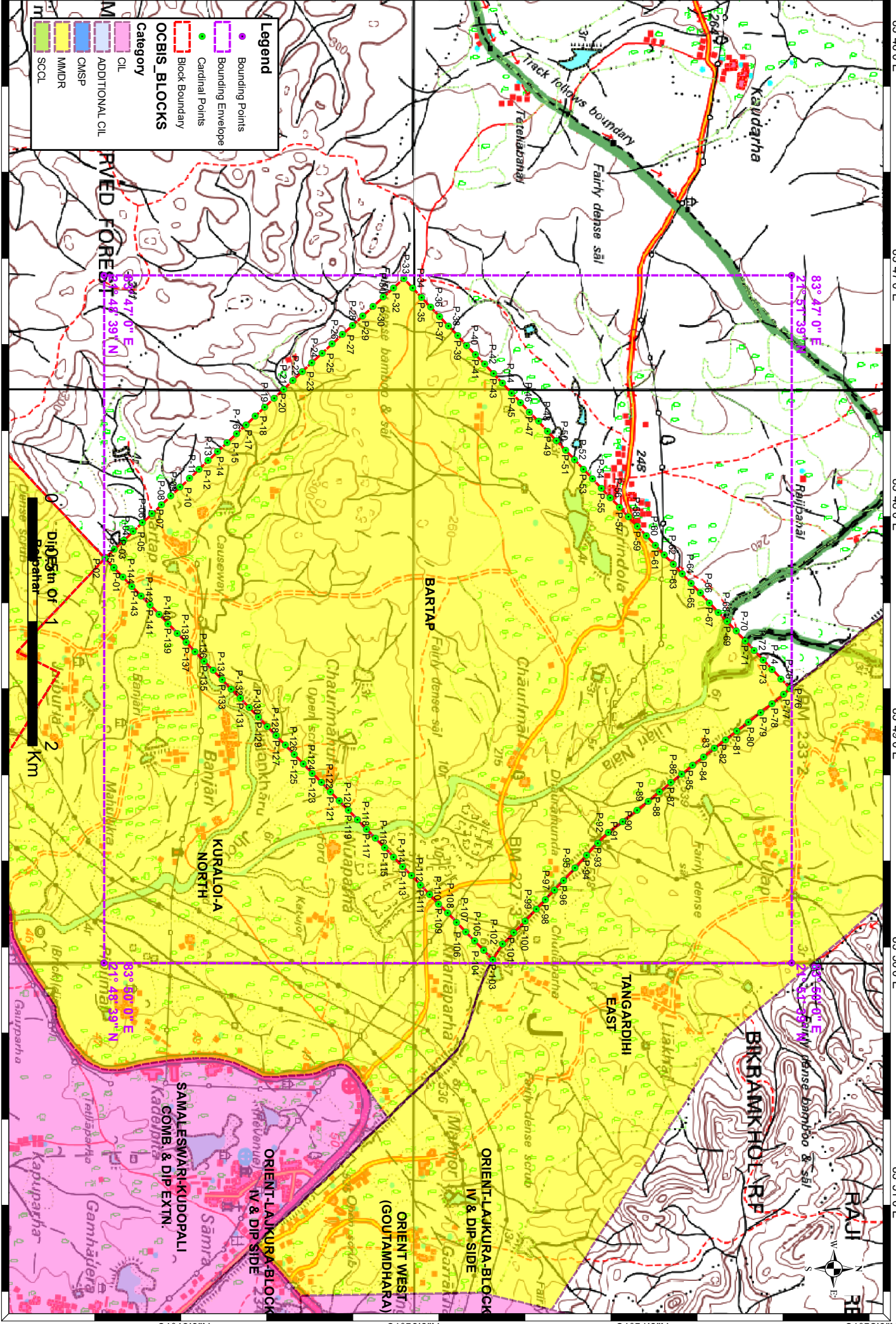
**Legend**

- Bounding Points
- Bounding Envelope
- Cardinal Points
- Block Boundary

**OCBIS\_BLOCKS**

**Category**

- CIL
- ADDITIONAL CIL
- CMSP
- MMDR
- SCCL



21°49'0"N

21°50'0"N

21°51'0"N

21°52'0"N

**Provisional Cardinal Points for BARTAP Block**

POINT NO	Longitude (WGS84)	Latitude (WGS84)
P-1	83° 48' 16.513" E	21° 48' 41.599" N
P-2	83° 48' 14.071" E	21° 48' 39.238" N
P-3	83° 48' 11.742" E	21° 48' 41.699" N
P-4	83° 48' 9.413" E	21° 48' 44.159" N
P-5	83° 48' 7.084" E	21° 48' 46.619" N
P-6	83° 48' 4.755" E	21° 48' 49.079" N
P-7	83° 48' 2.425" E	21° 48' 51.540" N
P-8	83° 48' 0.096" E	21° 48' 54.000" N
P-9	83° 47' 57.767" E	21° 48' 56.460" N
P-10	83° 47' 55.438" E	21° 48' 58.920" N
P-11	83° 47' 53.109" E	21° 49' 1.380" N
P-12	83° 47' 50.780" E	21° 49' 3.840" N
P-13	83° 47' 48.451" E	21° 49' 6.300" N
P-14	83° 47' 46.121" E	21° 49' 8.761" N
P-15	83° 47' 43.792" E	21° 49' 11.221" N
P-16	83° 47' 41.463" E	21° 49' 13.681" N
P-17	83° 47' 39.134" E	21° 49' 16.141" N
P-18	83° 47' 36.804" E	21° 49' 18.601" N
P-19	83° 47' 34.475" E	21° 49' 21.061" N
P-20	83° 47' 32.145" E	21° 49' 23.521" N
P-21	83° 47' 29.816" E	21° 49' 25.981" N
P-22	83° 47' 27.487" E	21° 49' 28.441" N
P-23	83° 47' 25.157" E	21° 49' 30.901" N
P-24	83° 47' 22.828" E	21° 49' 33.361" N
P-25	83° 47' 20.385" E	21° 49' 36.036" N
P-26	83° 47' 17.943" E	21° 49' 38.711" N
P-27	83° 47' 15.500" E	21° 49' 41.386" N
P-28	83° 47' 13.058" E	21° 49' 44.061" N
P-29	83° 47' 10.615" E	21° 49' 46.736" N
P-30	83° 47' 8.173" E	21° 49' 49.411" N
P-31	83° 47' 5.730" E	21° 49' 52.086" N
P-32	83° 47' 3.287" E	21° 49' 54.761" N
P-33	83° 47' 0.845" E	21° 49' 57.436" N
P-34	83° 47' 3.338" E	21° 49' 59.788" N
P-35	83° 47' 5.832" E	21° 50' 2.141" N
P-36	83° 47' 8.326" E	21° 50' 4.493" N
P-37	83° 47' 10.820" E	21° 50' 6.846" N
P-38	83° 47' 13.314" E	21° 50' 9.198" N
P-39	83° 47' 15.808" E	21° 50' 11.550" N
P-40	83° 47' 18.302" E	21° 50' 13.903" N
P-41	83° 47' 20.796" E	21° 50' 16.255" N
P-42	83° 47' 23.290" E	21° 50' 18.608" N
P-43	83° 47' 25.785" E	21° 50' 20.960" N
P-44	83° 47' 28.279" E	21° 50' 23.312" N
P-45	83° 47' 30.773" E	21° 50' 25.665" N
P-46	83° 47' 33.267" E	21° 50' 28.017" N
P-47	83° 47' 35.761" E	21° 50' 30.370" N

**Provisional Cardinal Points for BARTAP Block**

POINT NO	Longitude (WGS84)	Latitude (WGS84)
P-48	83° 47' 38.255" E	21° 50' 32.722" N
P-49	83° 47' 40.750" E	21° 50' 35.074" N
P-50	83° 47' 43.244" E	21° 50' 37.427" N
P-51	83° 47' 45.738" E	21° 50' 39.779" N
P-52	83° 47' 48.233" E	21° 50' 42.131" N
P-53	83° 47' 50.727" E	21° 50' 44.483" N
P-54	83° 47' 53.221" E	21° 50' 46.836" N
P-55	83° 47' 55.716" E	21° 50' 49.188" N
P-56	83° 47' 58.210" E	21° 50' 51.540" N
P-57	83° 48' 0.704" E	21° 50' 53.892" N
P-58	83° 48' 3.199" E	21° 50' 56.245" N
P-59	83° 48' 5.693" E	21° 50' 58.597" N
P-60	83° 48' 8.188" E	21° 51' 0.949" N
P-61	83° 48' 10.682" E	21° 51' 3.301" N
P-62	83° 48' 13.177" E	21° 51' 5.653" N
P-63	83° 48' 15.672" E	21° 51' 8.006" N
P-64	83° 48' 18.166" E	21° 51' 10.358" N
P-65	83° 48' 20.661" E	21° 51' 12.710" N
P-66	83° 48' 23.155" E	21° 51' 15.062" N
P-67	83° 48' 25.650" E	21° 51' 17.414" N
P-68	83° 48' 28.145" E	21° 51' 19.766" N
P-69	83° 48' 30.640" E	21° 51' 22.119" N
P-70	83° 48' 33.134" E	21° 51' 24.471" N
P-71	83° 48' 35.629" E	21° 51' 26.823" N
P-72	83° 48' 38.124" E	21° 51' 29.175" N
P-73	83° 48' 40.619" E	21° 51' 31.527" N
P-74	83° 48' 43.113" E	21° 51' 33.879" N
P-75	83° 48' 45.608" E	21° 51' 36.231" N
P-76	83° 48' 48.103" E	21° 51' 38.583" N
P-77	83° 48' 49.636" E	21° 51' 36.883" N
P-78	83° 48' 51.995" E	21° 51' 33.876" N
P-79	83° 48' 54.353" E	21° 51' 30.869" N
P-80	83° 48' 56.914" E	21° 51' 27.601" N
P-81	83° 48' 59.193" E	21° 51' 24.658" N
P-82	83° 49' 1.472" E	21° 51' 21.715" N
P-83	83° 49' 3.751" E	21° 51' 18.772" N
P-84	83° 49' 5.997" E	21° 51' 15.912" N
P-85	83° 49' 8.243" E	21° 51' 13.053" N
P-86	83° 49' 10.490" E	21° 51' 10.193" N
P-87	83° 49' 12.736" E	21° 51' 7.333" N
P-88	83° 49' 15.173" E	21° 51' 4.390" N
P-89	83° 49' 17.609" E	21° 51' 1.446" N
P-90	83° 49' 20.046" E	21° 50' 58.503" N
P-91	83° 49' 22.908" E	21° 50' 54.746" N
P-92	83° 49' 25.769" E	21° 50' 50.989" N
P-93	83° 49' 28.479" E	21° 50' 48.256" N
P-94	83° 49' 31.758" E	21° 50' 45.262" N

**Provisional Cardinal Points for BARTAP Block**

POINT NO	Longitude (WGS84)	Latitude (WGS84)
P-95	83° 49' 35.038" E	21° 50' 42.268" N
P-96	83° 49' 38.317" E	21° 50' 39.274" N
P-97	83° 49' 40.828" E	21° 50' 36.910" N
P-98	83° 49' 43.339" E	21° 50' 34.546" N
P-99	83° 49' 45.850" E	21° 50' 32.182" N
P-100	83° 49' 48.912" E	21° 50' 29.212" N
P-101	83° 49' 51.975" E	21° 50' 26.242" N
P-102	83° 49' 55.037" E	21° 50' 23.272" N
P-103	83° 49' 59.096" E	21° 50' 20.742" N
P-104	83° 49' 56.653" E	21° 50' 18.381" N
P-105	83° 49' 54.210" E	21° 50' 16.021" N
P-106	83° 49' 51.767" E	21° 50' 13.661" N
P-107	83° 49' 49.324" E	21° 50' 11.300" N
P-108	83° 49' 46.882" E	21° 50' 8.940" N
P-109	83° 49' 44.439" E	21° 50' 6.580" N
P-110	83° 49' 41.996" E	21° 50' 4.219" N
P-111	83° 49' 39.553" E	21° 50' 1.859" N
P-112	83° 49' 37.110" E	21° 49' 59.498" N
P-113	83° 49' 34.668" E	21° 49' 57.138" N
P-114	83° 49' 32.225" E	21° 49' 54.778" N
P-115	83° 49' 29.782" E	21° 49' 52.417" N
P-116	83° 49' 27.340" E	21° 49' 50.057" N
P-117	83° 49' 24.897" E	21° 49' 47.696" N
P-118	83° 49' 22.454" E	21° 49' 45.336" N
P-119	83° 49' 20.012" E	21° 49' 42.975" N
P-120	83° 49' 17.569" E	21° 49' 40.615" N
P-121	83° 49' 15.127" E	21° 49' 38.254" N
P-122	83° 49' 12.684" E	21° 49' 35.894" N
P-123	83° 49' 10.242" E	21° 49' 33.533" N
P-124	83° 49' 7.799" E	21° 49' 31.173" N
P-125	83° 49' 5.357" E	21° 49' 28.812" N
P-126	83° 49' 2.914" E	21° 49' 26.452" N
P-127	83° 49' 0.472" E	21° 49' 24.091" N
P-128	83° 48' 58.029" E	21° 49' 21.730" N
P-129	83° 48' 55.587" E	21° 49' 19.370" N
P-130	83° 48' 53.145" E	21° 49' 17.009" N
P-131	83° 48' 50.702" E	21° 49' 14.649" N
P-132	83° 48' 48.260" E	21° 49' 12.288" N
P-133	83° 48' 45.818" E	21° 49' 9.927" N
P-134	83° 48' 43.376" E	21° 49' 7.567" N
P-135	83° 48' 40.933" E	21° 49' 5.206" N
P-136	83° 48' 38.491" E	21° 49' 2.846" N
P-137	83° 48' 36.049" E	21° 49' 0.485" N
P-138	83° 48' 33.607" E	21° 48' 58.124" N
P-139	83° 48' 31.165" E	21° 48' 55.763" N
P-140	83° 48' 28.723" E	21° 48' 53.403" N
P-141	83° 48' 26.281" E	21° 48' 51.042" N

**Provisional Cardinal Points for BARTAP Block**

POINT NO	Longitude (WGS84)	Latitude (WGS84)
P-142	83° 48' 23.839" E	21° 48' 48.681" N
P-143	83° 48' 21.396" E	21° 48' 46.321" N
P-144	83° 48' 18.954" E	21° 48' 43.960" N