

**Barra Block Summary**  
**PART A**

Sr. No.	Features	Details
<b>1.</b>	<b>Location</b>	
	Coal Block	<b>Barra</b>
	Latitude	22° 6' 38" N-22° 10' 43" N (Provisional)
	Longitude	82° 59' 17" E-83° 5' 17" E (Provisional)
	Topo Sheet No.	64 J/16 & 64 N/4
	Coalfield	Mand-Raigarh
	Villages	Barra, Jobi villages
	Tehsil/Taluka	Kharsia
	District	Raigarh
	State	Chhattisgarh
<b>2.</b>	<b>Connectivity with Block</b>	
	Nearest Rail Head	Kharsia is the nearest railhead on the Howrah-Mumbai line of South-East Central Railway.
	Road	Barra block is located about 16 km north of Kharsia town, the tehsil town and can be approached through Kharsia-Dharamjaigarh State Highway No. 22.
	Airport	
<b>3.</b>	<b>Area</b>	
	Geological Block Area	31.50 sq km (As per shape file, refer note below)
	Forest Area	11.25 sq.km (As per FSI Map)
	Non-Forest Area	20.20 sq,km
<b>4.</b>	<b>Climate and Topography</b>	
	Average Annual Rainfall	1500mm
	Temperature (Min. — Max.)	7°C during December to 48°C in the month of May
	Local Surface Drainage Channels	Dom Nala flows in the south eastern part of the block
	Rivers	The Mand river flowing from north-west to south-east direction on the eastern boundary of the block.
<b>5.</b>	<b>Exploration</b>	
	Status	Under regional exploration through promotional scheme
	Exploration Agency	MECL

	Total Number of Boreholes with meterage	24 boreholes & 12677.10 m ( as on 31.08.2021)			
	Borehole Density	Approx. 0.76 boreholes per sq km ( as on 31.08.2021)			
	General Dip of Seams	The dip of the strata varies from 8° to 15° show north-easterly to easterly dip.			
	General Strike Direction	The general strike is NW-SE			
	Faults				
<b>6.</b>	<b>Coal Seams &amp; Reserve</b>				
	Coal Seams	Thickness Range (m)	Depth Range (m)	Resources (mt)	Grade
	XXVI	6.8	538.8		
	XXV	1.52-2.59	546.07-550.35		
	XXIV	3.02-3.41	563.62-579.21		
	XXIIIB	0.76-14.19	50-616.6		
	XXIIIM	0.55-3.87	42.27-311.2		
	XXIIIT	0.81-10.5	34-614.07		
	XXII	0.51-11.5	20.19-350.6		
	XXIIB	0.79-4.82	70.37-109.77		
	XXIIM	1.19-1.3	68.6-98.8		
	XXIIT	2.01-6.12	66.26-93.8		
	XXI	1.82-11.07	44.2-379.82		
	XXIB	0.28-1.47	85.9-87.77		
	XXIM	2.6-2.6	82.22-82.22		
	XXIT	0.32-1.09	77.09-85.11		
	XX	0.2-5.97	74-394.15		
	XIXB	0.42-4.84	128.62-174.39		
	XIXM	0.73-0.98	126.08-167.3		
	XIXT	0.5-1.9	123.9-162.4		
	XVIII+XVII	13.67-14.84	152.65-432.85		
	XVIII	0.25-9	132.2-151.18		
	XVII	0.94-16.74	141.18-639.2		
	XVI	0.89-7.44	153.36-463.6		
	XV	0.27-5.58	162.57-676.2		
	XVB	0.48-0.48	171.35-171.35		
	XVT	0.5-0.5	169.5-169.5		
	XIV	0.24-8.86	184.2-715.85		
	XIVB	1.61-1.61	238.42-238.42		
	XIVT	5.63-5.63	232.68-232.68		

	XIIIB	1.02-1.02	200.02-200.02		
	XIIM	0.77-0.77	265.4-265.4		
	XIIIT	0.35-0.35	198.4-198.4		
	XII	0.31-6.08	201.36-590.6		
	XIIB	0.55-0.55	266.9-266.9		
	XIIT	0.75-0.75	262.88-262.88		
	XI	0.54-6.09	211-572.71		
	X	1.9-12.67	254.66-804.15		
	XB	0.7-0.7	292-292		
	XM	0.3-2.06	230.15-290.8		
	XT	1.34-1.97	228.43-285.74		
	IX+VIII	7.3-7.3	626.3-626.3		
	IX	6.53-13.78	294.14-812.94		
	VIII	1.67-13.6	326.29-900.1		
	VI+VII	23.42-23.42	499-499		
	VII	1.29-19.33	355.15-934.85		
	VI	0.64-13.2	362.59-949		
	V	0.64-17.27	402.76-965.6		
	IV	4.96-7.03	500.03-655.76		
	III	10.33-18.17	591.77-734.33		
	IIIA	1.81-1.81	722.45-722.45		
	II	0.21-2.66	708.38-827.15		
	IIA	0.13-0.3	686.11-812.59		
	I	0.05-0.12	724.5-847.71		
	<b>Total</b>			<b>900</b>	
	<b>Note:</b> The block is under regional exploration and the statistics of thickness and depth are highly tentative based on 16 no. of boreholes drilled by MECL as on 01.01.2021. These may vary after final correlation of seams and report preparation.				
<b>7.</b>	<b>Surface Constraints</b>	Barra, Jobi villages, Dense mixed jungle, a small patch of Karam Dongri Reserved Forest;			
<b>8.</b>	<b>Grade of coal</b>	G11 (Provisional) based on weighted average grade of adjacent Chhal CIL block.			
<b>9.</b>	<b>Decision Support System (DSS) Analysis</b>	Hydrology info: The polygon is within 250 meters of major river(s) - Mand River Wildlife info: The polygon touches Wildlife Habitat(s), Sloth Bear			
<b>10.</b>	<b>Eco Sensitive Zone (ESZ)</b>	NW boundary of the block is approx. 13 km from the boundary of buffer zone of un-notified Lemru Elephant Reserve.			

**Note:**

1. The summary has been compiled from The exploration scheme for regional exploration of coal in Barra block, Mand-Raigarh coalfield, MECL, September 2018.
2. Occurrence of 35 coal-shale horizons, including 15 major seams with Local seams occur in Barakar Formation, having thickness ranging from 0.48 m to 28.00 m, (considering the thickness of all split sections of the seam) are recorded during the

regional exploration done in neighbouring West of Chhal block by MECL. The quality of Coal Seams in the neighbouring Chhal block ranges from G12 to G6 grade dominantly.

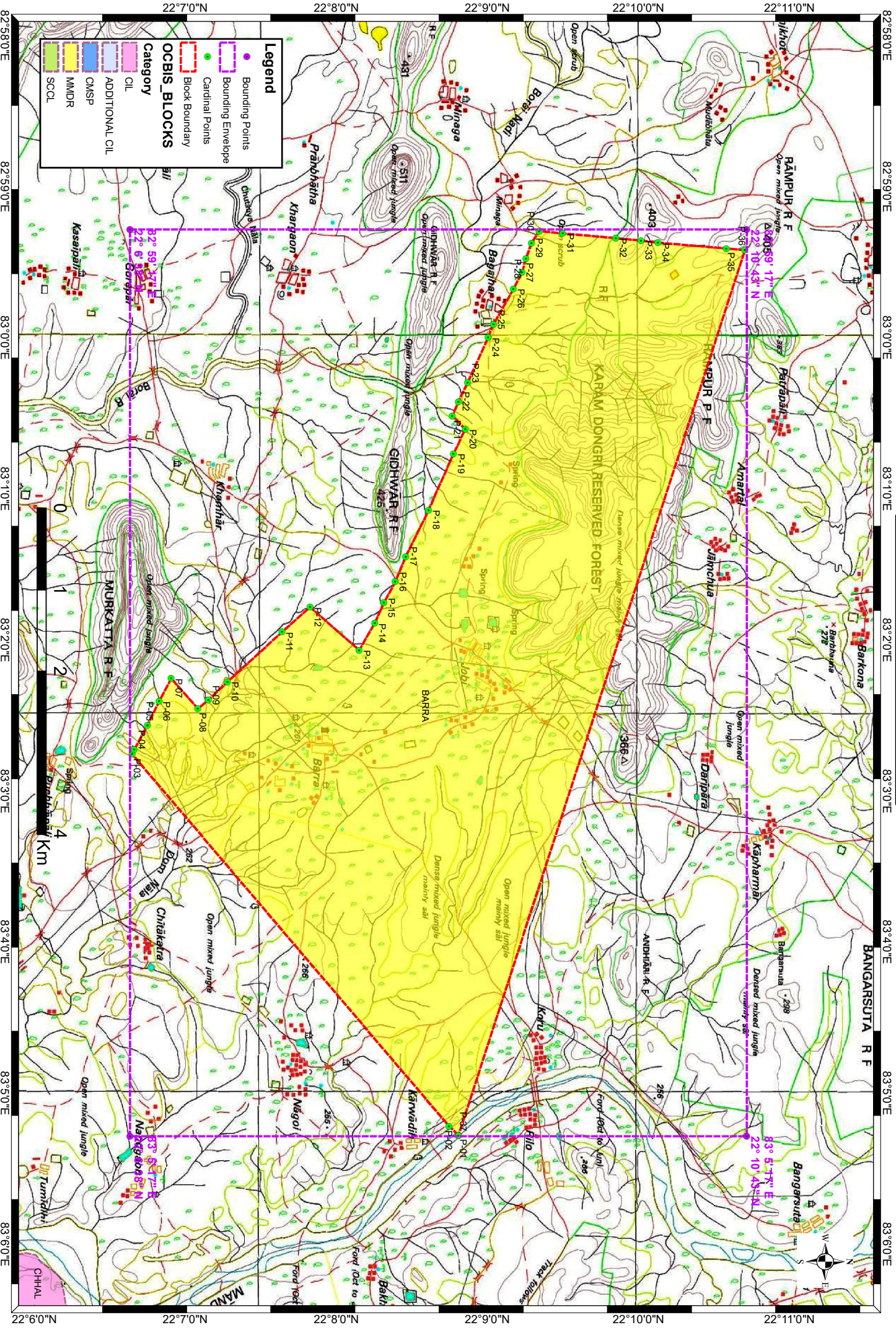
3. The block boundary is provisional and the cardinal points, bounding co-ordinates are approximate. Field DGPS survey is required to ascertain the exact area.

**Disclaimer:**

1. The analysis is done on Beta-version (Trial Version) of Decision Support System (DSS) of FSI / MOEF.
2. The Decision Rules for various parameters of this DSS System are controlled by FSI.
3. CMPDI only runs this DSS to obtain the status of any block based on these Decision Rules.
4. The database of the Decision Rules is updated by FSI from time to time.
5. CMPDI does not own any responsibility for variation in the results which are based on the Decision Rules of the FSI DSS in case of any updation of the database at FSI end.
6. ESZ analysis and tiger habitat/ corridor given here is based on the information available in public domain. Bidders are encouraged to verify this information and any other information additionally available.

# Barra Block, Mand Raigarh Coalfield

FOR INTERNAL/RESTRICTED USE ONLY



**Legend**

- Bounding Points
- Bounding Envelope
- Cardinal Points
- Block Boundary

**OCBIS\_BLOCKS Category**

- CIL
- ADDITIONAL CIL
- CMSP
- MMDR
- SCCL



22°7'0"N 22°8'0"N 22°9'0"N 22°10'0"N 22°11'0"N

82°58'0"E 82°59'0"E 83°0'0"E 83°1'0"E 83°2'0"E 83°3'0"E 83°4'0"E 83°5'0"E 83°6'0"E

RAMPUR R.F. KARAM DONGRI RESERVED FOREST MURKATTA R.F. BARRA BANGARSUTA R.F.

P-01 P-02 P-03 P-04 P-05 P-06 P-07 P-08 P-09 P-10 P-11 P-12 P-13 P-14 P-15 P-16 P-17 P-18 P-19 P-20 P-21 P-22 P-23 P-24 P-25 P-26 P-27 P-28 P-29 P-30 P-31 P-32 P-33 P-34 P-35 P-36

Barra Block, Mand Raigarh Coalfield

FOR INTERNAL/RESTRICTED USE ONLY

**Provisional Cardinal Points for BARRA Block**

POINT NO	Longitude (WGS84)	Latitude (WGS84)
P-1	83° 5' 16.694" E	22° 8' 48.537" N
P-2	83° 5' 12.999" E	22° 8' 44.749" N
P-3	83° 2' 45.369" E	22° 6' 38.868" N
P-4	83° 2' 43.516" E	22° 6' 39.717" N
P-5	83° 2' 33.874" E	22° 6' 44.995" N
P-6	83° 2' 24.421" E	22° 6' 49.584" N
P-7	83° 2' 15.243" E	22° 6' 54.434" N
P-8	83° 2' 27.247" E	22° 7' 4.981" N
P-9	83° 2' 23.855" E	22° 7' 9.195" N
P-10	83° 2' 16.523" E	22° 7' 16.758" N
P-11	83° 1' 56.899" E	22° 7' 38.360" N
P-12	83° 1' 46.911" E	22° 7' 49.567" N
P-13	83° 2' 4.084" E	22° 8' 9.077" N
P-14	83° 1' 53.362" E	22° 8' 15.242" N
P-15	83° 1' 45.281" E	22° 8' 18.875" N
P-16	83° 1' 36.823" E	22° 8' 23.471" N
P-17	83° 1' 26.927" E	22° 8' 27.575" N
P-18	83° 1' 8.423" E	22° 8' 36.651" N
P-19	83° 0' 46.069" E	22° 8' 46.495" N
P-20	83° 0' 36.316" E	22° 8' 51.219" N
P-21	83° 0' 31.070" E	22° 8' 46.022" N
P-22	83° 0' 25.361" E	22° 8' 48.430" N
P-23	83° 0' 17.795" E	22° 8' 52.203" N
P-24	82° 59' 59.925" E	22° 9' 0.249" N
P-25	82° 59' 54.809" E	22° 9' 2.420" N
P-26	82° 59' 40.560" E	22° 9' 10.315" N
P-27	82° 59' 34.030" E	22° 9' 13.785" N
P-28	82° 59' 28.697" E	22° 9' 15.334" N
P-29	82° 59' 22.361" E	22° 9' 17.600" N
P-30	82° 59' 17.646" E	22° 9' 20.531" N
P-31	82° 59' 18.608" E	22° 9' 29.964" N
P-32	82° 59' 20.485" E	22° 9' 50.941" N
P-33	82° 59' 21.409" E	22° 10' 0.999" N
P-34	82° 59' 22.283" E	22° 10' 7.717" N
P-35	82° 59' 24.542" E	22° 10' 34.831" N
P-36	82° 59' 25.248" E	22° 10' 42.252" N