

ASHOK KARKATTA CENTRAL COAL BLOCK SUMMARY

PART A

Sr. No	Features	Details
1.	Location	
	Coal Block	Ashok Karkatta Central
	Latitude (GR)	23° 42' 53" N to 23° 44' 11" N (Provisional)
	Longitude (GR)	84° 56' 34" E to 84° 58' 04" E (Provisional)
	Topo Sheet No.	F45B2of Survey of India (scale- 1:50,000)
	Coalfield	North Karanpura Coalfield
	Villages	Barwatoli
	Tehsil/Taluka	
	District	Latehar
	State	Jharkhand
2.	Connectivity with Block	
	Nearest Rail Head	The Khalari railway station on the Gomoh-Barkakana- Dehri-on-Son line (CIC Section) of East Central Railway is located at a distance of about 15 Km from the block and is connected by fair weather road. Highway No 7 and Bijupara is connected to Ranchi (30Km), the state capital by National Highway No 75.
	Road	The Ashok Karkatta Central Coal Block, North Karanpura Coalfield is accessible by a fair weather unmetalled road of about 9 km which is connected to Khelari-Dakra-Tandwa-Hazaribagh metalled road near Bachra opencast mine.
	Airport	The nearest airport, Birsa Munda Airport, is situated in Ranchi at a distance of about 65 km from Khalari.
3.	Area	
	Geological Block Area	4.87 sq.km. (As per shape file; Refer Note No. 3)
	Green Cover	Approx. 40 % (As per FSI plan)
	Area excluding green cover	Approx. 60 % (As per FSI plan)
4.	Climate and Topography	
	Average Annual Rainfall	152 cm
	Temperature (Min. — Max.)	24°C to 42°C
	Local Surface Drainage Channels	The main drainage pattern of the block is controlled by several tributaries of Damodar River, flowing from north to south.
	Rivers	Tributaries of Damodar River
5.	Exploration	

	Status	Explored			
	Exploration Agency	CMPDI			
	Total Number of Boreholes with meterage	43 Boreholes; 9356.00 m			
	Borehole Density	Approx. 10 Boreholes/sq.km.			
	General Dip of Seams	Dips varying between 6° and 12° North-Westerly towards the west of the block and northerly towards the East of the block.			
	General Strike Direction	The strike of the strata varies from NE-SW towards the East to ENE – WSW towards the west of the block			
	Faults	The Block is traversed by 22 strike parallel faults having throw ranging from 05 meter to 60 meter. Except fault F20 & F22, the remaining faults have been characterized by dipping towards SE to SSE.			
6.	Coal Seams & Reserve				
	Coal Seams	Thickness Range (m)	Depth Range (m)	Geological Reserve (MT) (Proved)	Grade
	K2	0.71-2.30			
	K1	0.70-3.00			
	KKTT	0.30-4.70	6.00-36.10	4.548	G11-G14
	KKTB	0.20-1.09	8.14-40.15	0.489	G9-G11
	UBSR	0.27-1.25	4.50-9.94	0.492	G8-G10
	LBSR	0.18-1.76	10.00-54.10	2.430	G11-G14
	UBKT	1.18-5.60	11.78-86.23	19.972	G10-G11
	UBKB	0.16-1.61	8.40-97.30	4.468	G10-G12
	LBKT	4.00-7.65	14.45-113.70	28.552	G11-G13
	LBKBT	0.25-3.50	8.00-127.40	6.890	G13-G15
	LBKBB	0.10-2.08	11.60-132.10	0.817	G12-G13
	UDR	0.15-2.81	25.30-143.50	6.753	G12-G15
	TLD	2.79-5.95	27.50-149.00	22.721	G10-G11
	B1	0.05-1.00	34.00-145.70	0.092	G10-G13
	B2	0.04-1.05	41.90-156.80	0.263	G14-G17
	MLDT	0.12-2.07	46.00-149.20	0.927	G14-G15
	MLDB	0.80-2.82	46.00-163.60	11.182	G12-G14
	BLD	0.80-3.06	66.40-181.30	11.404	G12-G14
	L1T	0.15-1.50	89.70-198.15	1.256	G14-G15
	L1B	0.30-2.00	83.00-198.80	3.000	G13-G15
	L2T	0.15-2.55	221.09-324.92	5.376	G14-G15
	L2B	0.18-1.25	11+.00-225.35	1.275	G12-G17
		Total		132.907	
7.	Surface Features	Rail siding of CCL near the eastern boundary. River crossing the block from the middle.			
8.	Grade of the block	G12 (Provisional) based on weighted average grade as per data available in GR.			
9.	Decision Support System (DSS) Analysis	Polygon touches Damodar & Haharo Rivers.			

10.	Eco Sensitive Zone (ESZ) Analysis	39.5 kms to the Hazaribagh ESZ from the North-eastern block boundary and 33.5 kms to the Lawalong WLS from the North-western block boundary.
------------	--	--

PART B

Sr. No.	Features	Details
1.	Previous Allocation	
	Name and Address of Allocatee	M/s Essar Power Ltd., Essar Power complex 463A above IDBI bank, Near Argora chowk, Asoke nagar, Dist-Ranchi, Jharkhand
2.	Target Capacity as per Mining Plan	Mining Plan not available
	Assessed tentative PRC	4 Mty
3.	Status of Clearances/Approvals	
	Mining Plan/ Mine Closure Plan	NA
	Forest Clearance	NA
	Environmental Clearance	NA
	Mining Lease	NA
	Land Acquisition	NA
	No. of PAPs as per Mining Plan	NA
4.	Surface Infrastructure already built, if any.	NA

Note:

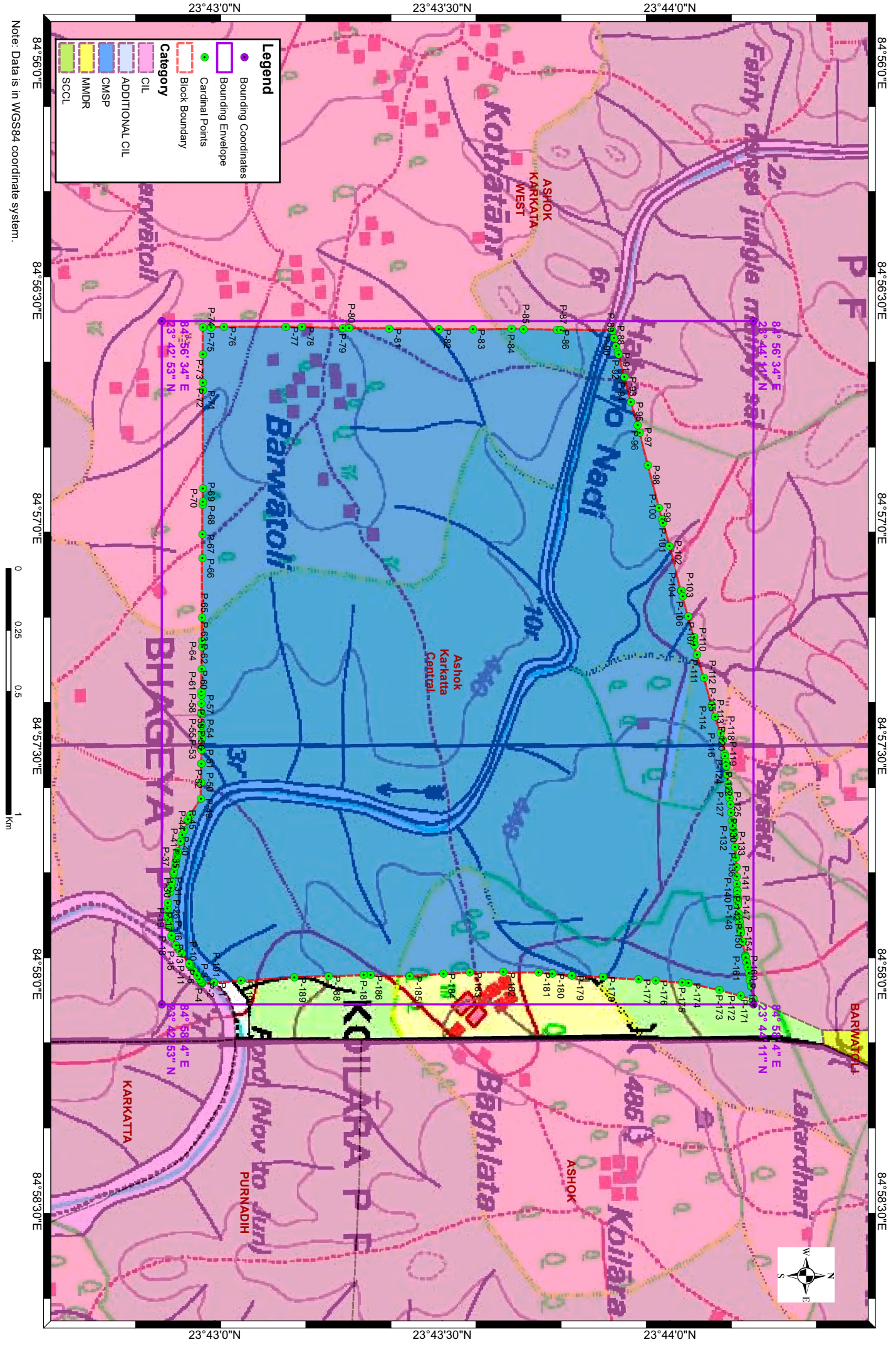
1. The above data is compiled from Geological Report, Mining Plan and the data furnished by the prior allottee in Annexure-I/II, as available. For clarifications with regard to above data, please refer aforesaid source documents.
2. The boundary of the block has been taken from GR after conversion to WGS84 system by feature matching. The block boundary is provisional and the cardinal points, bounding co-ordinates are approximate.
3. There may be a difference in area in the shape file and GR. Area in the shape file is based on feature mapped plan of the block as given in the GR. So, the area is tentative and field DGPS survey is required to ascertain the exact area.

Disclaimer:

1. The analysis is done on Beta-version (Trial Version) of Decision Support System (DSS) of FSI / MOEF.
2. The Decision Rules for various parameters of this DSS System are controlled by FSI.
3. CMPDI only runs this DSS to obtain the status of any block based on these Decision Rules.
4. The database of the Decision Rules is updated by FSI from time to time.
5. CMPDI does not own any responsibility for variation in the results which are based on the Decision Rules of the FSI DSS in case of any updation of the database at FSI end.
6. ESZ analysis and tiger habitat/ corridor given here is based on the information available in public domain. Bidders are encouraged to verify this information and any other information additionally available.

Ashok Karkatta Central Block, North Karanpura Coalfield

FOR INTERNAL/RESTRICTED USE ONLY



Note: Data is in WGS84 coordinate system.

Provisional Cardinal Points for Ashok Karkatta Central Block

POINT NO	Longitude (WGS84)	Latitude (WGS84)
P-1	84° 58' 1.110" E	23° 42' 59.887" N
P-2	84° 58' 1.197" E	23° 42' 58.345" N
P-3	84° 58' 1.199" E	23° 42' 58.315" N
P-4	84° 58' 1.155" E	23° 42' 58.285" N
P-5	84° 58' 1.022" E	23° 42' 58.195" N
P-6	84° 58' 0.807" E	23° 42' 58.050" N
P-7	84° 58' 0.674" E	23° 42' 57.959" N
P-8	84° 58' 0.200" E	23° 42' 57.638" N
P-9	84° 57' 59.623" E	23° 42' 57.247" N
P-10	84° 57' 58.996" E	23° 42' 56.823" N
P-11	84° 57' 58.886" E	23° 42' 56.752" N
P-12	84° 57' 58.786" E	23° 42' 56.686" N
P-13	84° 57' 58.661" E	23° 42' 56.597" N
P-14	84° 57' 57.355" E	23° 42' 55.659" N
P-15	84° 57' 56.996" E	23° 42' 55.401" N
P-16	84° 57' 56.270" E	23° 42' 54.880" N
P-17	84° 57' 55.173" E	23° 42' 54.342" N
P-18	84° 57' 54.982" E	23° 42' 54.307" N
P-19	84° 57' 53.890" E	23° 42' 54.105" N
P-20	84° 57' 53.817" E	23° 42' 54.091" N
P-21	84° 57' 53.770" E	23° 42' 54.081" N
P-22	84° 57' 53.732" E	23° 42' 54.074" N
P-23	84° 57' 53.520" E	23° 42' 54.028" N
P-24	84° 57' 53.272" E	23° 42' 53.974" N
P-25	84° 57' 53.069" E	23° 42' 53.930" N
P-26	84° 57' 52.794" E	23° 42' 53.874" N
P-27	84° 57' 52.507" E	23° 42' 53.820" N
P-28	84° 57' 52.262" E	23° 42' 53.770" N
P-29	84° 57' 51.393" E	23° 42' 53.767" N
P-30	84° 57' 50.655" E	23° 42' 53.800" N
P-31	84° 57' 49.202" E	23° 42' 54.108" N
P-32	84° 57' 48.672" E	23° 42' 54.214" N
P-33	84° 57' 48.672" E	23° 42' 54.214" N
P-34	84° 57' 47.918" E	23° 42' 54.366" N
P-35	84° 57' 46.832" E	23° 42' 54.584" N
P-36	84° 57' 46.570" E	23° 42' 54.630" N
P-37	84° 57' 45.845" E	23° 42' 54.758" N
P-38	84° 57' 45.264" E	23° 42' 54.861" N
P-39	84° 57' 44.791" E	23° 42' 54.944" N
P-40	84° 57' 44.452" E	23° 42' 55.004" N
P-41	84° 57' 44.091" E	23° 42' 55.067" N
P-42	84° 57' 43.882" E	23° 42' 55.104" N
P-43	84° 57' 42.559" E	23° 42' 55.489" N
P-44	84° 57' 41.743" E	23° 42' 55.727" N
P-45	84° 57' 41.020" E	23° 42' 55.968" N
P-46	84° 57' 39.802" E	23° 42' 56.407" N
P-47	84° 57' 39.657" E	23° 42' 56.459" N

Provisional Cardinal Points for Ashok Karkatta Central Block

P-48	84° 57' 39.070" E	23° 42' 56.805" N
P-49	84° 57' 36.909" E	23° 42' 58.189" N
P-50	84° 57' 34.743" E	23° 42' 58.229" N
P-51	84° 57' 32.322" E	23° 42' 58.251" N
P-52	84° 57' 32.320" E	23° 42' 58.252" N
P-53	84° 57' 30.443" E	23° 42' 58.269" N
P-54	84° 57' 29.003" E	23° 42' 58.283" N
P-55	84° 57' 28.260" E	23° 42' 58.289" N
P-56	84° 57' 27.238" E	23° 42' 58.281" N
P-57	84° 57' 25.818" E	23° 42' 58.269" N
P-58	84° 57' 25.622" E	23° 42' 58.267" N
P-59	84° 57' 24.386" E	23° 42' 58.257" N
P-60	84° 57' 23.266" E	23° 42' 58.247" N
P-61	84° 57' 22.797" E	23° 42' 58.243" N
P-62	84° 57' 19.854" E	23° 42' 58.290" N
P-63	84° 57' 16.933" E	23° 42' 58.326" N
P-64	84° 57' 16.136" E	23° 42' 58.336" N
P-65	84° 57' 13.110" E	23° 42' 58.330" N
P-66	84° 57' 5.243" E	23° 42' 58.362" N
P-67	84° 57' 2.078" E	23° 42' 58.375" N
P-68	84° 56' 58.235" E	23° 42' 58.418" N
P-69	84° 56' 57.768" E	23° 42' 58.423" N
P-70	84° 56' 56.033" E	23° 42' 58.421" N
P-71	84° 56' 43.128" E	23° 42' 58.436" N
P-72	84° 56' 42.098" E	23° 42' 58.445" N
P-73	84° 56' 38.386" E	23° 42' 58.428" N
P-74	84° 56' 34.789" E	23° 42' 58.445" N
P-75	84° 56' 34.777" E	23° 42' 59.513" N
P-76	84° 56' 34.758" E	23° 43' 1.208" N
P-77	84° 56' 34.741" E	23° 43' 9.370" N
P-78	84° 56' 34.736" E	23° 43' 11.485" N
P-79	84° 56' 34.932" E	23° 43' 16.884" N
P-80	84° 56' 34.938" E	23° 43' 17.681" N
P-81	84° 56' 34.976" E	23° 43' 22.990" N
P-82	84° 56' 35.060" E	23° 43' 29.548" N
P-83	84° 56' 35.083" E	23° 43' 34.021" N
P-84	84° 56' 35.027" E	23° 43' 39.115" N
P-85	84° 56' 35.058" E	23° 43' 40.668" N
P-86	84° 56' 35.147" E	23° 43' 45.117" N
P-87	84° 56' 35.134" E	23° 43' 45.624" N
P-88	84° 56' 35.239" E	23° 43' 52.393" N
P-89	84° 56' 36.197" E	23° 43' 52.621" N
P-90	84° 56' 37.305" E	23° 43' 52.894" N
P-91	84° 56' 38.068" E	23° 43' 53.126" N
P-92	84° 56' 38.402" E	23° 43' 53.227" N
P-93	84° 56' 41.331" E	23° 43' 53.998" N
P-94	84° 56' 41.334" E	23° 43' 53.999" N
P-95	84° 56' 44.600" E	23° 43' 54.859" N

Provisional Cardinal Points for Ashok Karkatta Central Block

P-96	84° 56' 47.708" E	23° 43' 55.746" N
P-97	84° 56' 48.678" E	23° 43' 55.995" N
P-98	84° 56' 52.945" E	23° 43' 57.090" N
P-99	84° 56' 58.604" E	23° 43' 58.543" N
P-100	84° 57' 0.097" E	23° 43' 58.926" N
P-101	84° 57' 0.571" E	23° 43' 59.061" N
P-102	84° 57' 3.689" E	23° 43' 59.947" N
P-103	84° 57' 9.530" E	23° 44' 1.493" N
P-104	84° 57' 9.530" E	23° 44' 1.493" N
P-105	84° 57' 9.531" E	23° 44' 1.493" N
P-106	84° 57' 10.212" E	23° 44' 1.669" N
P-107	84° 57' 12.891" E	23° 44' 2.409" N
P-108	84° 57' 15.653" E	23° 44' 3.177" N
P-109	84° 57' 16.278" E	23° 44' 3.195" N
P-110	84° 57' 16.746" E	23° 44' 3.209" N
P-111	84° 57' 17.928" E	23° 44' 3.564" N
P-112	84° 57' 21.023" E	23° 44' 4.495" N
P-113	84° 57' 24.651" E	23° 44' 5.546" N
P-114	84° 57' 24.652" E	23° 44' 5.546" N
P-115	84° 57' 26.142" E	23° 44' 5.965" N
P-116	84° 57' 28.248" E	23° 44' 6.643" N
P-117	84° 57' 29.167" E	23° 44' 6.939" N
P-118	84° 57' 29.257" E	23° 44' 6.949" N
P-119	84° 57' 31.000" E	23° 44' 7.197" N
P-120	84° 57' 31.344" E	23° 44' 7.246" N
P-121	84° 57' 32.020" E	23° 44' 7.342" N
P-122	84° 57' 32.663" E	23° 44' 7.413" N
P-123	84° 57' 33.711" E	23° 44' 7.529" N
P-124	84° 57' 34.953" E	23° 44' 7.666" N
P-125	84° 57' 35.966" E	23° 44' 7.773" N
P-126	84° 57' 35.966" E	23° 44' 7.773" N
P-127	84° 57' 35.967" E	23° 44' 7.773" N
P-128	84° 57' 36.872" E	23° 44' 7.867" N
P-129	84° 57' 37.690" E	23° 44' 7.951" N
P-130	84° 57' 38.740" E	23° 44' 8.060" N
P-131	84° 57' 39.781" E	23° 44' 8.168" N
P-132	84° 57' 40.475" E	23° 44' 8.257" N
P-133	84° 57' 41.158" E	23° 44' 8.344" N
P-134	84° 57' 41.726" E	23° 44' 8.416" N
P-135	84° 57' 41.976" E	23° 44' 8.442" N
P-136	84° 57' 43.316" E	23° 44' 8.582" N
P-137	84° 57' 44.729" E	23° 44' 8.671" N
P-138	84° 57' 45.936" E	23° 44' 8.747" N
P-139	84° 57' 47.193" E	23° 44' 8.792" N
P-140	84° 57' 48.149" E	23° 44' 8.826" N
P-141	84° 57' 48.987" E	23° 44' 8.856" N
P-142	84° 57' 49.058" E	23° 44' 8.859" N
P-143	84° 57' 49.572" E	23° 44' 8.883" N

Provisional Cardinal Points for Ashok Karkatta Central Block

P-144	84° 57' 50.049" E	23° 44' 8.905" N
P-145	84° 57' 50.270" E	23° 44' 8.915" N
P-146	84° 57' 50.340" E	23° 44' 8.920" N
P-147	84° 57' 50.445" E	23° 44' 8.927" N
P-148	84° 57' 50.898" E	23° 44' 8.957" N
P-149	84° 57' 52.037" E	23° 44' 9.033" N
P-150	84° 57' 52.701" E	23° 44' 9.096" N
P-151	84° 57' 52.756" E	23° 44' 9.101" N
P-152	84° 57' 53.134" E	23° 44' 9.150" N
P-153	84° 57' 53.231" E	23° 44' 9.162" N
P-154	84° 57' 53.723" E	23° 44' 9.225" N
P-155	84° 57' 54.138" E	23° 44' 9.289" N
P-156	84° 57' 54.328" E	23° 44' 9.318" N
P-157	84° 57' 54.387" E	23° 44' 9.327" N
P-158	84° 57' 54.600" E	23° 44' 9.367" N
P-159	84° 57' 55.758" E	23° 44' 9.588" N
P-160	84° 57' 57.561" E	23° 44' 9.935" N
P-161	84° 57' 57.613" E	23° 44' 9.945" N
P-162	84° 57' 57.797" E	23° 44' 9.981" N
P-163	84° 57' 58.452" E	23° 44' 10.107" N
P-164	84° 57' 58.452" E	23° 44' 10.107" N
P-165	84° 57' 59.116" E	23° 44' 10.234" N
P-166	84° 57' 59.920" E	23° 44' 10.387" N
P-167	84° 58' 0.537" E	23° 44' 10.505" N
P-168	84° 58' 0.831" E	23° 44' 10.561" N
P-169	84° 58' 1.597" E	23° 44' 10.690" N
P-170	84° 58' 1.598" E	23° 44' 10.690" N
P-171	84° 58' 3.322" E	23° 44' 10.978" N
P-172	84° 58' 2.862" E	23° 44' 9.321" N
P-173	84° 58' 2.083" E	23° 44' 6.524" N
P-174	84° 58' 1.176" E	23° 44' 2.419" N
P-175	84° 58' 1.095" E	23° 44' 1.609" N
P-176	84° 58' 0.851" E	23° 43' 58.080" N
P-177	84° 58' 0.698" E	23° 43' 55.859" N
P-178	84° 58' 0.397" E	23° 43' 51.177" N
P-179	84° 58' 0.218" E	23° 43' 47.064" N
P-180	84° 57' 59.959" E	23° 43' 44.498" N
P-181	84° 57' 59.801" E	23° 43' 42.655" N
P-182	84° 57' 59.760" E	23° 43' 38.028" N
P-183	84° 57' 59.792" E	23° 43' 33.608" N
P-184	84° 57' 59.976" E	23° 43' 30.136" N
P-185	84° 58' 0.288" E	23° 43' 25.703" N
P-186	84° 58' 0.163" E	23° 43' 20.541" N
P-187	84° 58' 0.180" E	23° 43' 19.645" N
P-188	84° 58' 0.267" E	23° 43' 15.004" N
P-189	84° 58' 0.412" E	23° 43' 10.465" N
P-190	84° 58' 0.914" E	23° 43' 3.437" N
P-191	84° 58' 1.111" E	23° 42' 59.889" N

Provisional Cardinal Points for Ashok Karkatta Central Block

Note: The provisional cardinal points are in WGS84 coordinate system. These points are extracted through ArcGIS software after georeferencing of block boundary and onground DGPS survey is required to ascertain the exact location of the points.