

MARWATOLA SECTOR VI & VII COMBINED COAL BLOCK

PART A

Sl. No.	Features	Details
1.	Location	
	Coal Block	MARWATOLA SECTOR VI & VII COMBINED BLOCK
	Latitude (WGS84 System)	23° 15' 59'' N & 23° 18' 04'' N (Approximate)
	Longitude (WGS84 System)	81° 12' 25'' E & 81° 17' 19'' E (Approximate)
	Topo Sheet No.	64 E/3 and 64E/7
	Coalfield	Sohagpur
	Villages	Raugarh, Mantola, (As per Survey of India Toposheet)
	District	Shahdol
	State	Madhya Pradesh
2.	Connectivity with Block	
	Nearest Rail Head	The nearest rail head is Shahdol located 12 km north-east of the block on Anuppur-Chirimiri broad gauge line of South East Central Railway.
	Road	The Shahdol-Pali road (NH-78) passes through Marwatola block. Besides, there are some forest roads extending to the jungle clad ridges from where timber is transported
3.	Area	
	Geological Block Area	22.17 sq.km.(as per plan in WGS84 UTM system)
	Forest Area	46% (Approximately)
	Non-Forest Area	54 % (Approximately)
4.	Topography	
	Local Surface Drainage Channels	In the block there are three nallas flowing (i) Arar Nalla (from South to Southeast), (ii) Patpariha Nalla (from Southwest to South) and (iii) Bagaiha Nalla (from Southwest to South) in which Patpariha Nalla and Bagaiha Nalla both ultimately join Arar Nalla in Southeast direction.
	Rivers	Koilarha Nala ,Bagaiha and Arar Nala .
5.	Exploration	
	Status	Explored
	Boreholes and meterage drilled	Total 107 boreholes and meterage drilled 27032m
	Borehole Density	Overall 4.83 BHs/sq.km and 8.37 BHs/sq.km in proved area
	General Dip of Seams	1° to 4° NorthEasterly
	General Strike Direction	NE-SW

6.	Coal Seams & Reserve				
	Number of Coal Seams	Thickness Range (m)	Floor Depth Range (m)	Geological Reserve (Mt)	Grade
	VIII	0.05-1.90	25.43-79.00	3.20	G9-G4
	L2	0.08-3.38	29.61-121.20	7.66	G12-G7
	VII TOP	0.17-6.09	53.97-141.85	44.61	G12-G5
	VII BOT	0.85-3.80	64.55-152.00	38.83	G12-G6
	VII COMB	4.61-10.58	89.31-173.80	34.25	G12-G9
	VI	0.06-2.99	90.47-197.25	9.73	G5-G11
	VT	0.20-3.85	106.30-212.55	16.25	G12-G6
	VB	0.06-2.24	121.40-235.00	10.85	G10-G5
	L1	0.10-3.75	132.58-246.43	11.93	G12-G3
	L0	0.09-1.65	144.90-236.76	12.46	G11-G7
	Indicated			155.42	
Total			345.19		
7.	Surface Constraints	1. The Railway line Anuppur to Katni is passing partly along the northern boundary of the block 2. Bagaiha nala is passing through the southern part of the block 3. Arar nala is passing through the eastern part of the block. 4. sohagpur river forest			

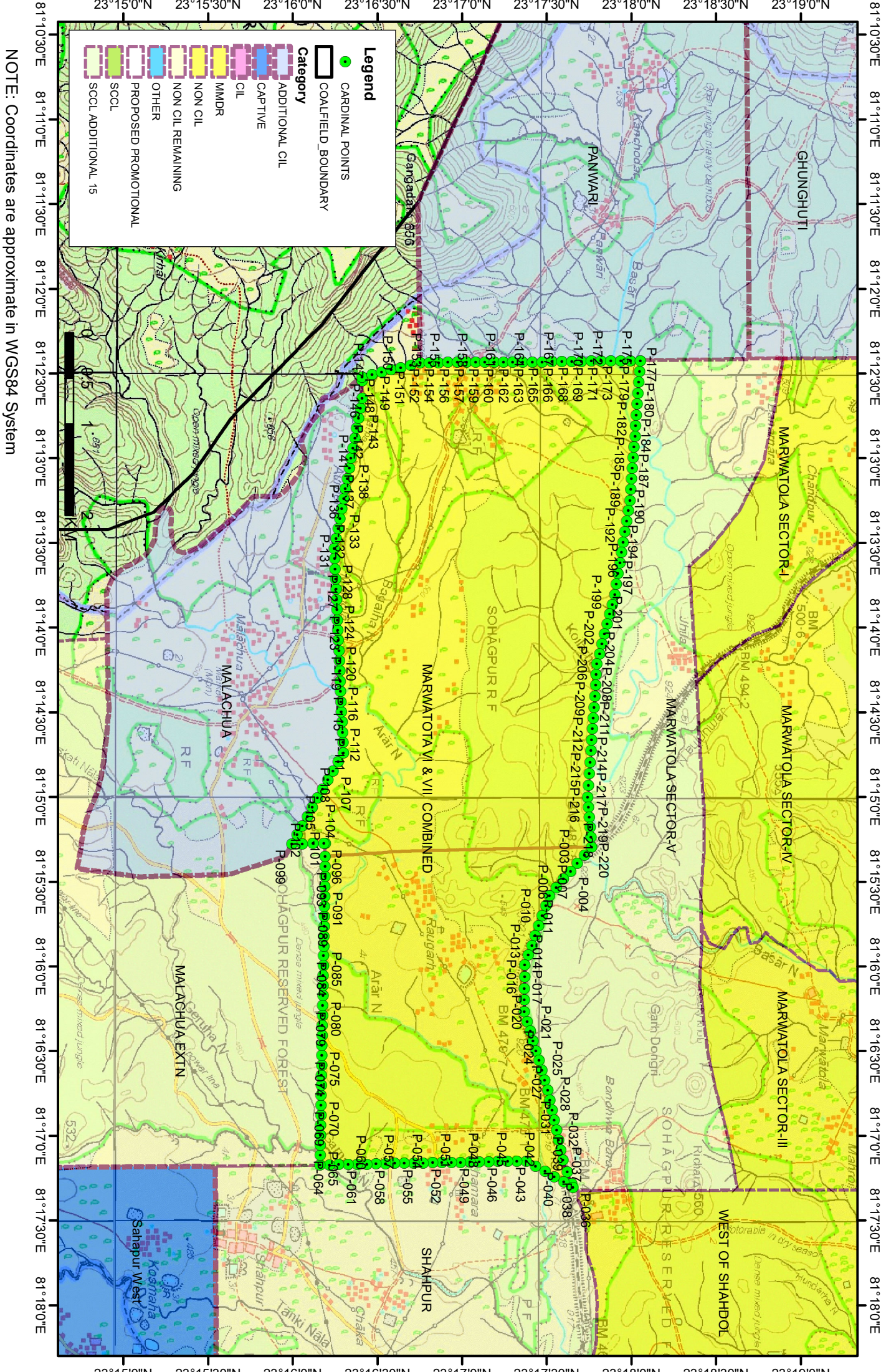
PART B

Sr. No.	Features	Details
1.	Mining Plan	Not prepared
2.	Tentative Peak Rated Mine Capacity	4.0 MTY

Note:

- The above data in Part-A is compiled from Geological Report.
- The boundary of the block has been taken from GR after conversion to WGS84 system by feature matching. The block boundary is provisional and the cardinal points, bounding co-ordinates are approximate.
- There is a difference in area in the shape file and GR. Area in the shape file is based on feature mapped plan of the block as given in the GR. So, the area is tentative and field DGPS survey is required to ascertain the exact area.

MARWATOLA VI & VII COMBINED



23°15'0"N 23°15'30"N 23°16'0"N 23°16'30"N 23°17'0"N 23°17'30"N 23°18'0"N 23°18'30"N 23°19'0"N

23°15'0"N 23°15'30"N 23°16'0"N 23°16'30"N 23°17'0"N 23°17'30"N 23°18'0"N 23°18'30"N 23°19'0"N

81°10'30"E 81°11'0"E 81°11'30"E 81°12'0"E 81°12'30"E 81°13'0"E 81°13'30"E 81°14'0"E 81°14'30"E 81°15'0"E 81°15'30"E 81°16'0"E 81°16'30"E 81°17'0"E 81°17'30"E 81°18'0"E

81°10'30"E 81°11'0"E 81°11'30"E 81°12'0"E 81°12'30"E 81°13'0"E 81°13'30"E 81°14'0"E 81°14'30"E 81°15'0"E 81°15'30"E 81°16'0"E 81°16'30"E 81°17'0"E 81°17'30"E 81°18'0"E

NOTE: Coordinates are approximate in WGS84 System

Legend

- CARDINAL POINTS
- COALFIELD_BOUNDARY

Category

- ADDITIONAL CIL
- CAPTIVE
- CIL
- MMDR
- NON CIL
- NON CIL REMAINING
- OTHER
- PROPOSED PROMOTIONAL
- SCCL
- SCCL ADDITIONAL 15

**Co-ordinates (in WGS 84 System) of cardinal points of
Marwatola Sector VI and VII Combined Coal Block**

Sl. No.	Point ID	Longitude	Latitude
1	P-01	81° 15' 17.640" E	23° 17' 45.817" N
2	P-02	81° 15' 20.506" E	23° 17' 43.316" N
3	P-03	81° 15' 23.371" E	23° 17' 40.816" N
4	P-04	81° 15' 26.237" E	23° 17' 38.316" N
5	P-05	81° 15' 29.103" E	23° 17' 35.816" N
6	P-06	81° 15' 31.969" E	23° 17' 33.316" N
7	P-07	81° 15' 34.834" E	23° 17' 30.815" N
8	P-08	81° 15' 38.371" E	23° 17' 29.575" N
9	P-09	81° 15' 41.907" E	23° 17' 28.335" N
10	P-10	81° 15' 45.444" E	23° 17' 27.094" N
11	P-11	81° 15' 48.980" E	23° 17' 25.854" N
12	P-12	81° 15' 52.516" E	23° 17' 24.614" N
13	P-13	81° 15' 56.052" E	23° 17' 23.373" N
14	P-14	81° 15' 59.589" E	23° 17' 22.133" N
15	P-15	81° 16' 3.678" E	23° 17' 22.087" N
16	P-16	81° 16' 7.768" E	23° 17' 22.041" N
17	P-17	81° 16' 11.858" E	23° 17' 21.996" N
18	P-18	81° 16' 15.947" E	23° 17' 21.950" N
19	P-19	81° 16' 19.429" E	23° 17' 22.991" N
20	P-20	81° 16' 22.911" E	23° 17' 24.032" N
21	P-21	81° 16' 26.393" E	23° 17' 25.074" N
22	P-22	81° 16' 29.875" E	23° 17' 26.115" N
23	P-23	81° 16' 33.357" E	23° 17' 27.156" N
24	P-24	81° 16' 36.839" E	23° 17' 28.197" N
25	P-25	81° 16' 40.321" E	23° 17' 29.239" N
26	P-26	81° 16' 43.803" E	23° 17' 30.280" N
27	P-27	81° 16' 47.349" E	23° 17' 31.051" N
28	P-28	81° 16' 50.895" E	23° 17' 31.821" N
29	P-29	81° 16' 54.441" E	23° 17' 32.592" N
30	P-30	81° 16' 57.986" E	23° 17' 33.363" N
31	P-31	81° 17' 1.532" E	23° 17' 34.133" N
32	P-32	81° 17' 5.078" E	23° 17' 34.904" N
33	P-33	81° 17' 8.624" E	23° 17' 35.675" N
34	P-34	81° 17' 12.764" E	23° 17' 37.223" N
35	P-35	81° 17' 16.904" E	23° 17' 38.771" N
36	P-36	81° 17' 18.182" E	23° 17' 39.232" N
37	P-37	81° 17' 16.315" E	23° 17' 35.914" N
38	P-38	81° 17' 14.449" E	23° 17' 32.597" N
39	P-39	81° 17' 12.583" E	23° 17' 29.280" N

Sl. No.	Point ID	Longitude	Latitude
40	P-40	81° 17' 10.716" E	23° 17' 25.962" N
41	P-41	81° 17' 8.850" E	23° 17' 22.645" N
42	P-42	81° 17' 8.917" E	23° 17' 19.324" N
43	P-43	81° 17' 8.983" E	23° 17' 16.003" N
44	P-44	81° 17' 9.050" E	23° 17' 12.682" N
45	P-45	81° 17' 9.116" E	23° 17' 9.361" N
46	P-46	81° 17' 9.183" E	23° 17' 6.039" N
47	P-47	81° 17' 9.249" E	23° 17' 2.718" N
48	P-48	81° 17' 9.316" E	23° 16' 59.397" N
49	P-49	81° 17' 9.383" E	23° 16' 56.076" N
50	P-50	81° 17' 9.449" E	23° 16' 52.755" N
51	P-51	81° 17' 9.516" E	23° 16' 49.434" N
52	P-52	81° 17' 9.582" E	23° 16' 46.113" N
53	P-53	81° 17' 9.649" E	23° 16' 42.792" N
54	P-54	81° 17' 9.715" E	23° 16' 39.471" N
55	P-55	81° 17' 9.782" E	23° 16' 36.150" N
56	P-56	81° 17' 9.848" E	23° 16' 32.829" N
57	P-57	81° 17' 9.915" E	23° 16' 29.508" N
58	P-58	81° 17' 9.982" E	23° 16' 26.187" N
59	P-59	81° 17' 10.048" E	23° 16' 22.866" N
60	P-60	81° 17' 10.115" E	23° 16' 19.545" N
61	P-61	81° 17' 10.181" E	23° 16' 16.224" N
62	P-62	81° 17' 10.248" E	23° 16' 12.903" N
63	P-63	81° 17' 10.314" E	23° 16' 9.582" N
64	P-64	81° 17' 6.787" E	23° 16' 9.642" N
65	P-65	81° 17' 3.259" E	23° 16' 9.701" N
66	P-66	81° 16' 59.732" E	23° 16' 9.761" N
67	P-67	81° 16' 56.204" E	23° 16' 9.821" N
68	P-68	81° 16' 52.676" E	23° 16' 9.880" N
69	P-69	81° 16' 49.149" E	23° 16' 9.940" N
70	P-70	81° 16' 45.621" E	23° 16' 10.000" N
71	P-71	81° 16' 42.094" E	23° 16' 10.059" N
72	P-72	81° 16' 38.566" E	23° 16' 10.119" N
73	P-73	81° 16' 35.038" E	23° 16' 10.179" N
74	P-74	81° 16' 31.511" E	23° 16' 10.238" N
75	P-75	81° 16' 27.983" E	23° 16' 10.298" N
76	P-76	81° 16' 24.456" E	23° 16' 10.357" N
77	P-77	81° 16' 20.928" E	23° 16' 10.417" N
78	P-78	81° 16' 17.400" E	23° 16' 10.476" N

Sl. No.	Point ID	Longitude	Latitude
79	P-79	81° 16' 13.873" E	23° 16' 10.536" N
80	P-80	81° 16' 10.345" E	23° 16' 10.595" N
81	P-81	81° 16' 6.818" E	23° 16' 10.654" N
82	P-82	81° 16' 3.290" E	23° 16' 10.714" N
83	P-83	81° 15' 59.762" E	23° 16' 10.773" N
84	P-84	81° 15' 56.235" E	23° 16' 10.833" N
85	P-85	81° 15' 52.707" E	23° 16' 10.892" N
86	P-86	81° 15' 49.180" E	23° 16' 10.951" N
87	P-87	81° 15' 45.652" E	23° 16' 11.010" N
88	P-88	81° 15' 42.124" E	23° 16' 11.070" N
89	P-89	81° 15' 38.597" E	23° 16' 11.129" N
90	P-90	81° 15' 35.069" E	23° 16' 11.188" N
91	P-91	81° 15' 31.542" E	23° 16' 11.247" N
92	P-92	81° 15' 28.014" E	23° 16' 11.307" N
93	P-93	81° 15' 24.486" E	23° 16' 11.366" N
94	P-94	81° 15' 20.959" E	23° 16' 11.425" N
95	P-95	81° 15' 16.512" E	23° 16' 11.499" N
96	P-96	81° 15' 16.509" E	23° 16' 10.898" N
97	P-97	81° 15' 16.539" E	23° 16' 7.131" N
98	P-98	81° 15' 16.569" E	23° 16' 3.364" N
99	P-99	81° 15' 16.599" E	23° 15' 59.598" N
100	P-100	81° 15' 13.363" E	23° 16' 1.425" N
101	P-101	81° 15' 10.127" E	23° 16' 3.252" N
102	P-102	81° 15' 6.891" E	23° 16' 5.080" N
103	P-103	81° 15' 3.655" E	23° 16' 6.907" N
104	P-104	81° 15' 0.419" E	23° 16' 8.734" N
105	P-105	81° 14' 57.183" E	23° 16' 10.561" N
106	P-106	81° 14' 53.946" E	23° 16' 12.388" N
107	P-107	81° 14' 50.710" E	23° 16' 14.216" N
108	P-108	81° 14' 47.474" E	23° 16' 16.043" N
109	P-109	81° 14' 44.238" E	23° 16' 17.870" N
110	P-110	81° 14' 40.622" E	23° 16' 17.709" N
111	P-111	81° 14' 37.006" E	23° 16' 17.547" N
112	P-112	81° 14' 33.390" E	23° 16' 17.386" N
113	P-113	81° 14' 29.774" E	23° 16' 17.224" N
114	P-114	81° 14' 26.158" E	23° 16' 17.063" N
115	P-115	81° 14' 22.543" E	23° 16' 16.901" N
116	P-116	81° 14' 18.927" E	23° 16' 16.739" N
117	P-117	81° 14' 15.311" E	23° 16' 16.578" N
118	P-118	81° 14' 11.695" E	23° 16' 16.416" N
119	P-119	81° 14' 8.079" E	23° 16' 16.254" N
120	P-120	81° 14' 4.463" E	23° 16' 16.093" N

Sl. No.	Point ID	Longitude	Latitude
121	P-121	81° 14' 0.847" E	23° 16' 15.931" N
122	P-122	81° 13' 57.232" E	23° 16' 15.769" N
123	P-123	81° 13' 53.616" E	23° 16' 15.608" N
124	P-124	81° 13' 50.000" E	23° 16' 15.446" N
125	P-125	81° 13' 46.384" E	23° 16' 15.284" N
126	P-126	81° 13' 42.768" E	23° 16' 15.122" N
127	P-127	81° 13' 39.152" E	23° 16' 14.960" N
128	P-128	81° 13' 35.537" E	23° 16' 14.799" N
129	P-129	81° 13' 31.921" E	23° 16' 14.637" N
130	P-130	81° 13' 28.386" E	23° 16' 15.296" N
131	P-131	81° 13' 24.851" E	23° 16' 15.956" N
132	P-132	81° 13' 21.316" E	23° 16' 16.616" N
133	P-133	81° 13' 17.781" E	23° 16' 17.275" N
134	P-134	81° 13' 14.246" E	23° 16' 17.935" N
135	P-135	81° 13' 10.711" E	23° 16' 18.595" N
136	P-136	81° 13' 7.176" E	23° 16' 19.254" N
137	P-137	81° 13' 3.641" E	23° 16' 19.914" N
138	P-138	81° 13' 0.106" E	23° 16' 20.573" N
139	P-139	81° 12' 56.571" E	23° 16' 21.233" N
140	P-140	81° 12' 53.036" E	23° 16' 21.892" N
141	P-141	81° 12' 49.501" E	23° 16' 22.552" N
142	P-142	81° 12' 45.966" E	23° 16' 23.211" N
143	P-143	81° 12' 42.431" E	23° 16' 23.871" N
144	P-144	81° 12' 38.896" E	23° 16' 24.530" N
145	P-145	81° 12' 32.696" E	23° 16' 24.507" N
146	P-146	81° 12' 31.250" E	23° 16' 24.562" N
147	P-147	81° 12' 30.397" E	23° 16' 27.983" N
148	P-148	81° 12' 29.544" E	23° 16' 31.403" N
149	P-149	81° 12' 28.691" E	23° 16' 34.823" N
150	P-150	81° 12' 27.838" E	23° 16' 38.244" N
151	P-151	81° 12' 26.985" E	23° 16' 41.664" N
152	P-152	81° 12' 26.132" E	23° 16' 45.085" N
153	P-153	81° 12' 26.108" E	23° 16' 48.367" N
154	P-154	81° 12' 26.085" E	23° 16' 51.649" N
155	P-155	81° 12' 26.062" E	23° 16' 54.931" N
156	P-156	81° 12' 26.039" E	23° 16' 58.213" N
157	P-157	81° 12' 26.016" E	23° 17' 1.495" N
158	P-158	81° 12' 25.993" E	23° 17' 4.777" N
159	P-159	81° 12' 25.970" E	23° 17' 8.059" N
160	P-160	81° 12' 25.947" E	23° 17' 11.341" N
161	P-161	81° 12' 25.924" E	23° 17' 14.623" N
162	P-162	81° 12' 25.901" E	23° 17' 17.905" N

Sl. No.	Point ID	Longitude	Latitude
163	P-163	81° 12' 25.869" E	23° 17' 21.377" N
164	P-164	81° 12' 25.838" E	23° 17' 24.848" N
165	P-165	81° 12' 25.807" E	23° 17' 28.320" N
166	P-166	81° 12' 25.775" E	23° 17' 31.791" N
167	P-167	81° 12' 25.744" E	23° 17' 35.263" N
168	P-168	81° 12' 25.713" E	23° 17' 38.734" N
169	P-169	81° 12' 25.681" E	23° 17' 42.206" N
170	P-170	81° 12' 25.650" E	23° 17' 45.677" N
171	P-171	81° 12' 25.618" E	23° 17' 49.149" N
172	P-172	81° 12' 25.587" E	23° 17' 52.620" N
173	P-173	81° 12' 25.556" E	23° 17' 56.092" N
174	P-174	81° 12' 25.524" E	23° 17' 59.563" N
175	P-175	81° 12' 25.493" E	23° 18' 3.035" N
176	P-176	81° 12' 29.310" E	23° 18' 2.770" N
177	P-177	81° 12' 33.128" E	23° 18' 2.505" N
178	P-178	81° 12' 36.945" E	23° 18' 2.240" N
179	P-179	81° 12' 40.762" E	23° 18' 1.975" N
180	P-180	81° 12' 44.580" E	23° 18' 1.710" N
181	P-181	81° 12' 48.397" E	23° 18' 1.445" N
182	P-182	81° 12' 52.214" E	23° 18' 1.180" N
183	P-183	81° 12' 55.985" E	23° 18' 0.886" N
184	P-184	81° 12' 59.755" E	23° 18' 0.592" N
185	P-185	81° 13' 3.526" E	23° 18' 0.298" N
186	P-186	81° 13' 7.296" E	23° 18' 0.005" N
187	P-187	81° 13' 11.067" E	23° 17' 59.711" N
188	P-188	81° 13' 14.837" E	23° 17' 59.417" N
189	P-189	81° 13' 18.540" E	23° 17' 58.818" N
190	P-190	81° 13' 22.243" E	23° 17' 58.219" N
191	P-191	81° 13' 25.947" E	23° 17' 57.620" N
192	P-192	81° 13' 29.650" E	23° 17' 57.020" N
193	P-193	81° 13' 33.353" E	23° 17' 56.421" N
194	P-194	81° 13' 37.056" E	23° 17' 55.822" N
195	P-195	81° 13' 40.759" E	23° 17' 55.223" N
196	P-196	81° 13' 44.462" E	23° 17' 54.624" N
197	P-197	81° 13' 48.165" E	23° 17' 54.025" N
198	P-198	81° 13' 51.674" E	23° 17' 53.127" N
199	P-199	81° 13' 55.183" E	23° 17' 52.230" N
200	P-200	81° 13' 58.692" E	23° 17' 51.333" N
201	P-201	81° 14' 2.201" E	23° 17' 50.435" N
202	P-202	81° 14' 5.710" E	23° 17' 49.538" N
203	P-203	81° 14' 9.219" E	23° 17' 48.641" N
204	P-204	81° 14' 12.728" E	23° 17' 47.743" N

Sl. No.	Point ID	Longitude	Latitude
205	P-205	81° 14' 16.583" E	23° 17' 47.469" N
206	P-206	81° 14' 20.438" E	23° 17' 47.194" N
207	P-207	81° 14' 24.292" E	23° 17' 46.920" N
208	P-208	81° 14' 28.147" E	23° 17' 46.645" N
209	P-209	81° 14' 32.002" E	23° 17' 46.371" N
210	P-210	81° 14' 35.856" E	23° 17' 46.096" N
211	P-211	81° 14' 39.711" E	23° 17' 45.822" N
212	P-212	81° 14' 43.566" E	23° 17' 45.547" N
213	P-213	81° 14' 47.687" E	23° 17' 45.269" N
214	P-214	81° 14' 51.807" E	23° 17' 44.991" N
215	P-215	81° 14' 55.928" E	23° 17' 44.713" N
216	P-216	81° 15' 0.049" E	23° 17' 44.435" N
217	P-217	81° 15' 3.567" E	23° 17' 44.711" N
218	P-218	81° 15' 7.085" E	23° 17' 44.988" N
219	P-219	81° 15' 10.603" E	23° 17' 45.264" N
220	P-220	81° 15' 14.122" E	23° 17' 45.540" N